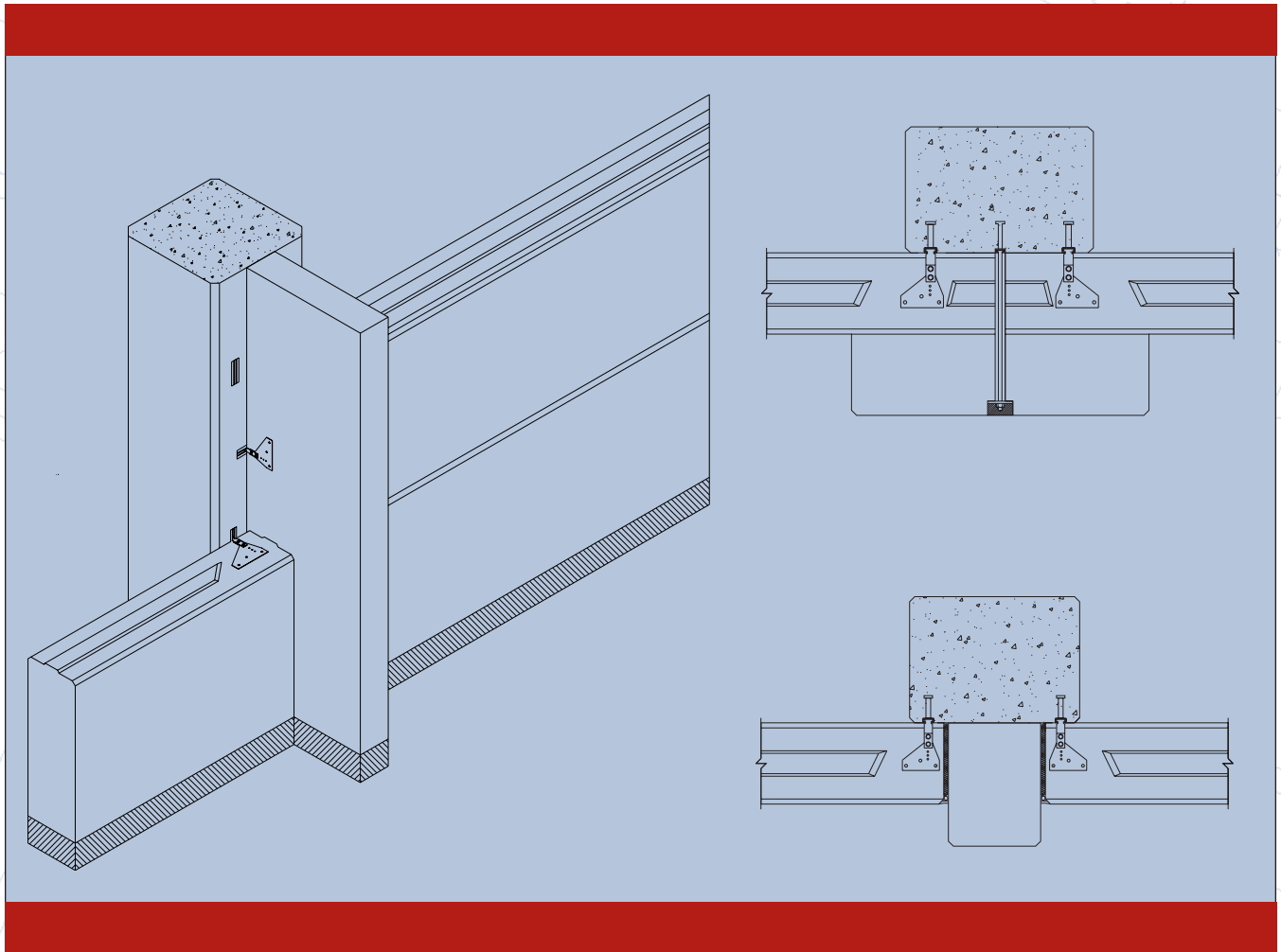


# IX. Construction Details



<b>A. Floor and Roof Panels</b>	<b>Page IX-3</b>
<b>B. Non-Load Bearing Wall Panels / Wall Panel Connections</b>	<b>Page IX-12</b>
<b>C. Load Bearing Vertical Wall Panels</b>	<b>Page IX-34</b>
<b>D. Blocks and Lintels</b>	<b>Page IX-39</b>
<b>E. Interior Wall Partitions</b>	<b>Page IX-47</b>
<b>F. Electrical / Plumbing Installation</b>	<b>Page IX-51</b>



# A. Floor and Roof Panels

## Floor and Roof Sections

Exterior Wall Section with AERCON Block

Interior Wall Section with AERCON Block

Sections with Concrete Beam

Sections with Steel Beam

Floor and Roof Panel Opening Details

## Architectural Details

Roof Drain, Parapet and Scupper Details

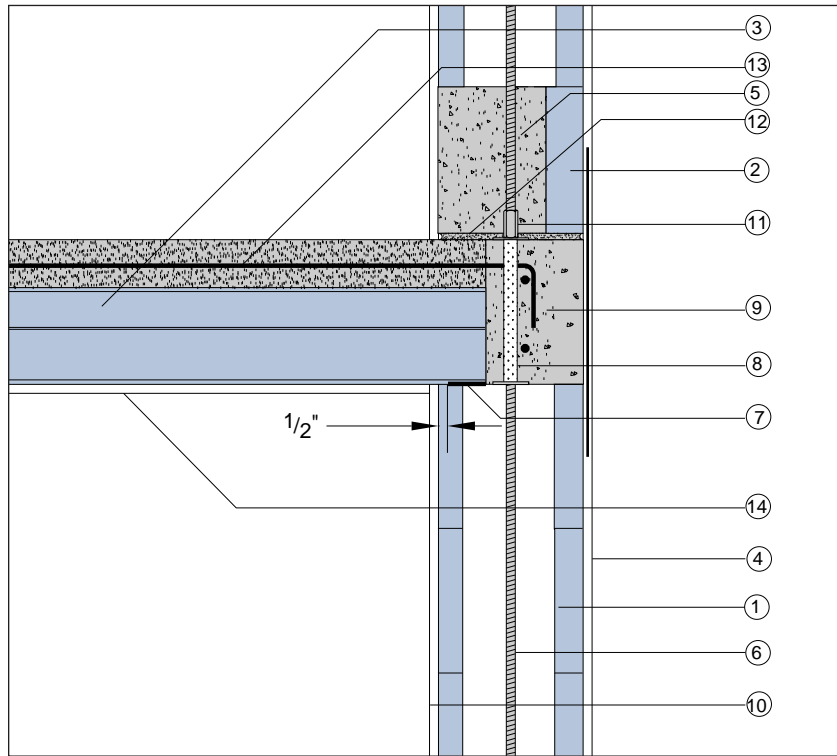
Skylight and Pipe Penetration Details

Ceiling and Mechanical Details

# AERCON Floor/Roof Panels

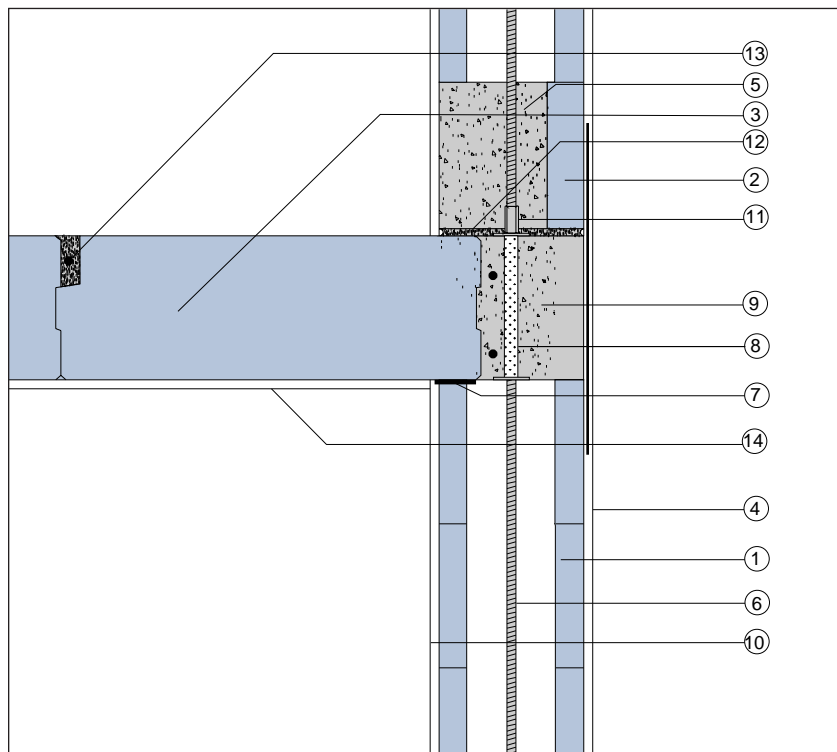
- 1 Cored AERCON Block
- 2 AERCON Clean-Out Block
- 3 AERCON Floor/Roof Panel
- 4 AERCON Compatible Coating w/Mesh at Discontinuities
- 5 Fill Clean-Out Block Opening with AERCON Repair Mortar

Exterior Wall Section

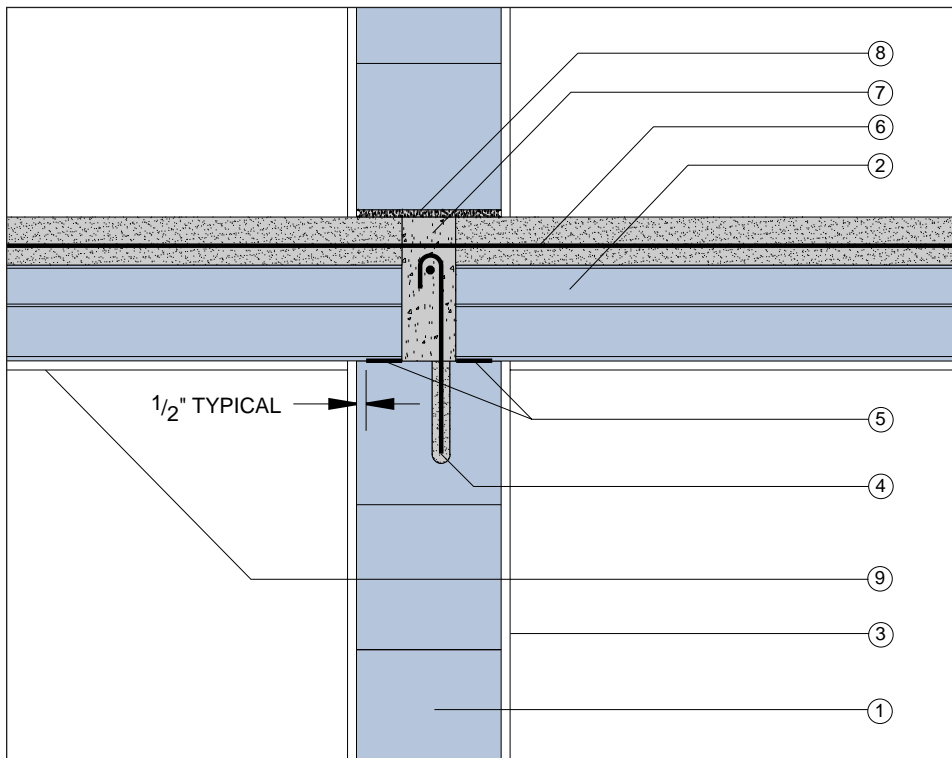


- 6 Threaded Tie-Down Rod
- 7 2 Layers of Felt Paper
- 8 Sleeve w/Cover Plate Top & Bottom
- 9 Bond Beam w/Reinforcing Bars
- 10 AERCON Interior Wall Plaster or Gypsum Board
- 11 Threaded Coupler
- 12 3/8"± Mortar Bed
- 13 Reinforcing Bar in Grout Filled Key Joint
- 14 Gypsum Board

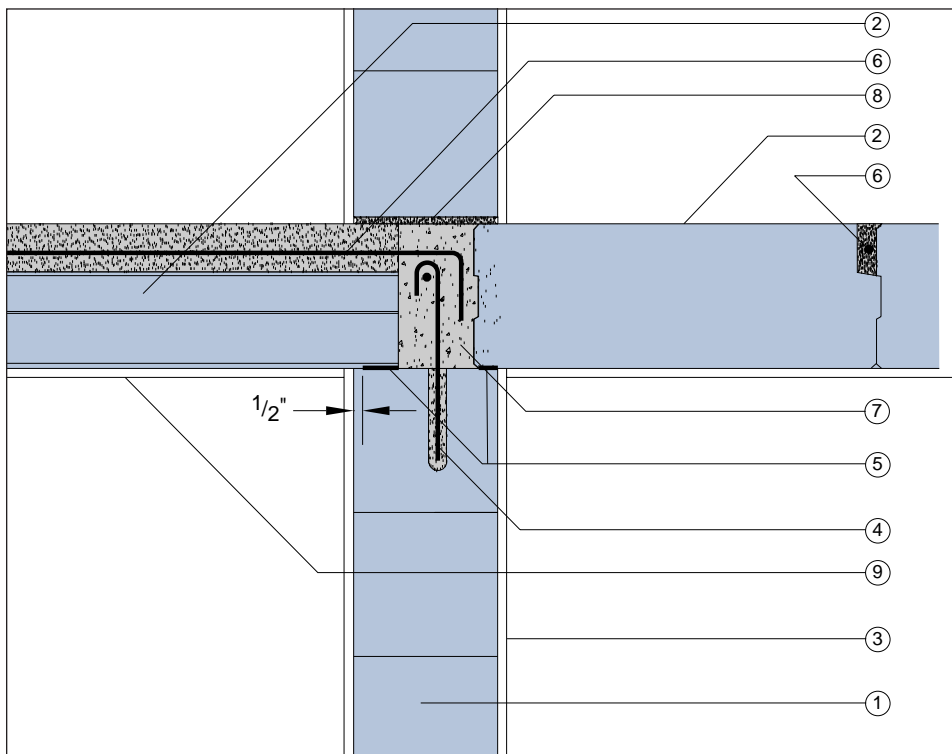
Exterior Wall Section



Interior Wall Section



Interior Wall Section



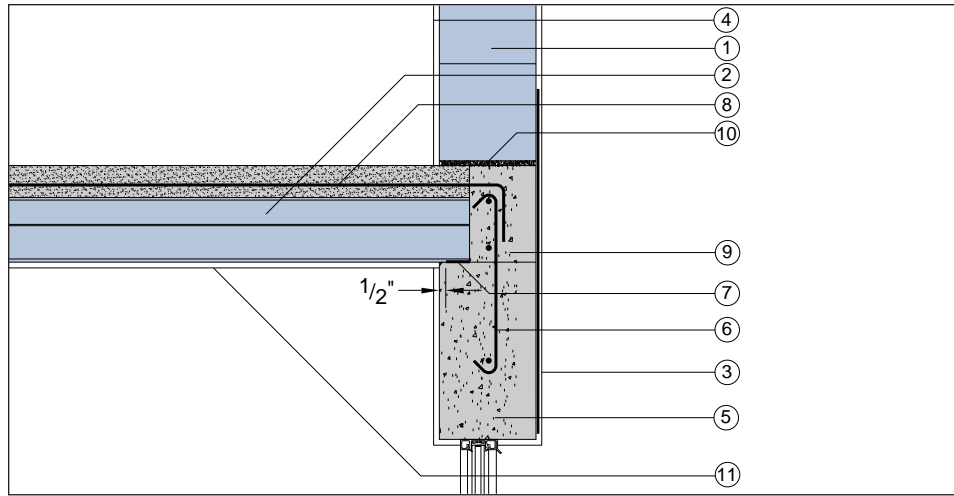
## AERCON Floor/Roof Panels

- ① AERCON Block
- ② AERCON Floor/Roof Panel
- ③ AERCON Interior Wall Plaster or Gypsum Board
- ④ Dowel
- ⑤ 2 Layers of Felt Paper
- ⑥ Reinforcing Bar in Grout Filled Key Joint
- ⑦ Bond Beam w/Reinforcing Bar
- ⑧ 3/8" ± Mortar Bed
- ⑨ Gypsum Board

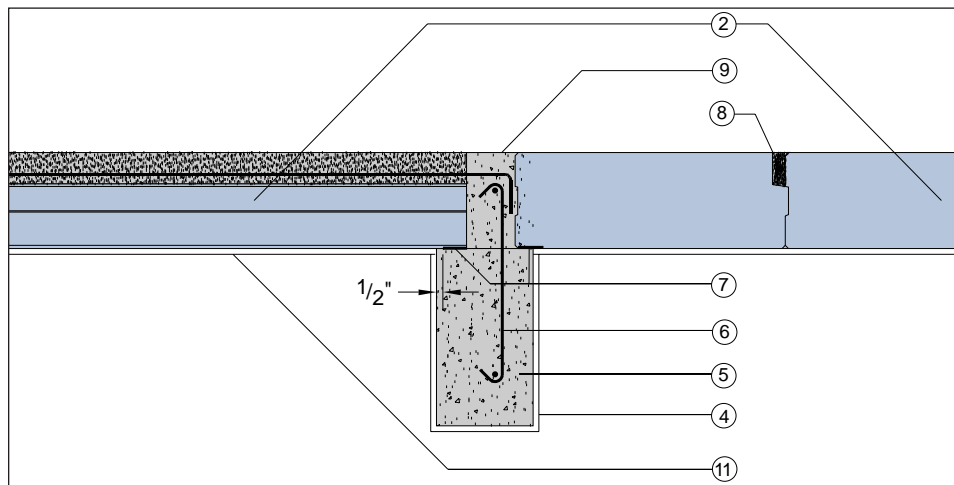
# AERCON Floor/Roof Panels

- 1** AERCON Block
- 2** AERCON Floor/Roof Panel
- 3** AERCON Compatible Coating w/Mesh at Discontinuities
- 4** AERCON Interior Wall Plaster or Gypsum Board
- 5** Concrete Beam
- 6** Dowel as Required
- 7** 2 Layers of Felt Paper
- 8** Reinforcing Bar in Grout Filled Key Joint
- 9** Bond Beam w/Reinforcing Bars
- 10** 3/8" ± Mortar Bed
- 11** Gypsum Board

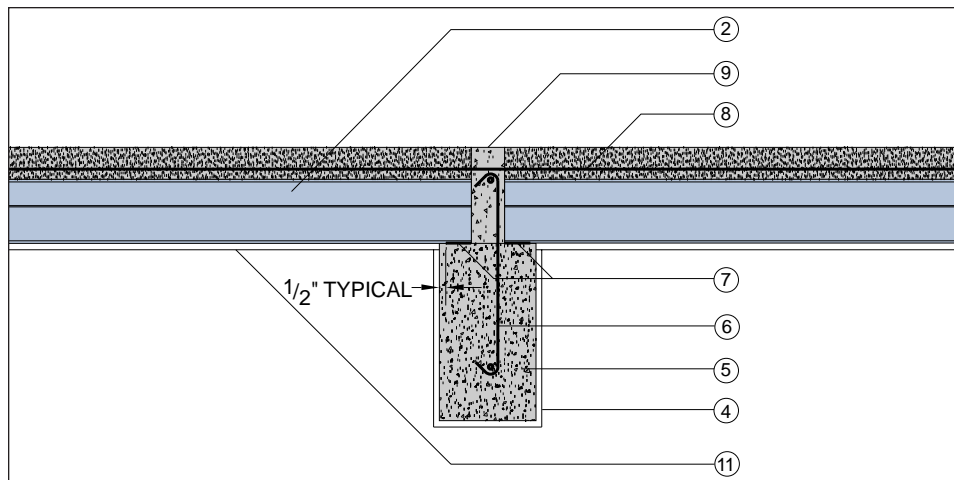
**Perimeter Concrete Beam Section**



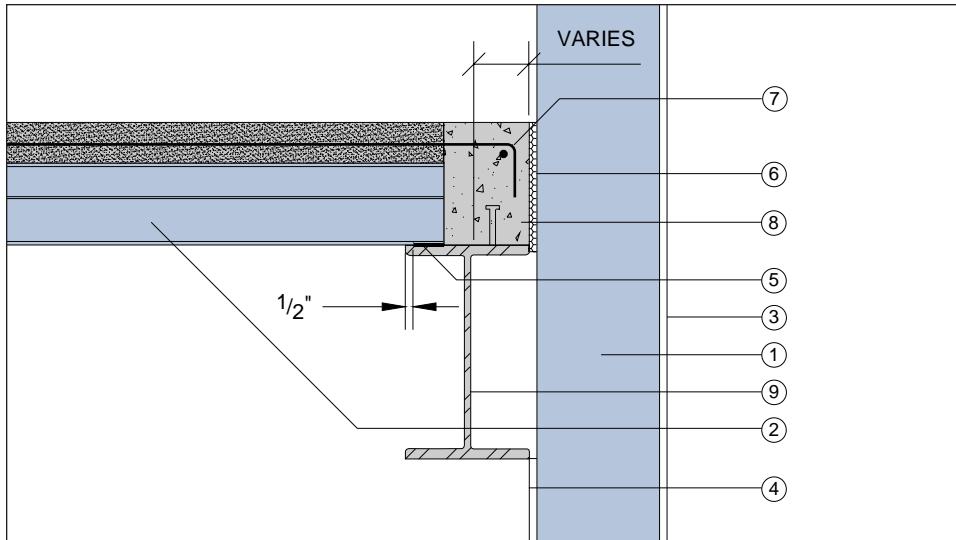
**Interior Concrete Beam Section**



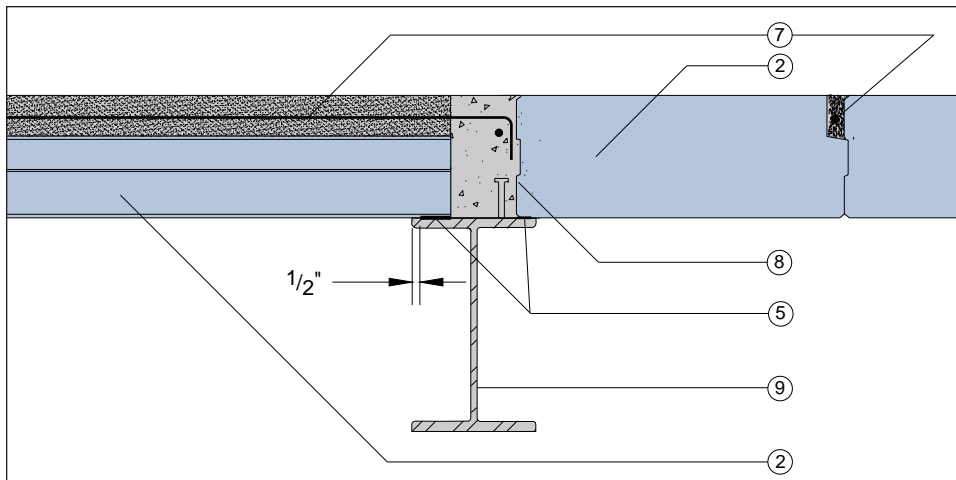
**Interior Concrete Beam Section**



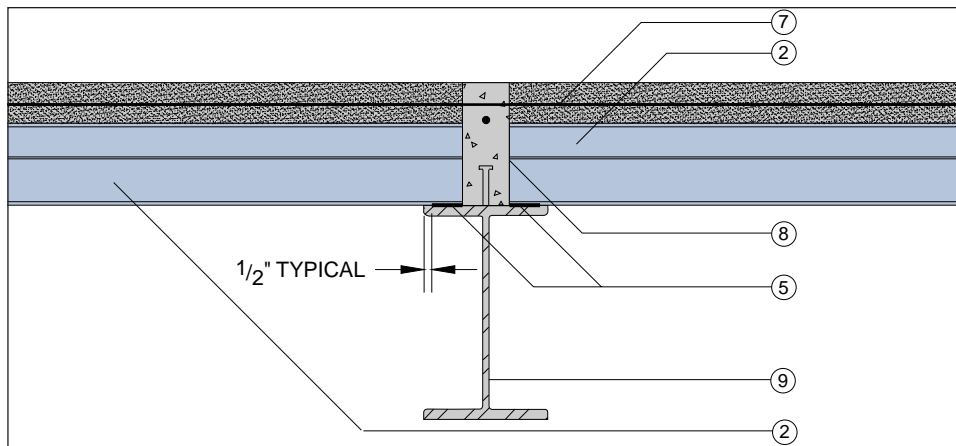
Perimeter Steel Beam Section



Interior Steel Beam Section



Interior Steel Beam Section



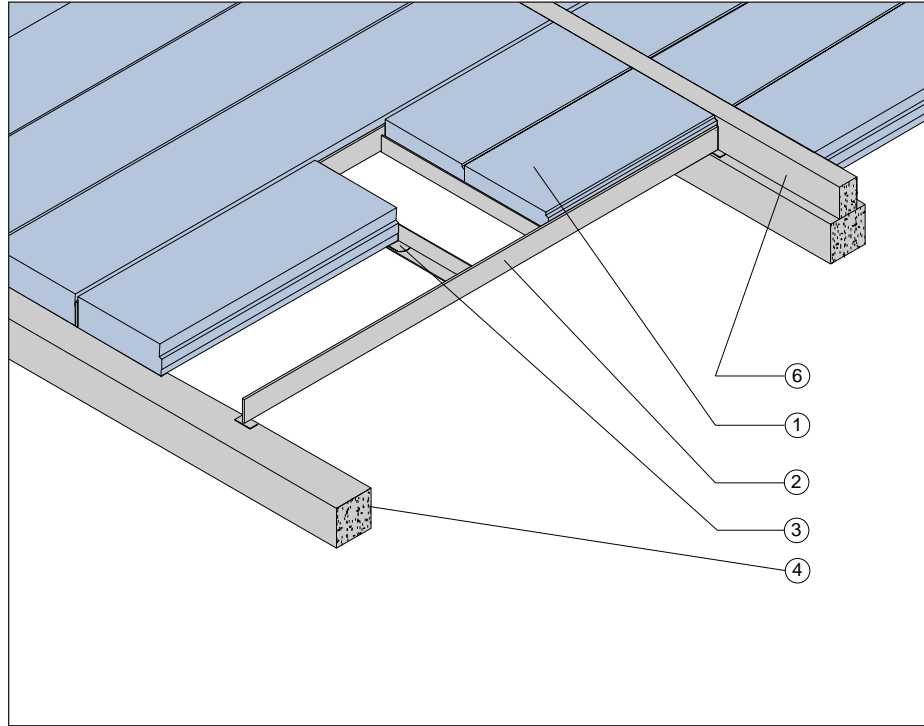
## AERCON Floor/Roof Panels

- 1 AERCON Block or Wall Panel
- 2 AERCON Floor/Roof Panel
- 3 AERCON Compatible Coating
- 4 AERCON Interior Wall Plaster or Gypsum Board
- 5 2 Layers of Felt Paper
- 6 Polystyrene
- 7 Reinforcing Bar in Grout Filled Key Joint
- 8 Bond Beam w/Reinforcing Bars
- 9 Steel Beam w/Shear Studs

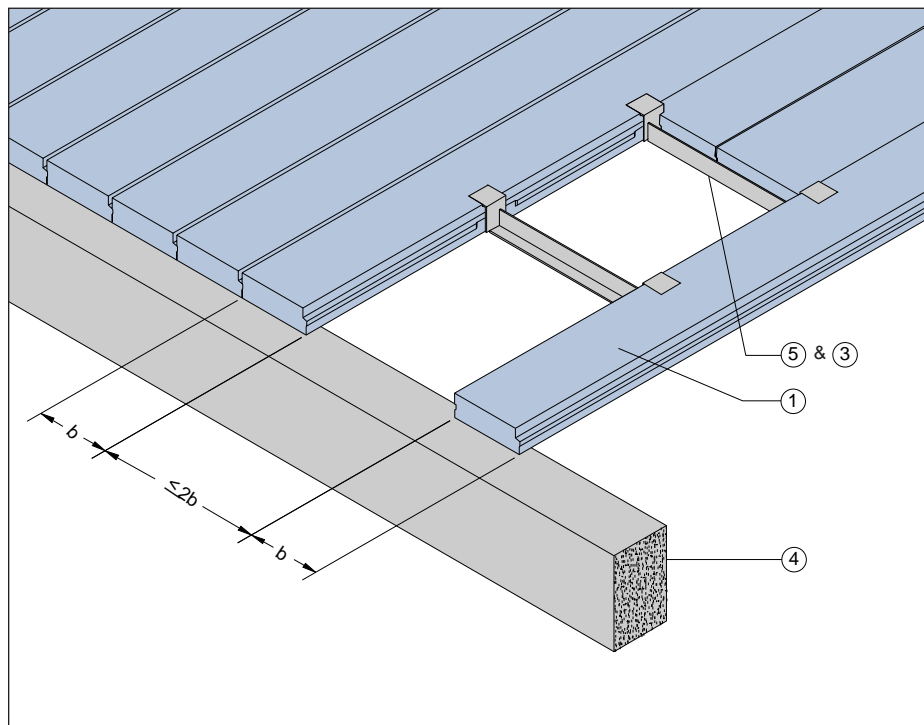
# AERCON Floor/Roof Panels

- 1 AERCON Floor/Roof Panel
- 2 Steel Support Frames
- 3 2 Layers of Felt Paper
- 4 Concrete Beam
- 5 Steel Header
- 6 Bond Beam

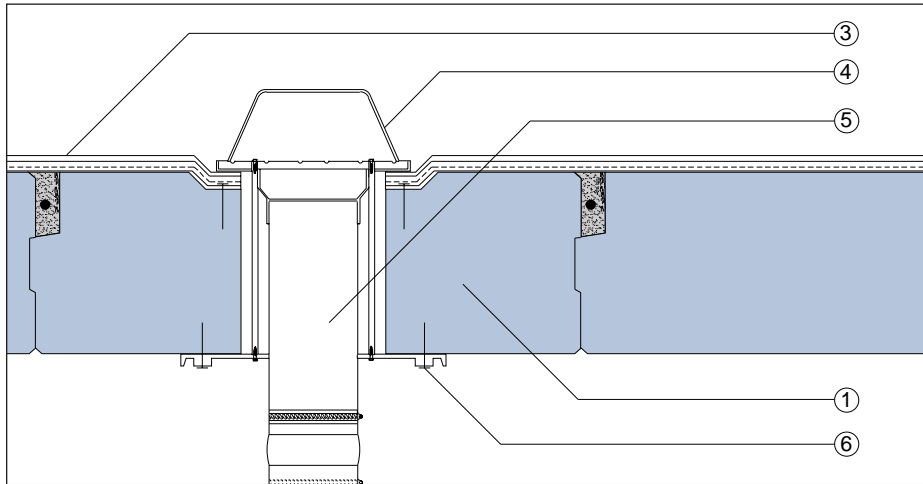
Opening Detail with Steel Support Frame



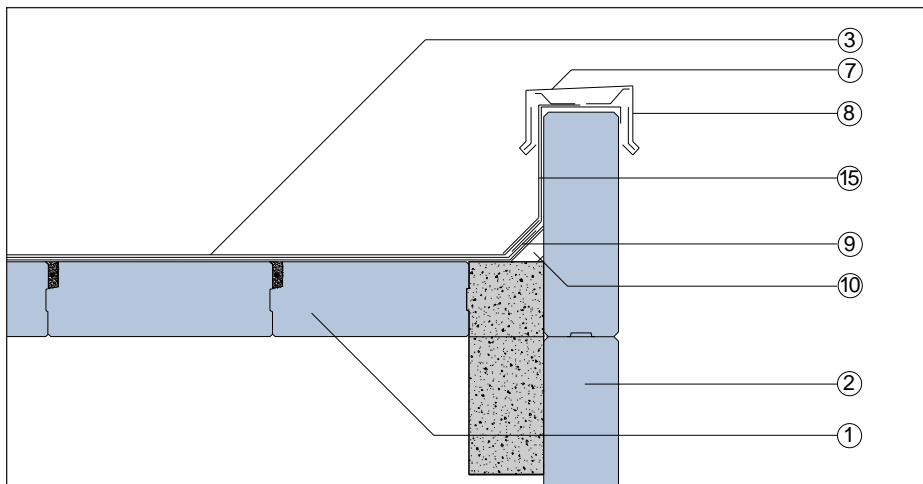
Opening Detail with Steel Headers



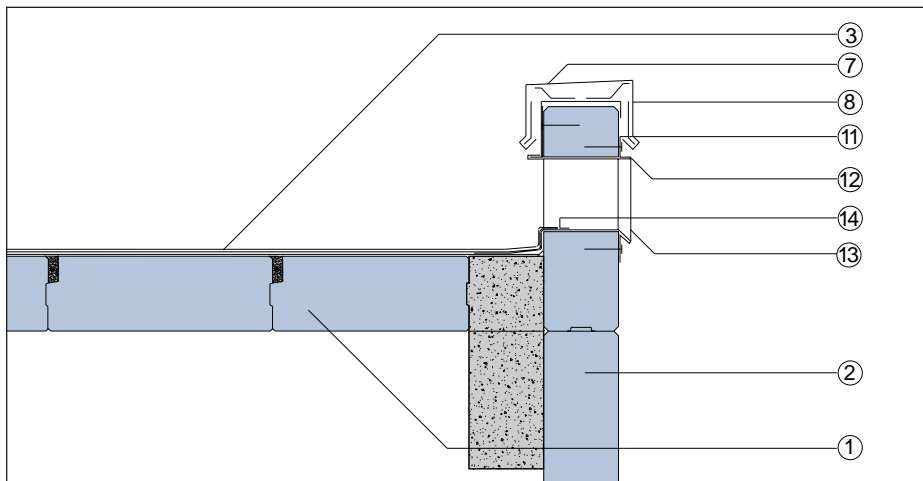
Roof Drain Detail



Parapet Detail



Emergency Overflow Scupper Detail



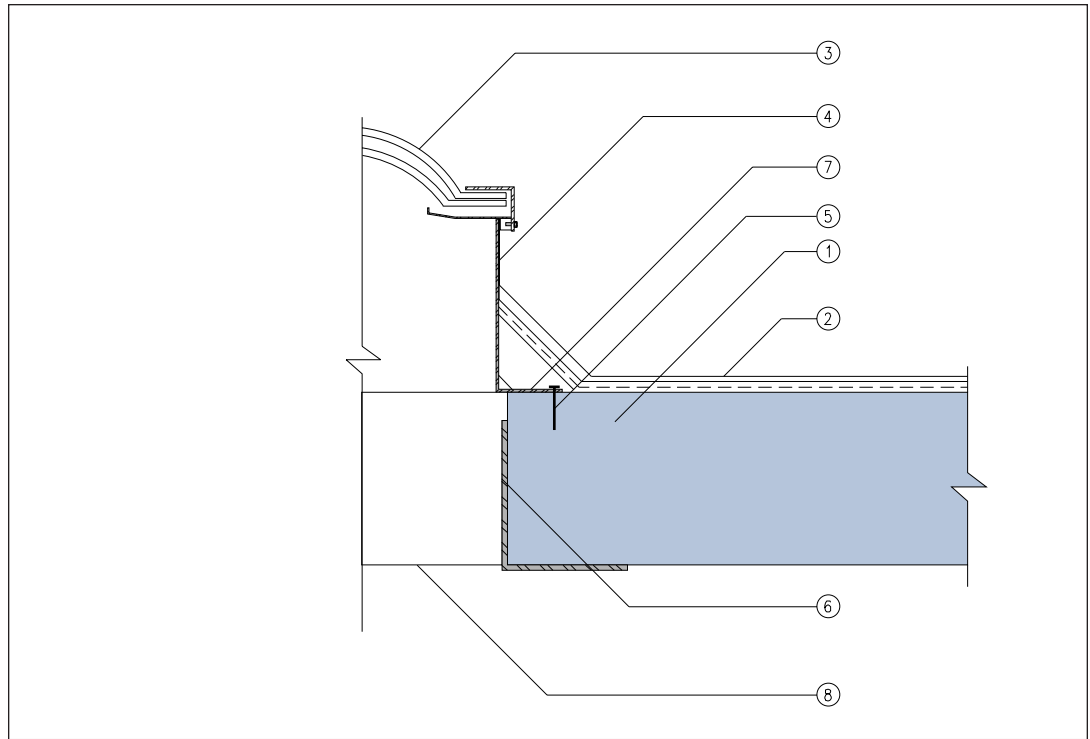
## AERCON Architectural Details

- ① AERCON Roof Panel
- ② AERCON Wall Panel
- ③ Single Ply or Built-Up Roofing
- ④ Drain Cap-Dome Strainer & Roof Drain
- ⑤ PVC Connector
- ⑥ Fastener
- ⑦ Metal Coping With Continuous Cleats Each Side
- ⑧ Parapet Flashing
- ⑨ Aluminum Clad Flashing Membrane
- ⑩ Fiber Cant
- ⑪ Elastomeric Sealant Continuous
- ⑫ Aluminum Anchorage Collar Soldered to Scupper – Both Sides
- ⑬ Aluminum Thru-Wall Scupper
- ⑭ Gravel Stop
- ⑮ Parapet Flashing Shall Be Torched on. Base Ply Parapet Flashing to Continue Over Top of Parapet

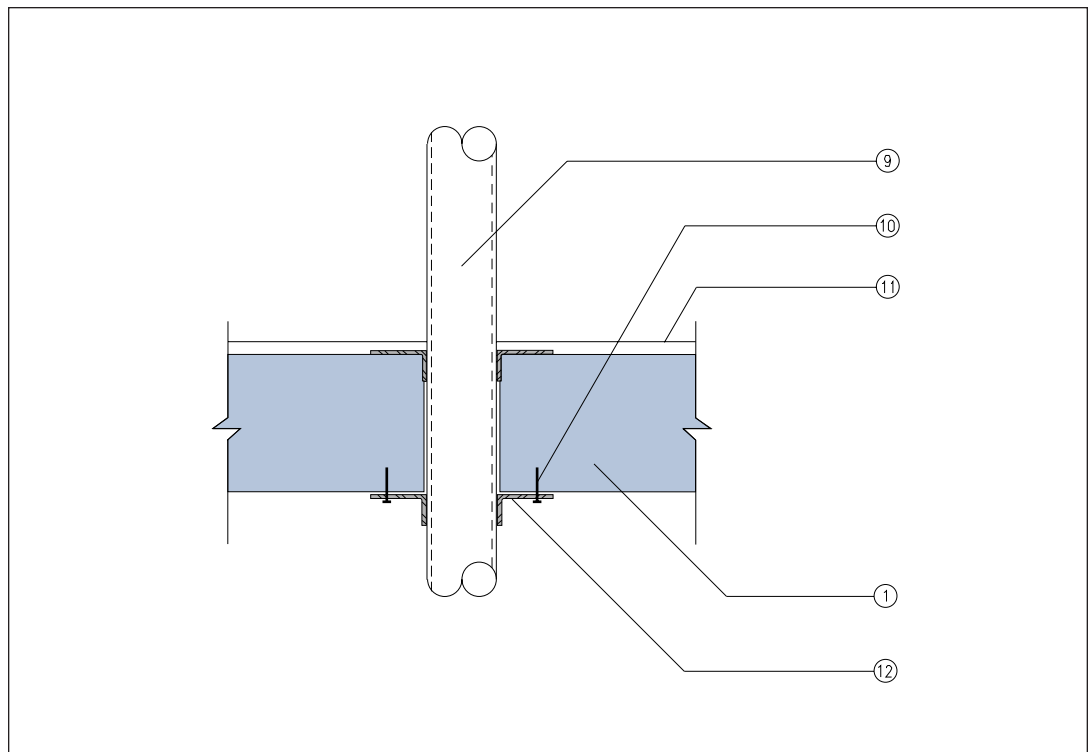
# AERCON Architectural Details

- 1** AERCON Floor/Roof Panel
- 2** Single Ply or Built-Up Roofing
- 3** Skylight
- 4** Skylight Frame
- 5** Skylight Fastener
- 6** Steel Header
- 7** Mounting Flange
- 8** AERCON Roof Panel Beyond
- 9** Pipe
- 10** Fastener
- 11** Floor/Roof System
- 12** Trim Collar

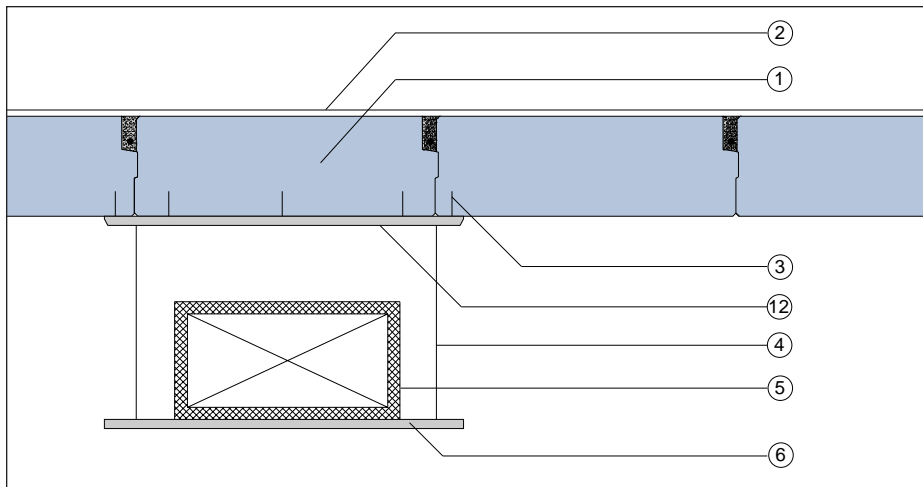
Skylight Detail



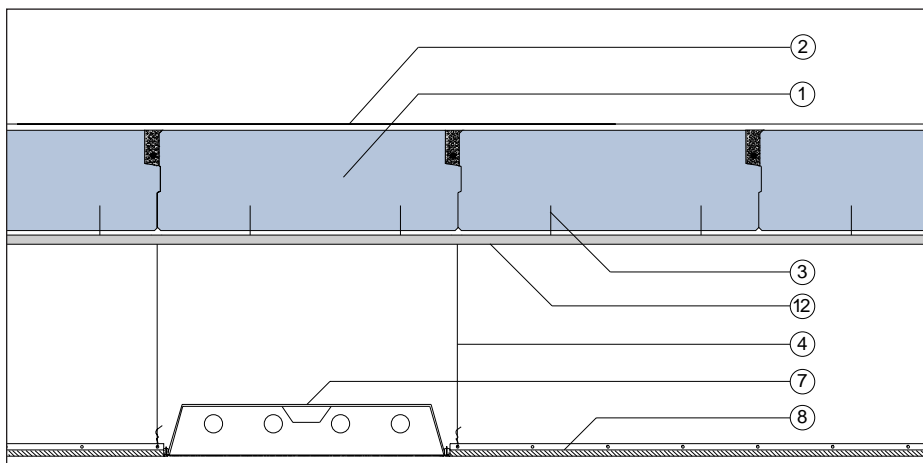
Pipe Penetration Detail



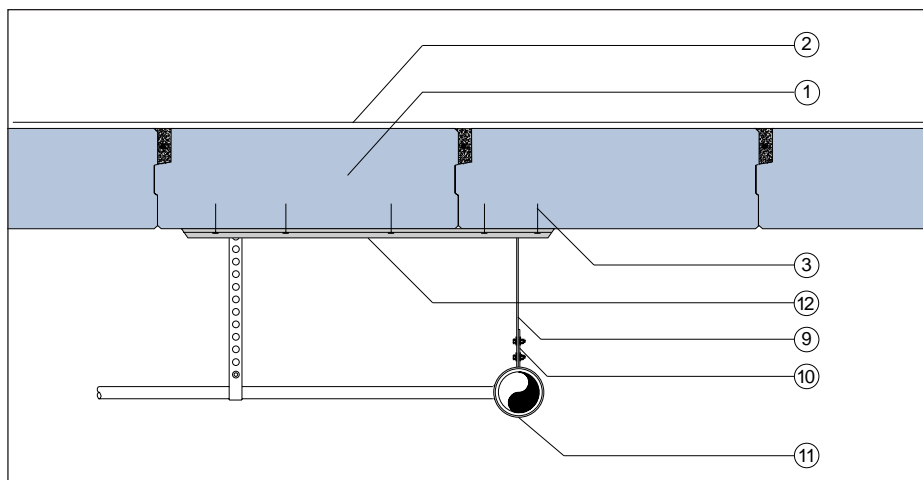
## Suspended Ductwork Detail



## Suspended Acoustical Tile Ceiling Detail



## Suspended Plumbing Detail



# AERCON

## Architectural

### Details

- 1** AERCON Floor/Roof Panel
- 2** Floor/Roof System
- 3** Fastener
- 4** Hanger Wire
- 5** Ductwork
- 6** Channel Support
- 7** Recessed Light Fixture Unit
- 8** Suspended Ceiling
- 9** Pipe Support
- 10** Clevis or Strap Hanger
- 11** Header Pipe
- 12** Channel Fastened To Panel

# B. Non-Load Bearing Wall Panels / Wall Panel Connections

## Horizontal Non-Load Bearing Wall Panels

Interior Column Detail

Parapet Detail

Window Opening Detail

Door Opening Detail

Overhead Door Opening Detail

Corner Column Detail

Interior Column Detail with Channel Clamp

Corner Column Details

Architectural Window Opening Details

## Vertical Non-Load Bearing Wall Panels

Parapet Detail

Intermediate Beam and Window Opening Detail

Fire Wall Detail

## Foundation Details

Monolithic Slab

Monolithic Slab with Concrete Curb

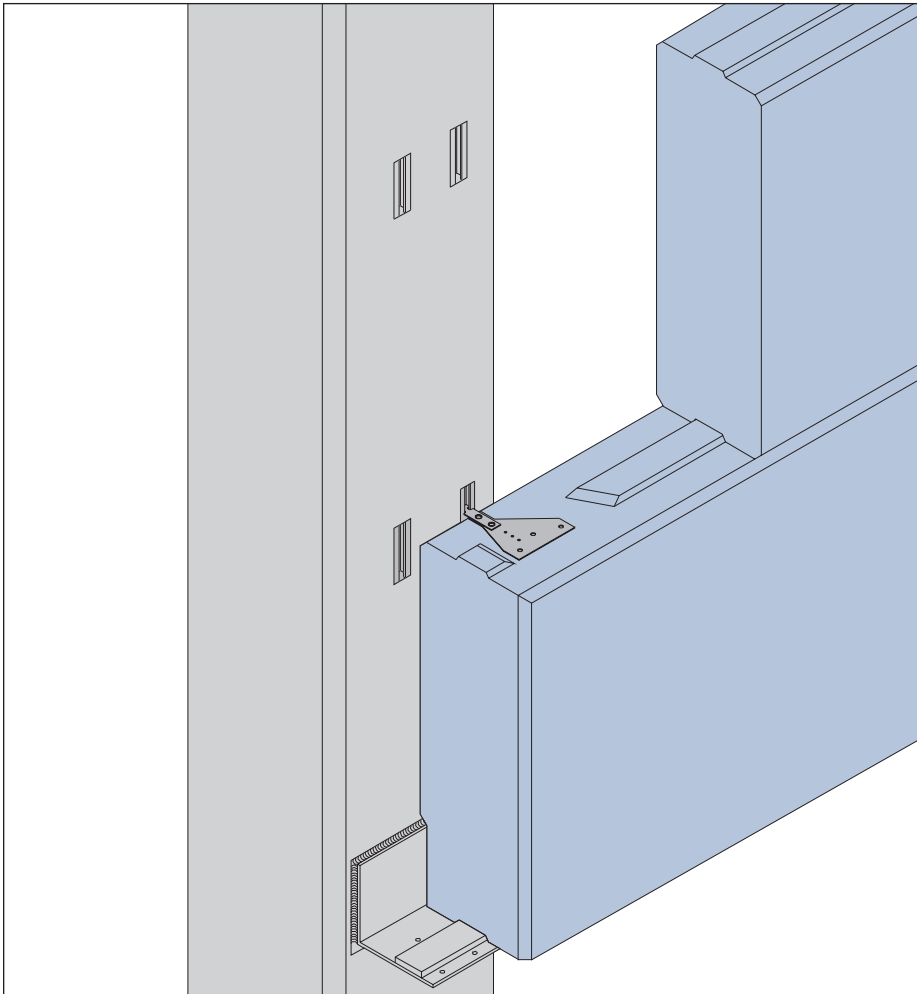
Stemwall

Stemwall with Concrete Curb

## Wall Panel Connections

Wall Plate Anchors

## Interior Column Detail



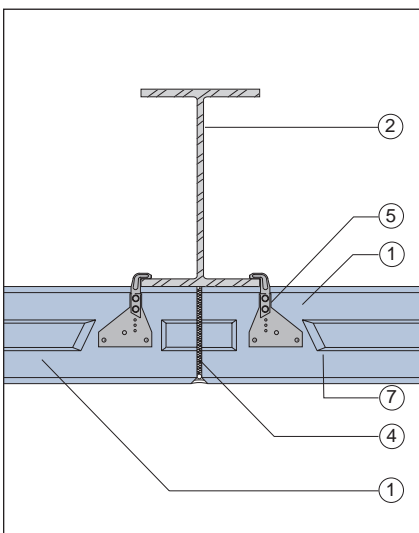
# AERCON

## Horizontal

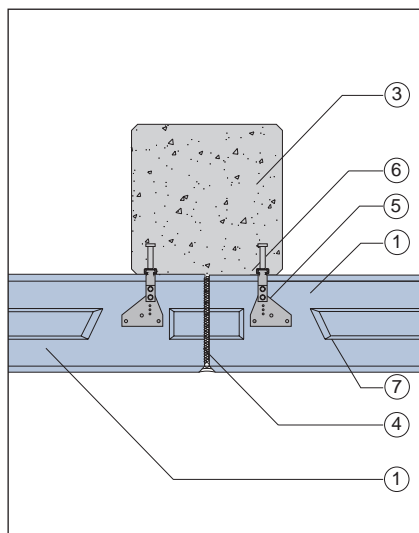
## Wall Panels

- 1 AERCON Horizontal Wall Panel
- 2 Steel Column
- 3 Concrete Column
- 4 Expansion Joint
- 5 Wall Plate Anchor
- 6 Anchor Rail Embedded in Concrete Column
- 7 Trim Tongue for Wall Plate Anchor Installation

## Steel Column Detail



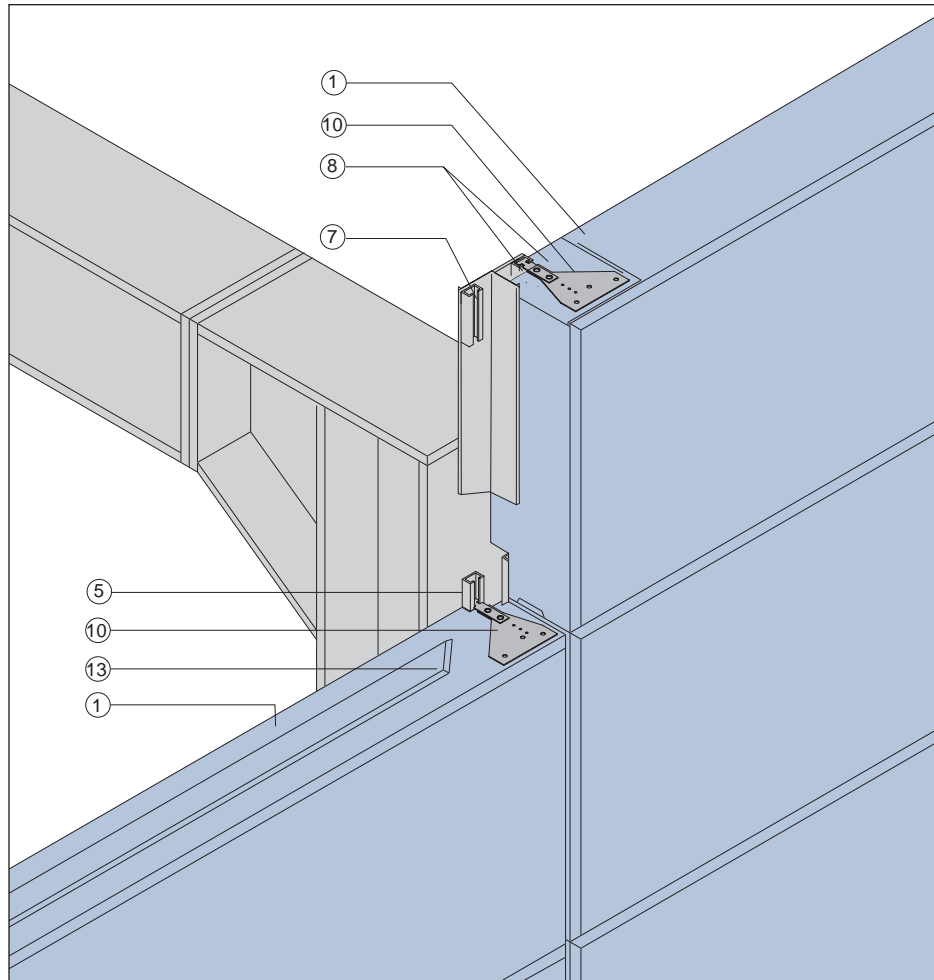
## Concrete Column Detail



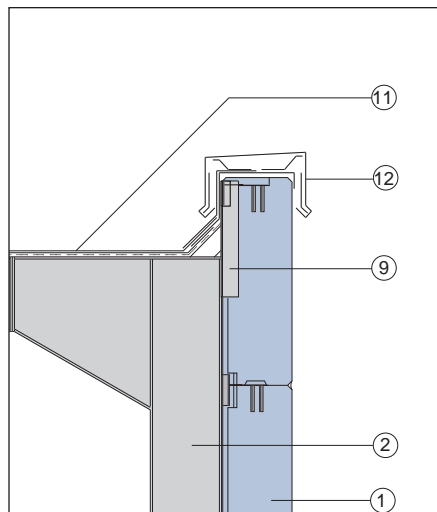
# AERCON Horizontal Wall Panels

- 1 AERCON Horizontal Wall Panel
- 2 Steel Column
- 3 Concrete Column
- 4 Steel "T" Section Welded to Embedded Steel Plate
- 5 Anchor Rail Welded to Steel Column
- 6 Anchor Rail Embedded in Concrete Column
- 7 Anchor Rail Welded to Steel "T" Section
- 8 Field Rout Wall Panel to Allow Installation of Anchor Rail and Wall Plate Anchor
- 9 Steel "T" Section Welded to Steel Column
- 10 Wall Plate Anchor
- 11 Single Ply or Built-Up Roof
- 12 Parapet Flashing
- 13 Trim Tongue for Wall Plate Anchor Installation

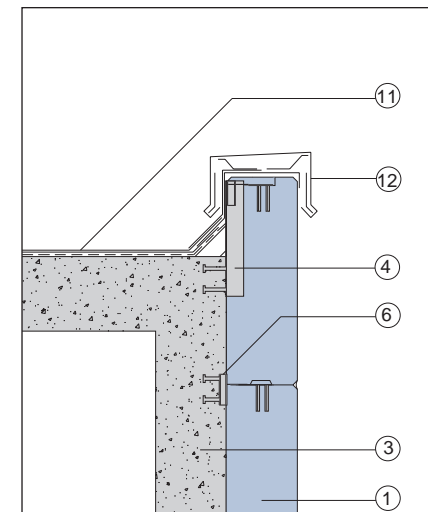
Parapet Detail



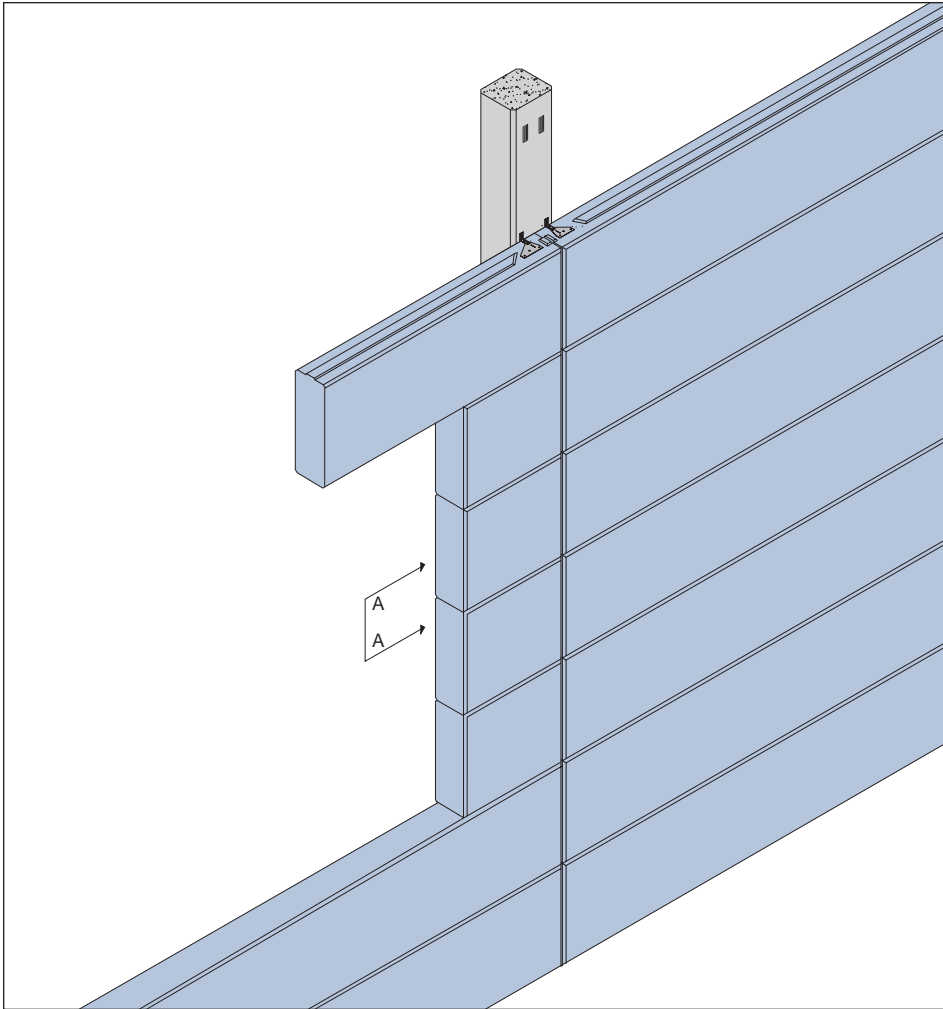
Parapet Detail at Steel Column



Parapet Detail at Concrete Column



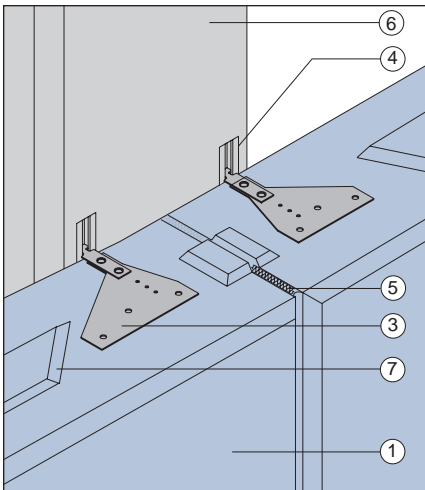
## Window Opening Detail



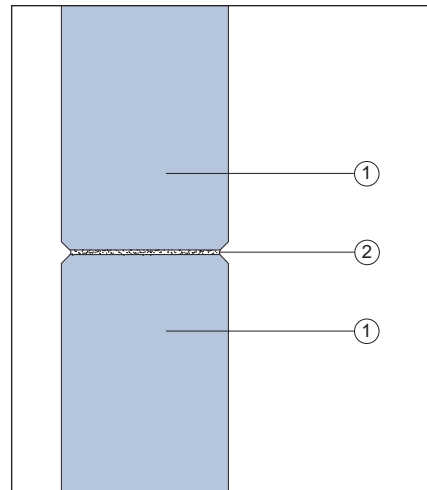
## AERCON Horizontal Wall Panels

- 1 AERCON Horizontal Wall Panel
- 2 AERCON Mortar
- 3 Wall Plate Anchor
- 4 Anchor Rail Embedded In Concrete Column
- 5 Expansion Joint
- 6 Concrete Column
- 7 Trim Tongue For Wall Plate Anchor Installation

## Wall Plate Anchor Detail



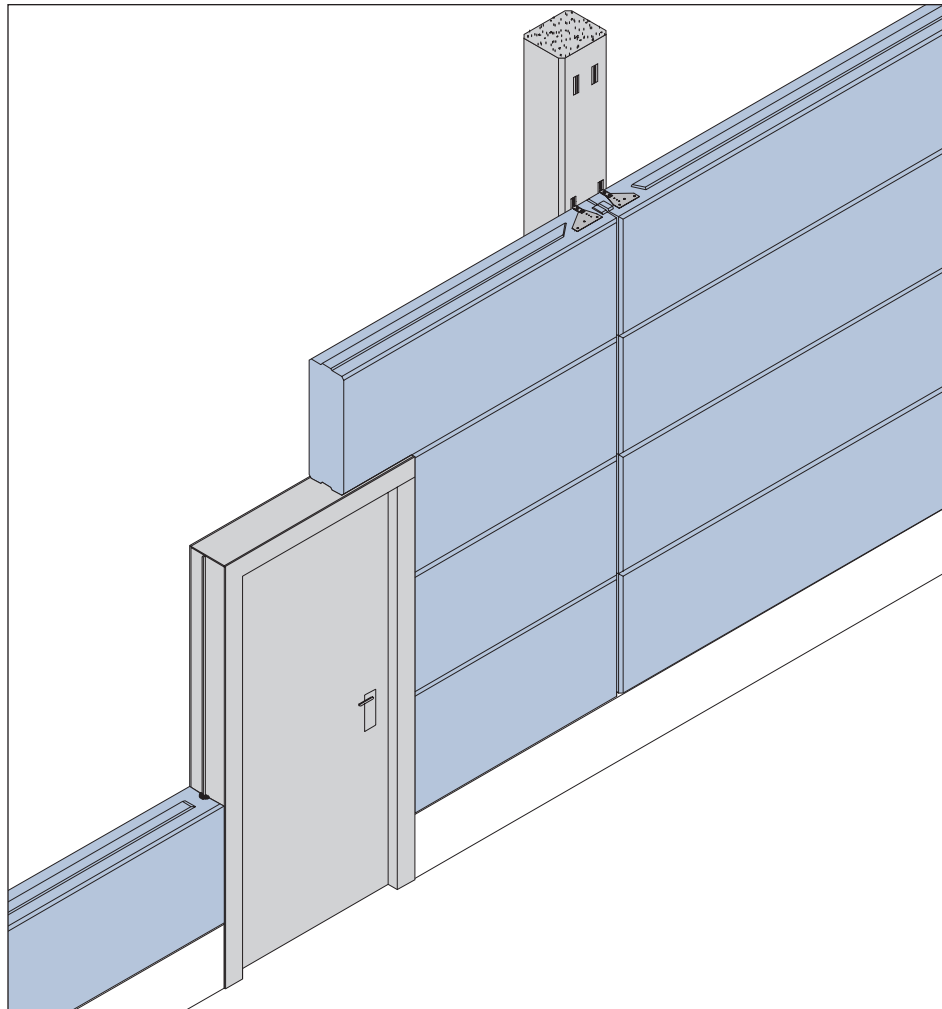
## Section A-A (Along Jamb Only)



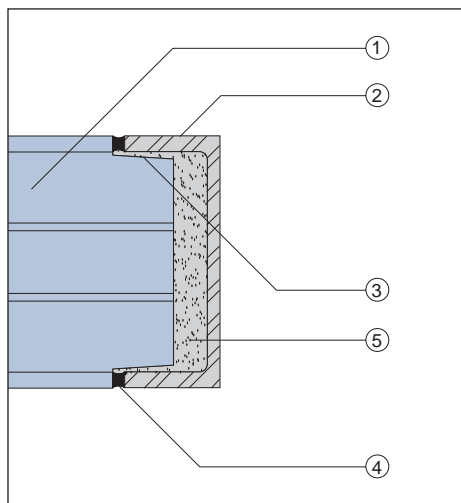
# AERCON Horizontal Wall Panels

- 1 AERCON Horizontal Wall Panel
- 2 Steel Frame
- 3 Field Rout As Required
- 4 Sealant Continuous. All Vertical and Horizontal Joints to be Sealed
- 5 Grout

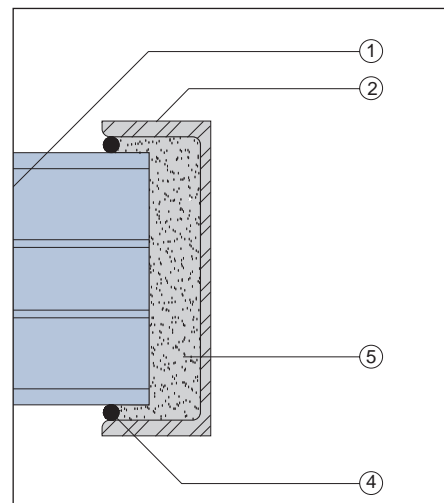
Door Opening Detail



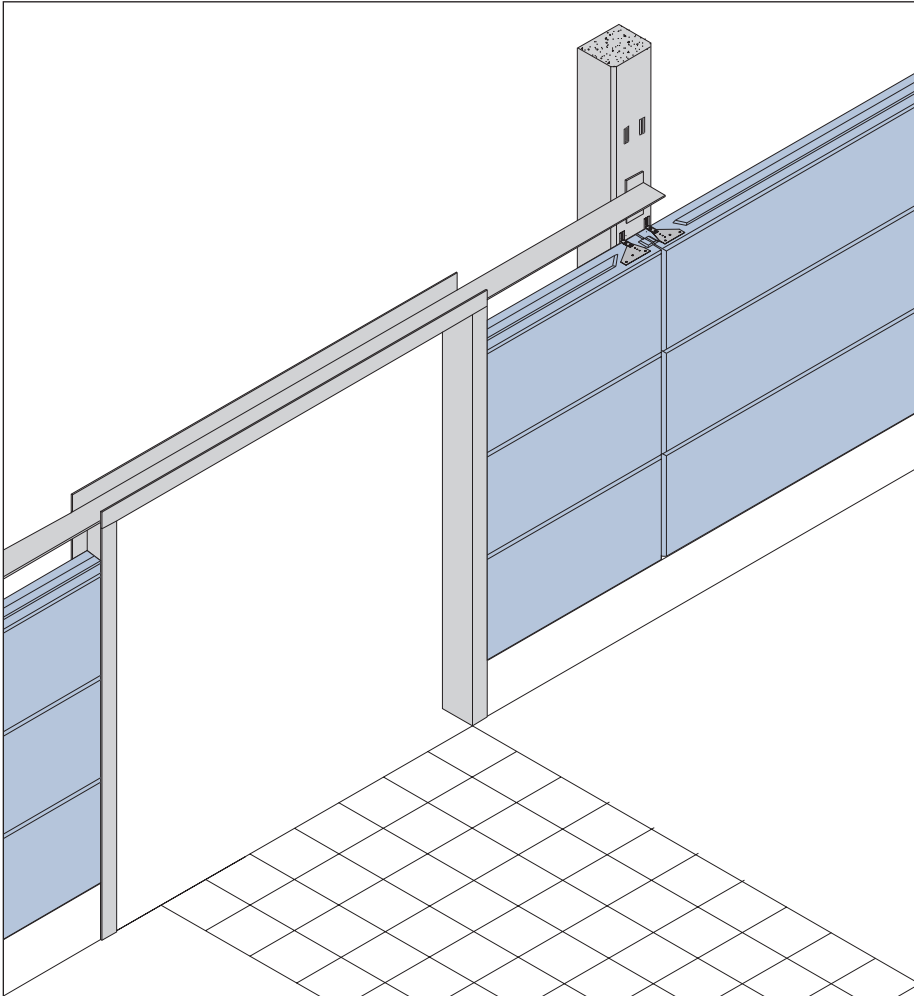
Jamb Detail



Jamb Detail



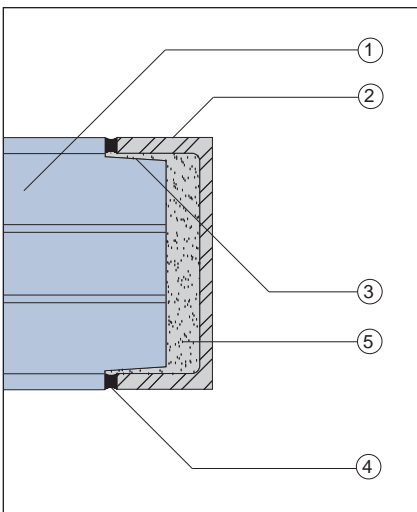
Overhead Door Opening Detail



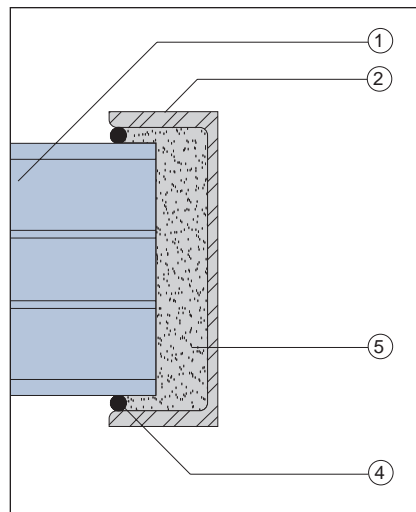
## AERCON Horizontal Wall Panels

- ① AERCON Horizontal Wall Panel
- ② Steel Frame
- ③ Field Rout As Required
- ④ Sealant Continuous. All Vertical and Horizontal Joints to be Sealed
- ⑤ Grout

Jamb Detail



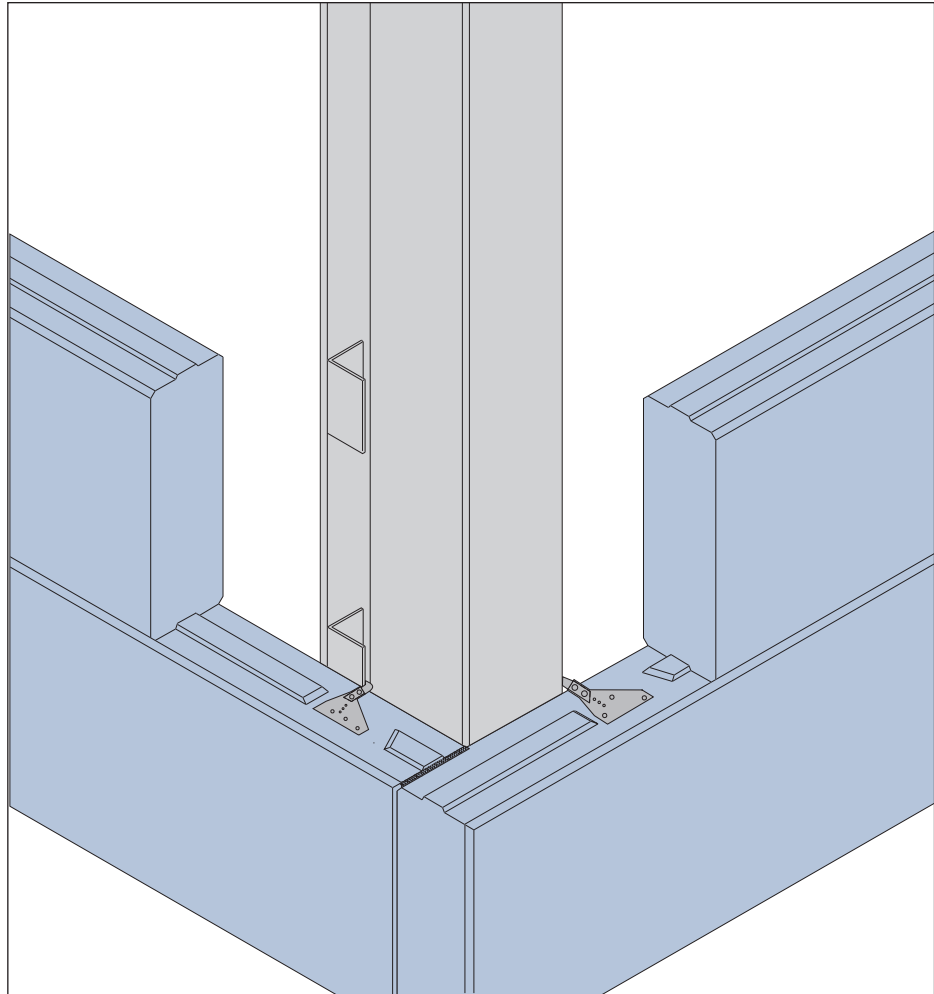
Jamb Detail



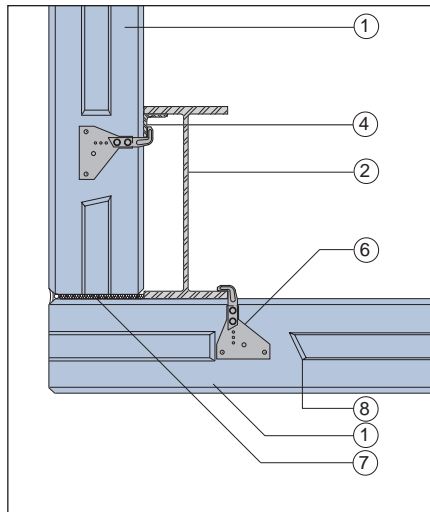
# AERCON Horizontal Wall Panels

- 1 AERCON Horizontal Wall Panel
- 2 Steel Column
- 3 Concrete Column
- 4 Steel Angle Attached to Column
- 5 Anchor Rail Embedded in Concrete Column
- 6 Wall Plate Anchor
- 7 Expansion Joint
- 8 Trim Tongue for Wall Plate Anchor Installation

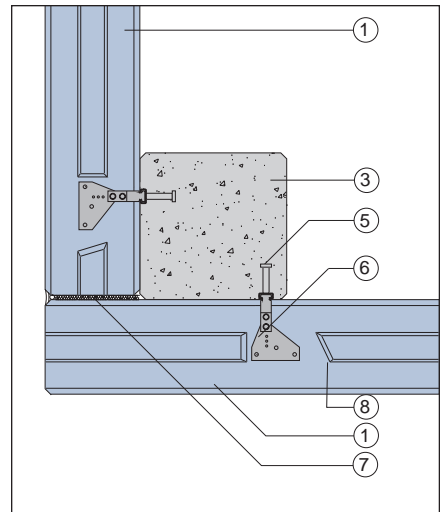
Corner Column Detail



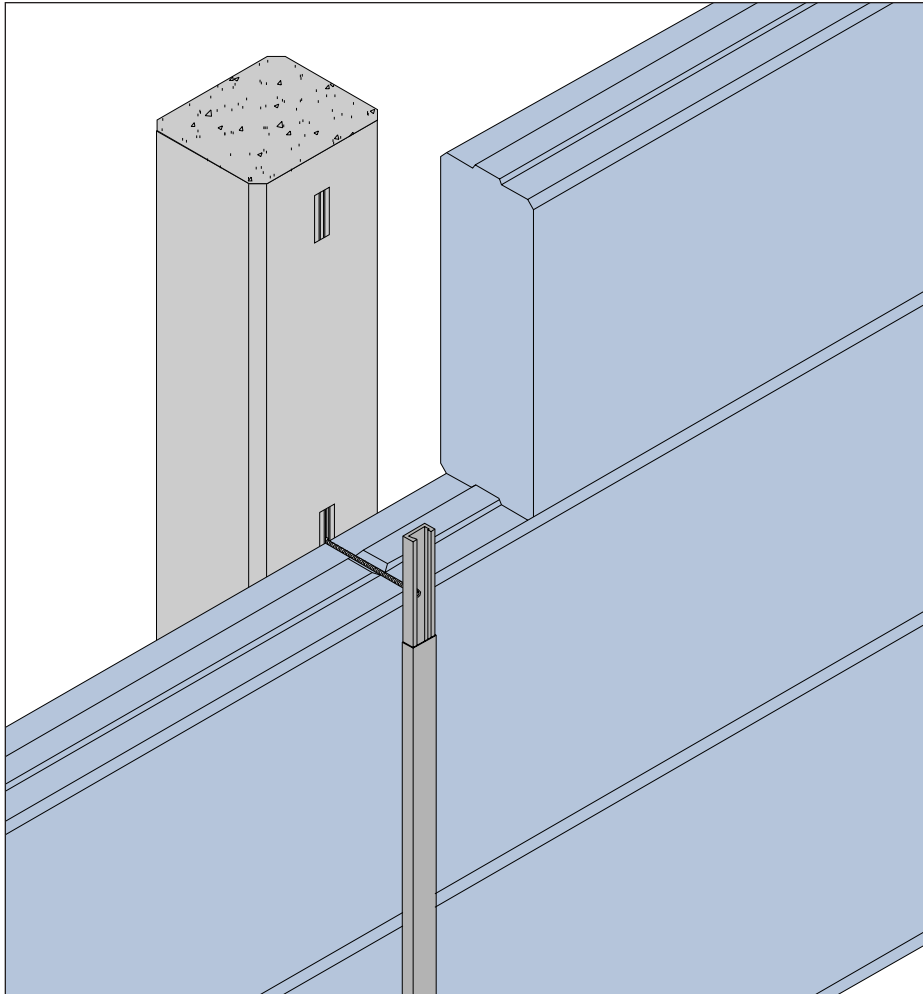
Steel Column Corner Detail



Concrete Column Corner Detail



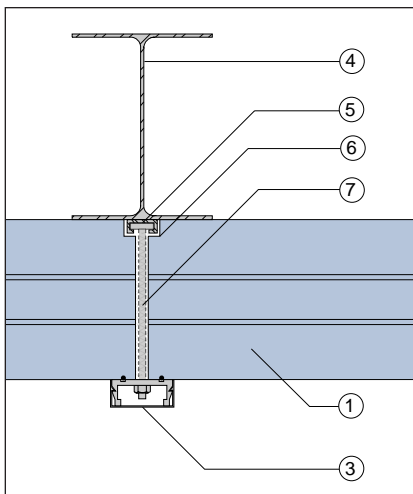
Interior Column Detail with Channel Clamp



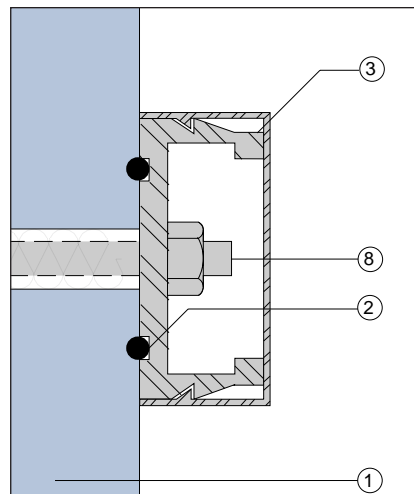
## AERCON Horizontal Wall Panels

- 1 AERCON Horizontal Wall Panel
- 2 Continuous Sealant
- 3 Aluminum Channel Clamp
- 4 Steel Column
- 5 Anchor Rail Welded to Steel Column
- 6 Field Rout Wall Panel For Anchor Rail
- 7 Expansion Joint
- 8 Threaded Rod

Steel Column Detail



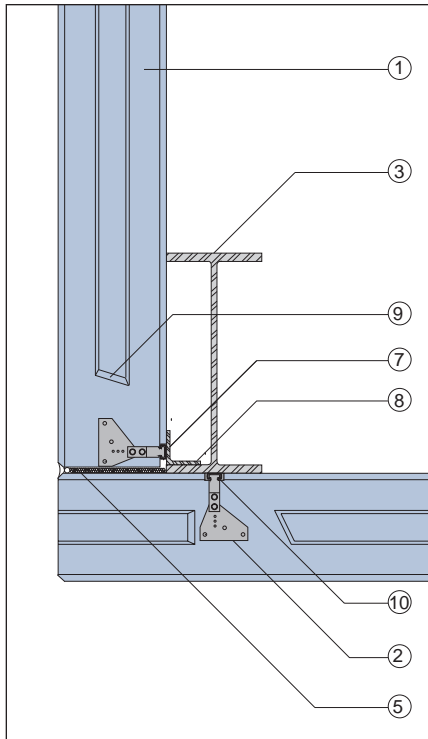
Channel Clamp Detail



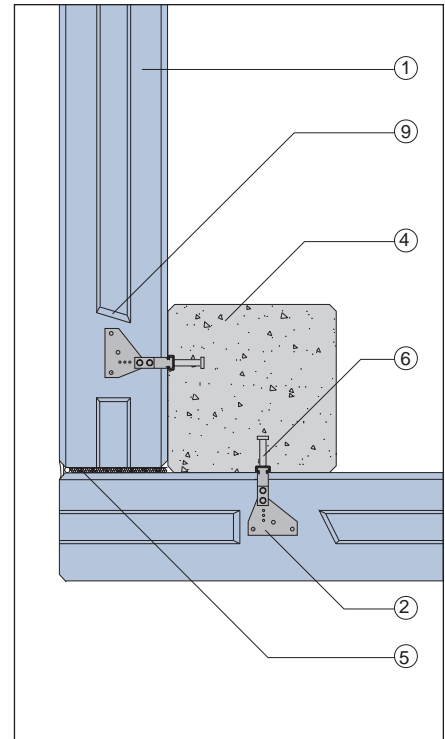
# AERCON Horizontal Wall Panels

- 1** AERCON Horizontal Wall Panel
- 2** Wall Plate Anchor
- 3** Steel Column
- 4** Concrete Column
- 5** Expansion Joint
- 6** Anchor Rail Embedded in Concrete Column
- 7** Anchor Rail Welded to Steel Angle
- 8** Steel Angle Welded to Steel Column
- 9** Trim Tongue for Wall Plate Anchor Installation
- 10** Anchor Rail Welded to Steel Column
- 11** Strap Anchor
- 12** AERCON Corner Panel
- 13** Powder Actuated Fasteners
- 14** Concrete Fasteners

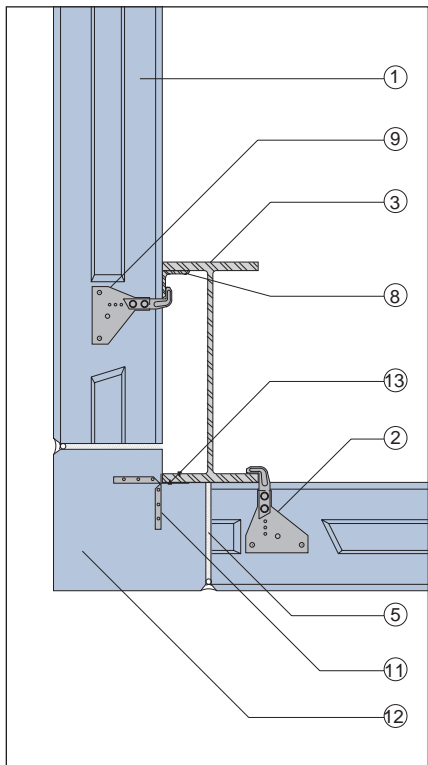
**Corner Column Details  
Corner Butt Detail**



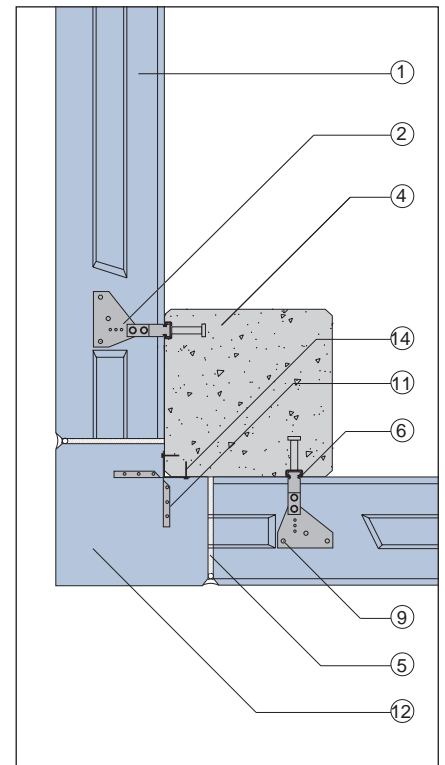
**Corner Butt Detail**



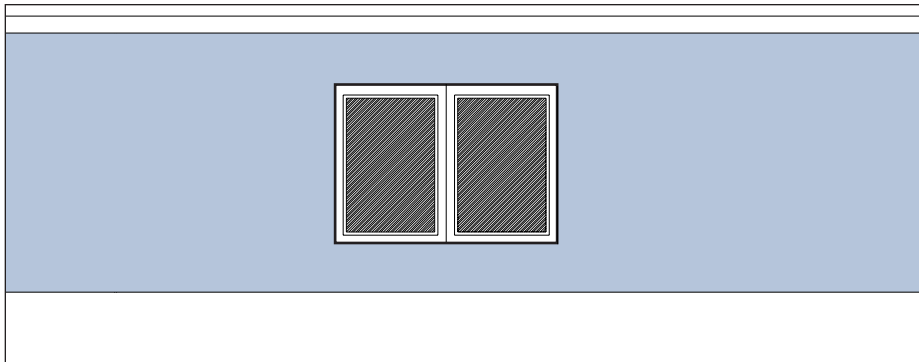
**Corner Block Detail**



**Corner Block Detail**



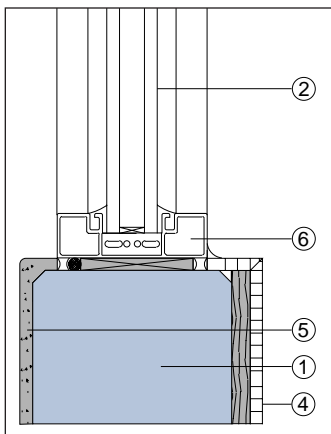
Architectural Window Opening Details



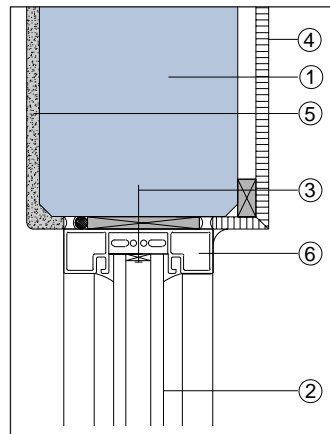
# AERCON Architectural Details

- 1 AERCON Wall Panel
- 2 Glazing
- 3 Fastener
- 4 Gypsum Board
- 5 AERCON Compatible Coating
- 6 Hollow Metal Frame
- 7 Masonry Anchor - Coordinate Location With Panel Joints
- 8 Grout Filled Hollow Metal Wrap Around Frame

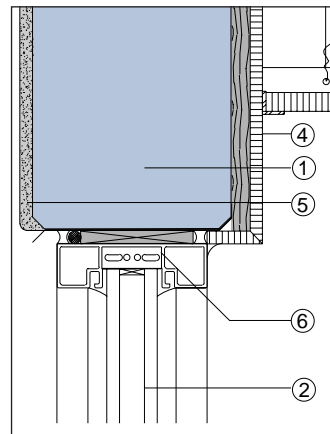
Sill Detail



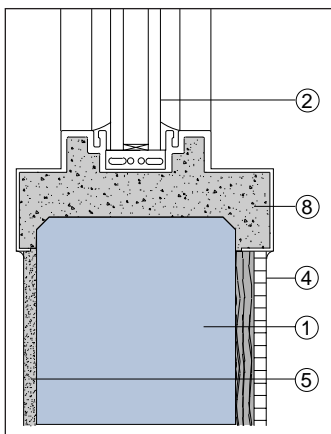
Jamb Detail



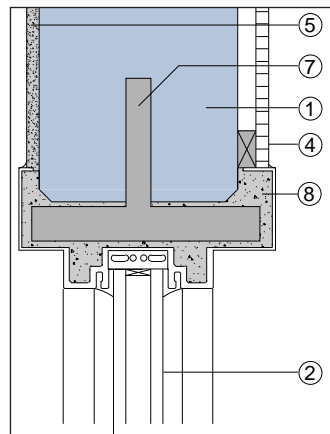
Head Detail



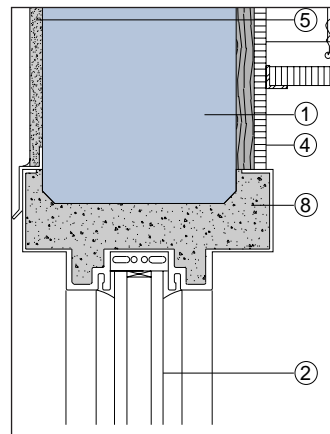
Sill Detail



Jamb Detail



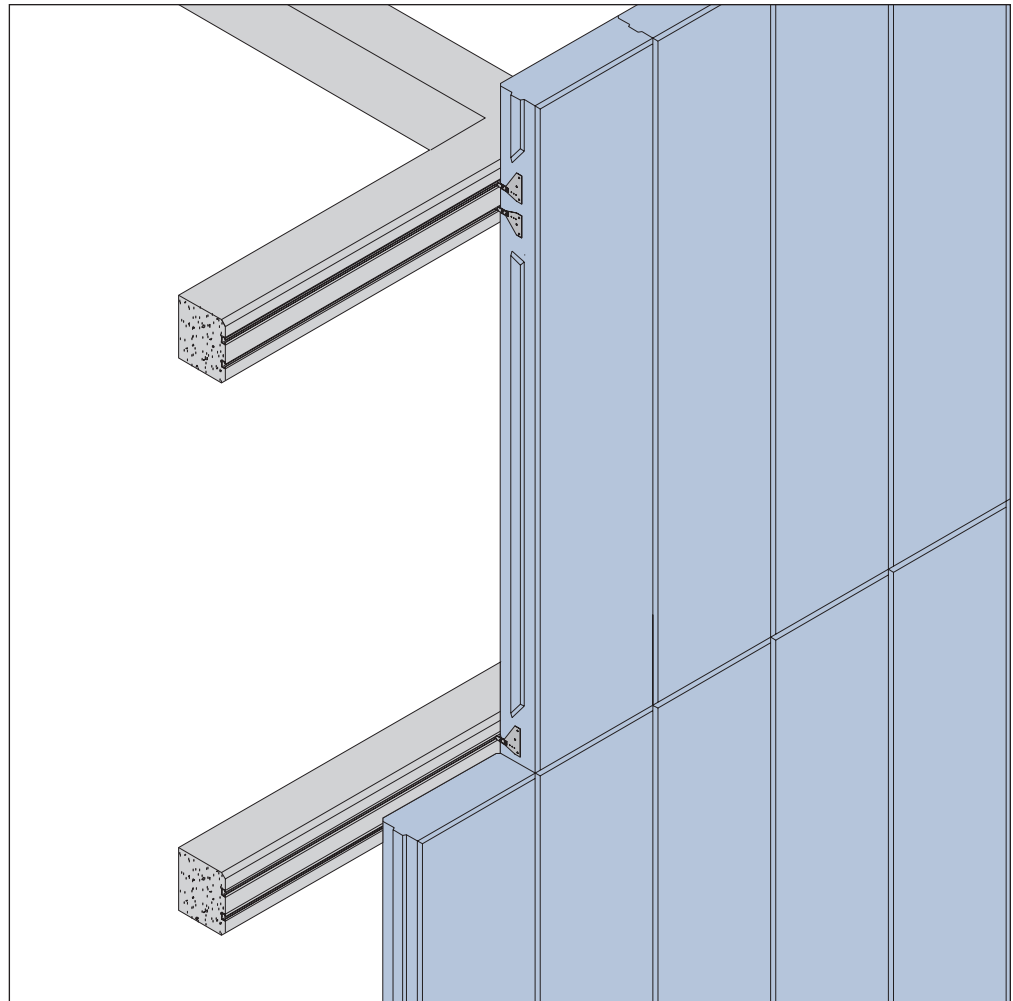
Head Detail



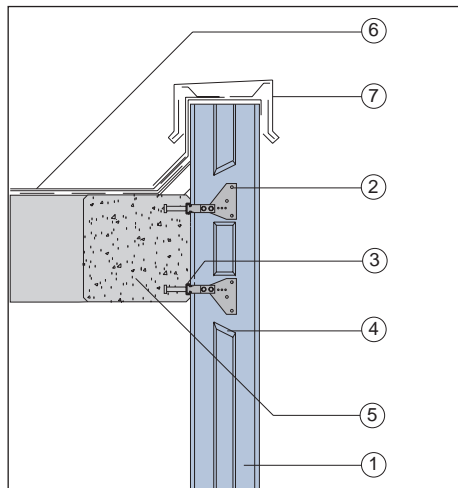
# AERCON Vertical Wall Panels

- 1 AERCON Vertical Wall Panel
- 2 Wall Plate Anchor
- 3 Anchor Rail Embedded in Concrete Beam
- 4 Trim Tongue for Wall Plate Anchor Installation
- 5 Concrete Beam
- 6 Single Ply or Built-Up Roofing
- 7 Parapet Flashing
- 8 Rout Wall Panel at Anchor Rail
- 9 Anchor Rail Welded to Steel Beam
- 10 Steel Column

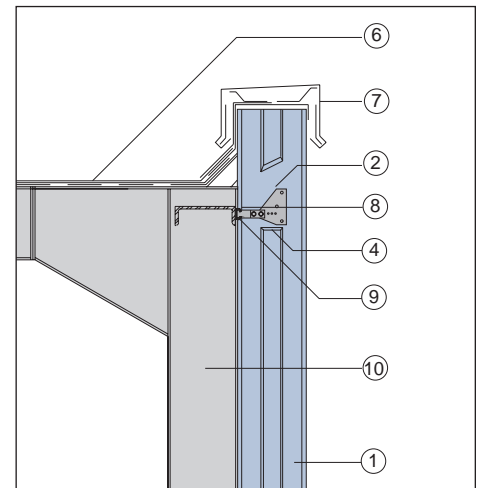
Parapet Detail



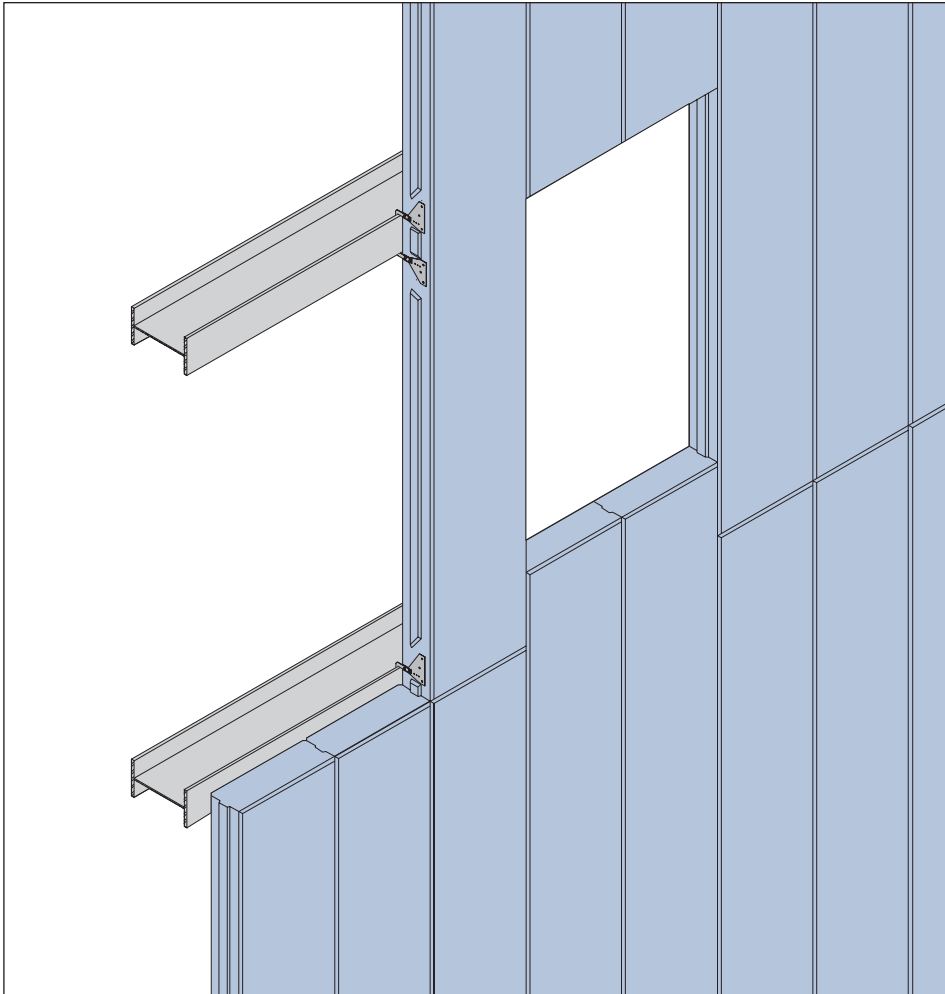
Parapet with Concrete Beam Detail



Parapet with Steel Column Detail



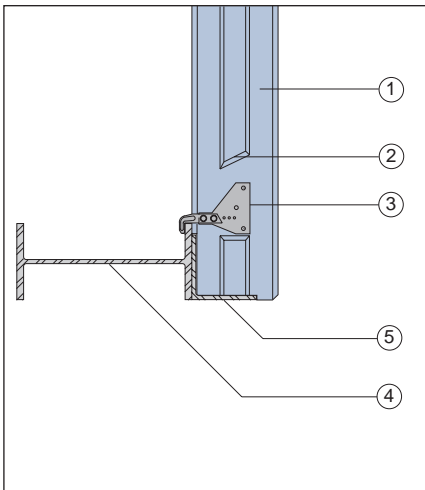
Intermediate Beam and Window Opening Detail



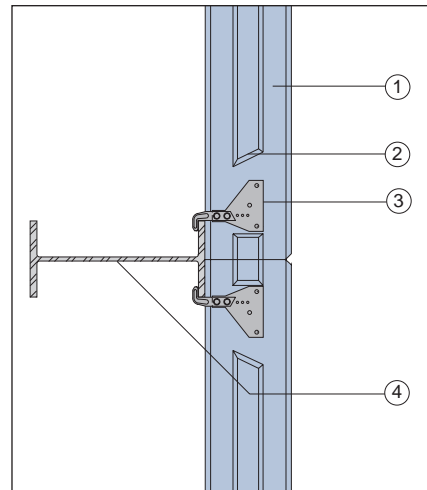
## AERCON Vertical Wall Panels

- ❶ AERCON Vertical Wall Panel
- ❷ Trim Tongue for Wall Plate Anchor Installation
- ❸ Wall Plate Anchor
- ❹ Steel Beam
- ❺ Steel Support Angle Attached to Steel Beam

Steel Beam and Lintel Section



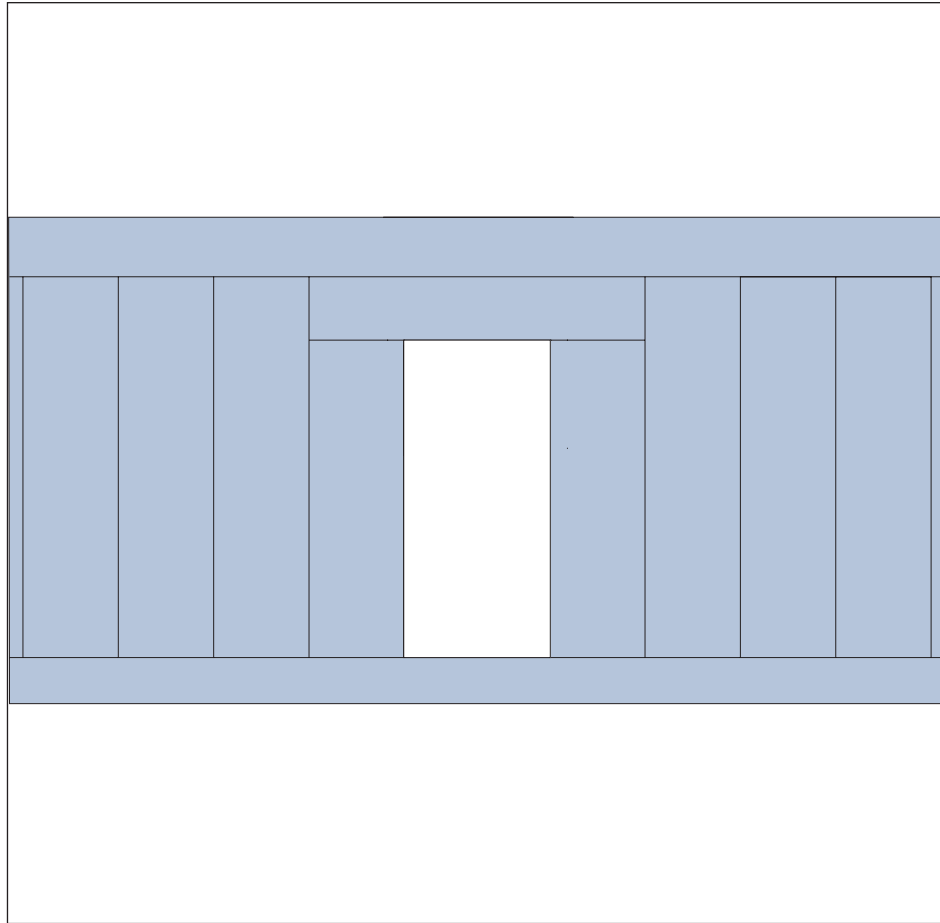
Intermediate Steel Beam Section



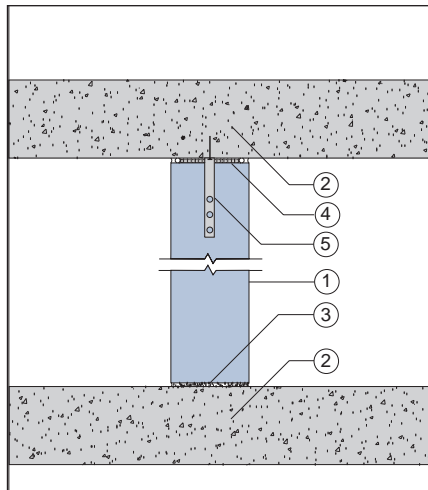
# AERCON Vertical Wall Panels

- 1 AERCON Vertical Wall Panel
- 2 Concrete Slab
- 3 3/8" ± Mortar Joint
- 4 Fire-Rated Joint System
- 5 Wall Strap Anchor

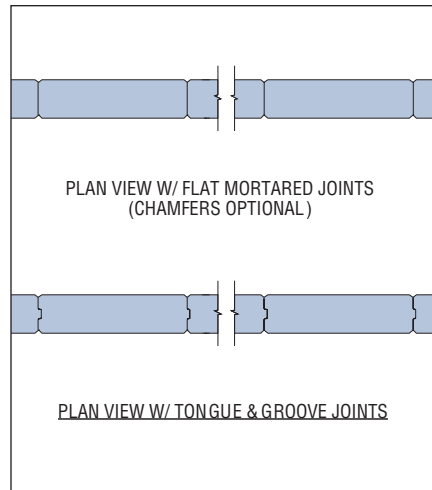
Fire Wall Detail



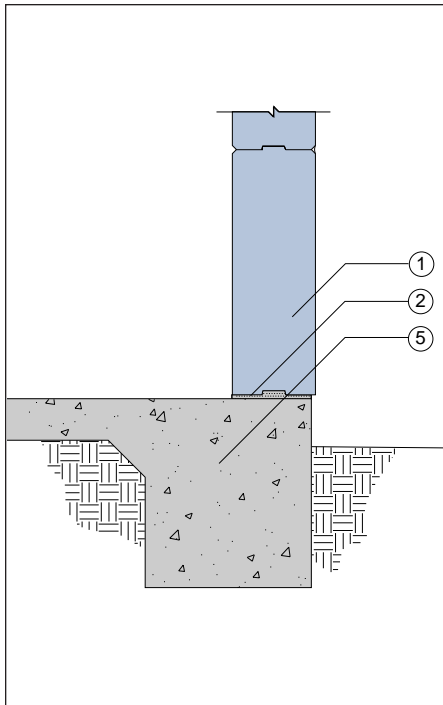
Floor to Floor Section



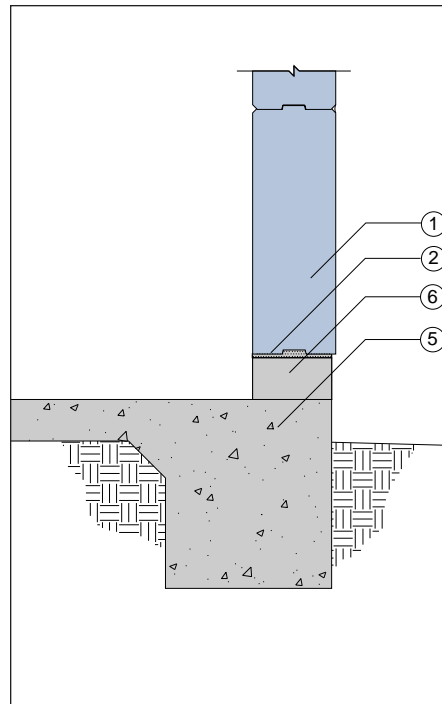
Vertical Wall Panel Details



Monolithic Slab



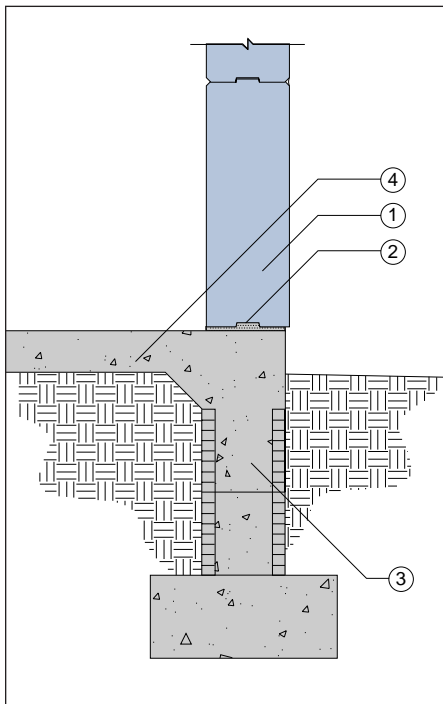
Monolithic Slab with Concrete Curb



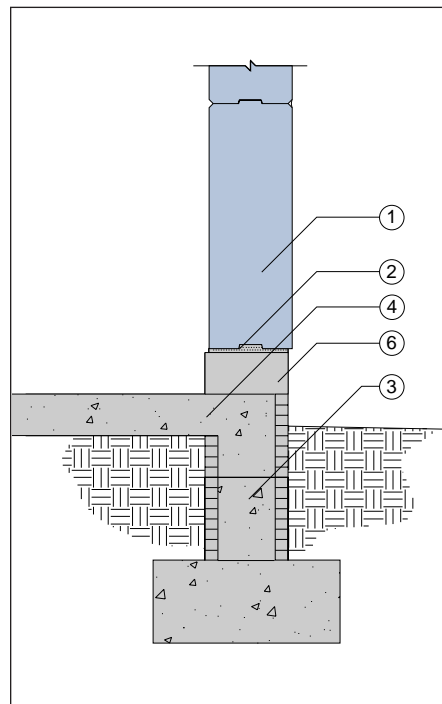
## AERCON Foundation Details

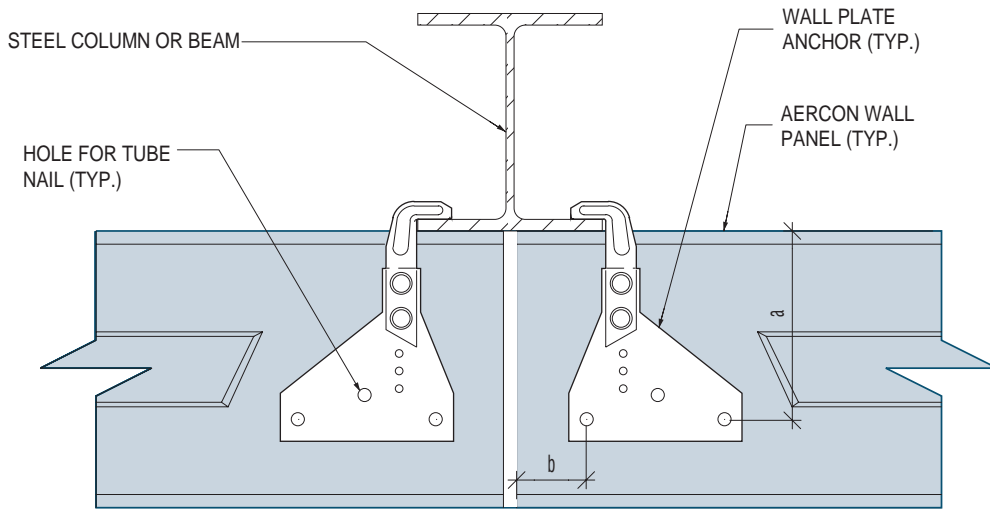
- 1** AERCON Horizontal Wall Panel
- 2** 3/8"± Mortar Bed
- 3** CMU Stemwall
- 4** Reinforced Concrete Slab
- 5** Turndown Concrete Slab
- 6** Continuous Concrete Curb

Stemwall



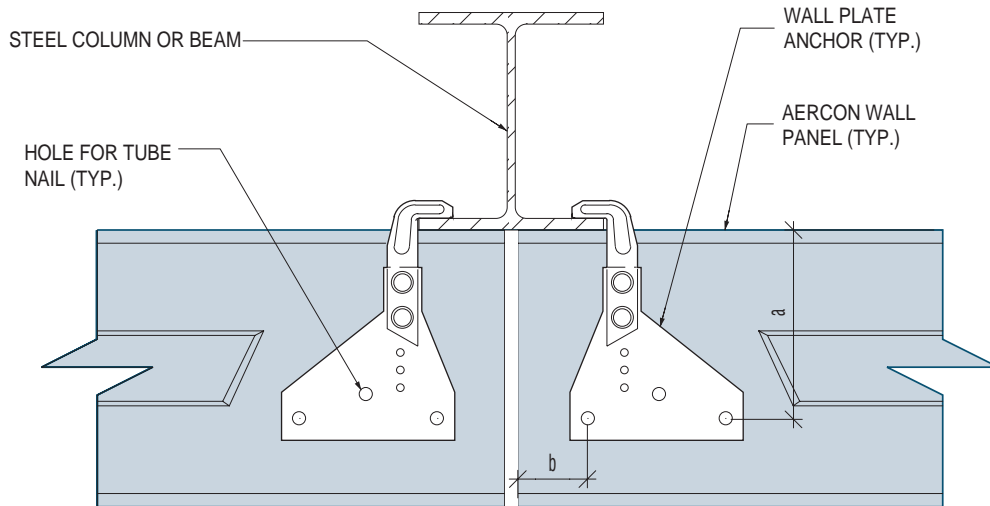
Stemwall with Concrete Curb





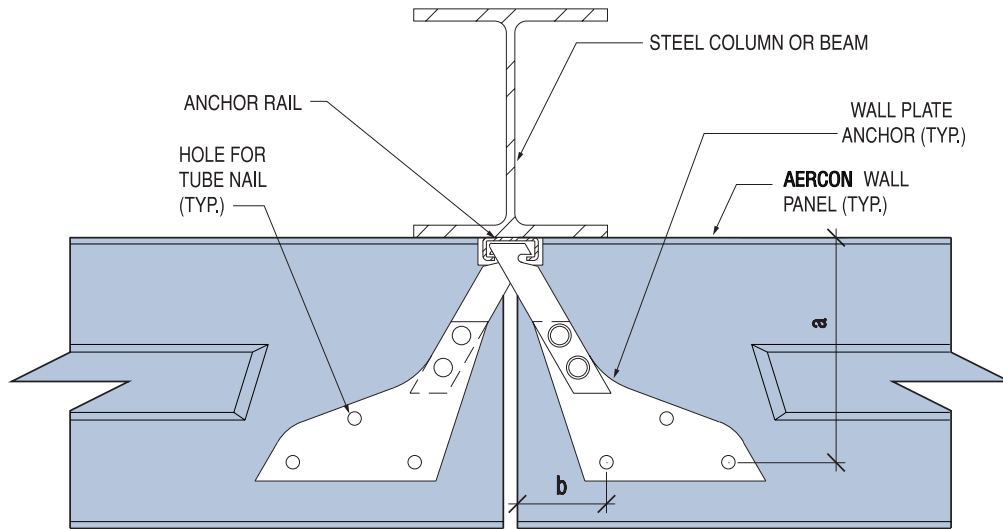
Part No.:	69 913	
Panel Thickness:	8" - 12"	
Min Edge Distance:	a = 5 1/8" b = 1 3/4"	
Allowable Load (Including 1/3 Increase for Wind):	AC3.3 540 lbs (Per Anchor)	AC4.4 675 lbs (Per Anchor)

Manufacturer Reference: FIXINOX



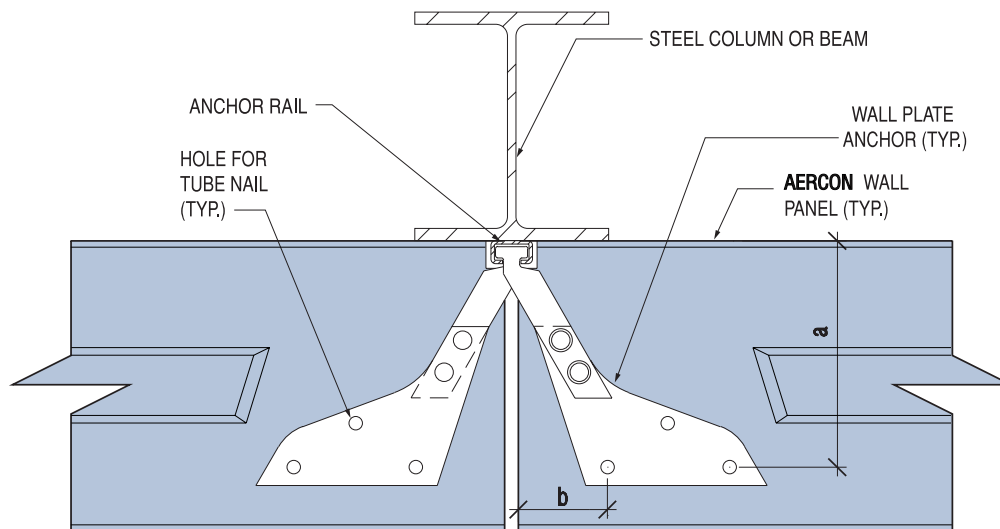
Part No.:	69 910	
Panel Thickness:	5" - 6"	
Min Edge Distance:	a = 4" b = 1 3/4"	
Allowable Load (Including 1/3 Increase for Wind):	AC3.3 325 lbs (Per Anchor)	AC4.4 415 lbs (Per Anchor)

Manufacturer Reference: FIXINOX



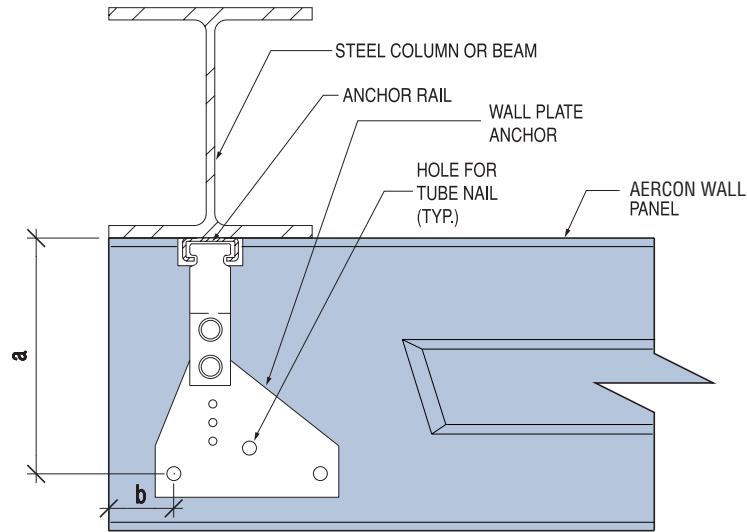
Part No.:	70 817	
Anchor Rail:	38/17	
Panel Thickness:	8" - 12"	
Min Edge Distance:	a = 5 3/4" b = 2 9/16"	
Allowable Load (Including 1/3 Increase for Wind):	AC3.3 570 lbs (Per Anchor)	AC4.4 675 lbs (Per Anchor)

Manufacturer Reference: FIXINOX



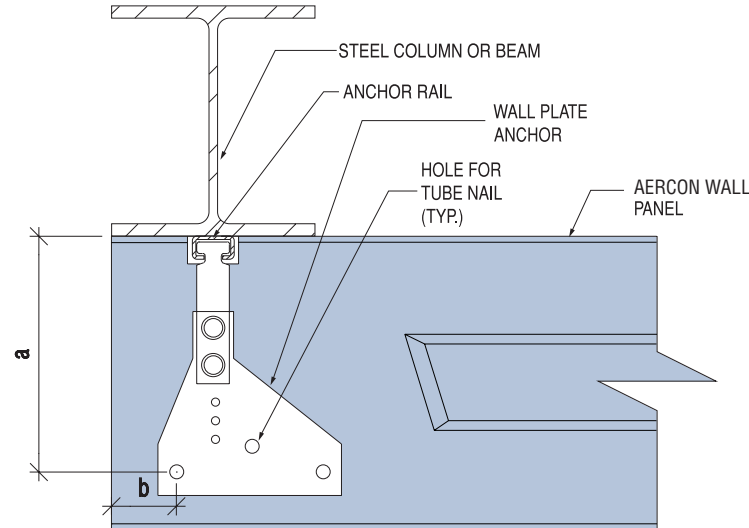
Part No.:	70 815	
Anchor Rail:	28/15	
Panel Thickness:	8" - 12"	
Min Edge Distance:	a = 5 3/4" b = 2 9/16"	
Allowable Load (Including 1/3 Increase for Wind):	AC3.3/AC4.4 525 lbs (Per Anchor)	

Manufacturer Reference: FIXINOX



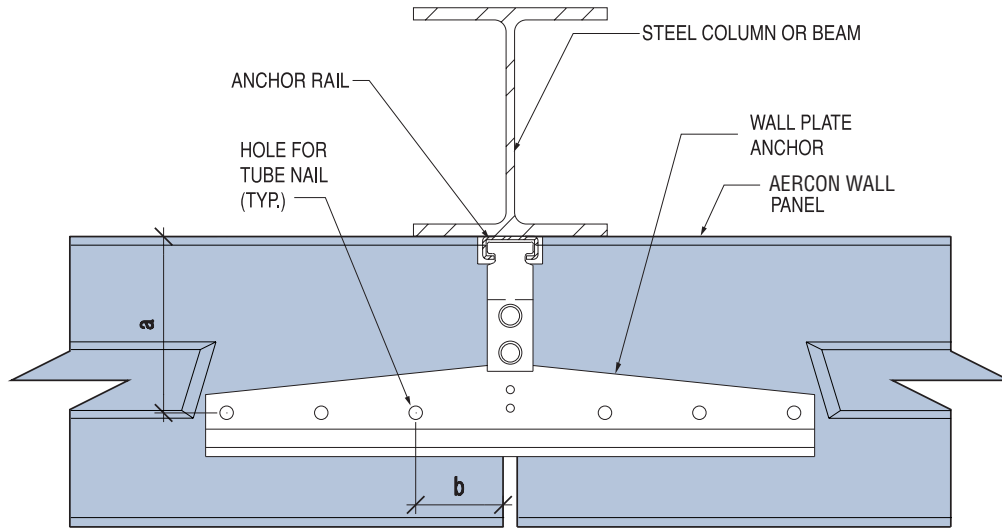
Part No.:	68 817	
Anchor Rail:	38/17	
Panel Thickness:	8" - 12"	
Min Edge Distance:	a = 5 3/4" b = 1 3/4"	
Allowable Load (Including 1/3 Increase for Wind):	AC3.3 810 lbs	AC4.4 1050 lbs

Manufacturer Reference: FIXINOX



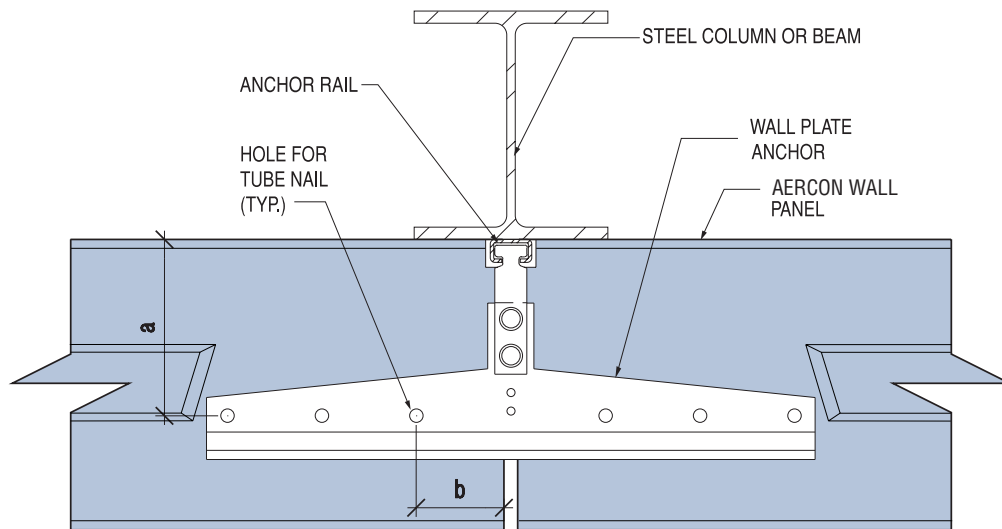
Part No.:	68 815	
Anchor Rail:	28/15	
Panel Thickness:	8" - 12"	
Min Edge Distance:	a = 5 3/4" b = 1 3/4"	
Allowable Load (Including 1/3 Increase for Wind):	AC3.3 810 lbs	AC4.4 1050 lbs

Manufacturer Reference: FIXINOX



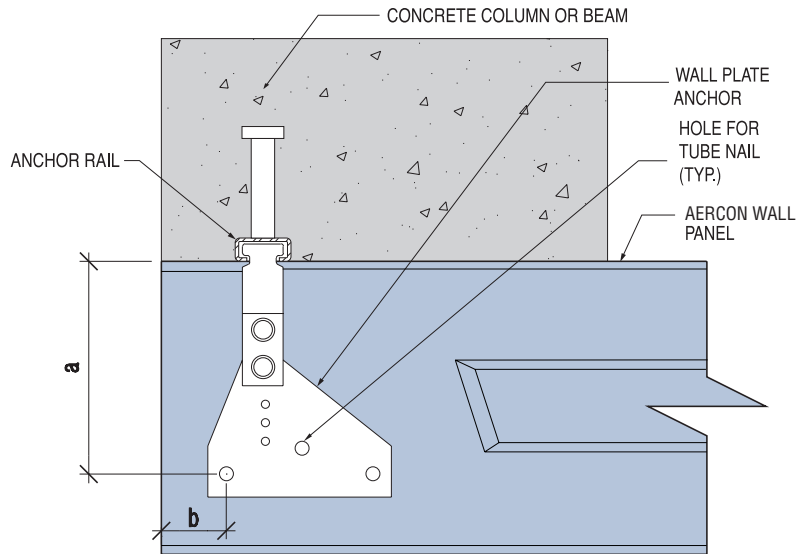
Part No.:	67 817	
Anchor Rail:	38/17	
Panel Thickness:	8" - 12"	
Min Edge Distance:	a = 3 15/16" b = 2 3/8"	
Allowable Load (Including 1/3 Increase for Wind):	AC3.3 1080 lbs (per anchor)	AC4.4 1515 lbs (per anchor)

Manufacturer Reference: FIXINOX



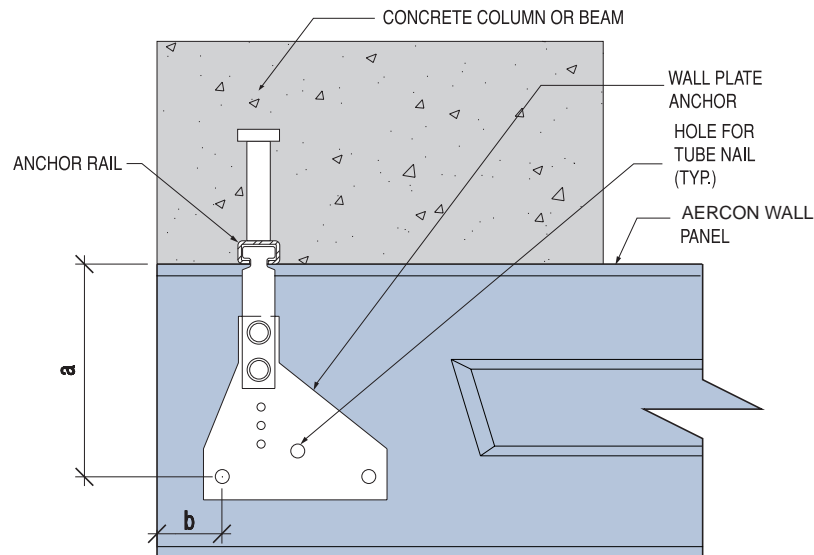
Part No.:	67 815	
Anchor Rail:	28/15	
Panel Thickness:	8" - 12"	
Min Edge Distance:	a = 3 15/16" b = 2 3/8"	
Allowable Load (Including 1/3 Increase for Wind):	AC3.3/AC4.4 1050 lbs (per anchor)	

Manufacturer Reference: FIXINOX



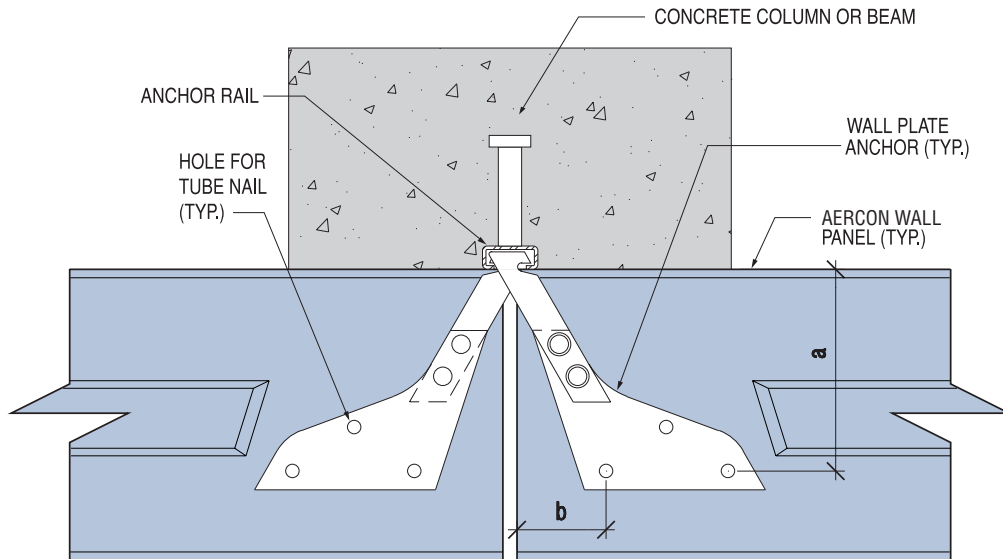
Part No.:	68 817	
Anchor Rail:	38/17	
Panel Thickness:	8" - 12"	
Min Edge Distance:	a = 5 3/4" b = 1 3/4"	
Allowable Load (Including 1/3 Increase for Wind):	AC3.3 810 lbs	AC4.4 1050 lbs

Manufacturer Reference: FIXINOX



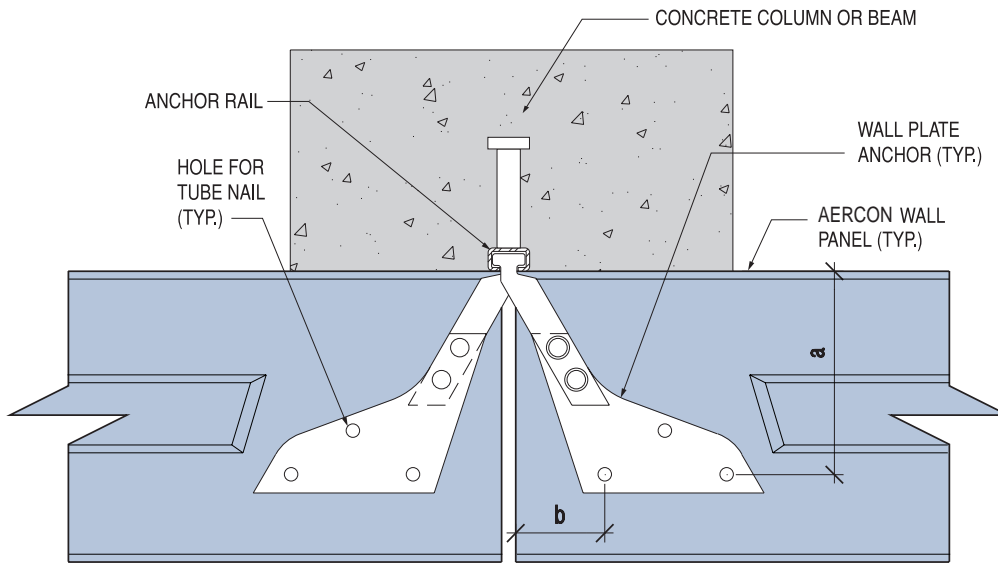
Part No.:	68 815	
Anchor Rail:	28/15	
Panel Thickness:	8" - 12"	
Min Edge Distance:	a = 5 3/4" b = 1 3/4"	
Allowable Load (Including 1/3 Increase for Wind):	AC3.3 810 lbs	AC4.4 1050 lbs

Manufacturer Reference: FIXINOX



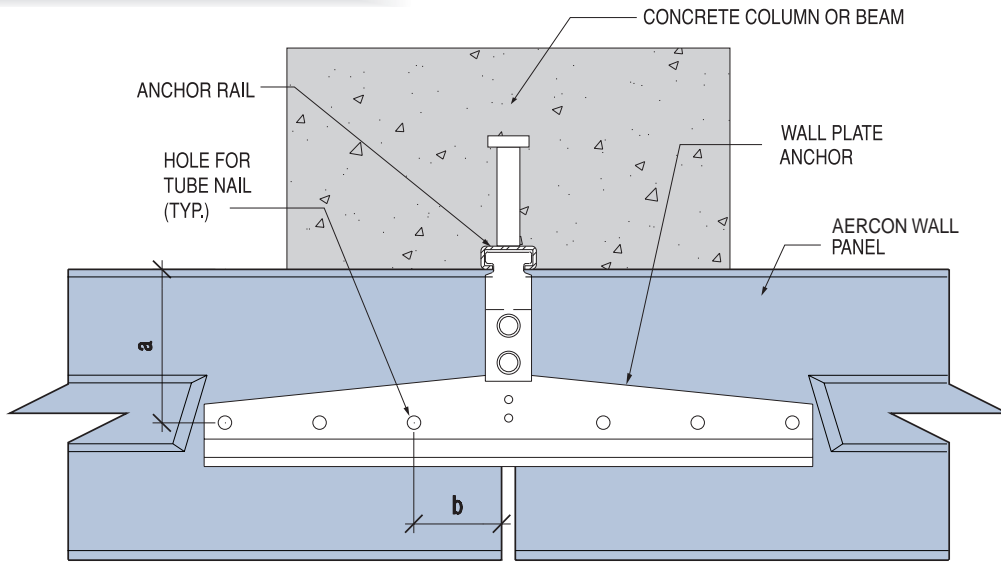
Part No.:	70 817	
Anchor Rail:	38/17	
Panel Thickness:	8" - 12"	
Min Edge Distance:	a = 5 3/4" b = 2 9/16"	
Allowable Load (Including 1/3 Increase for Wind):	AC3.3 570 lbs (Per Anchor)	AC4.4 675 lbs (Per Anchor)

Manufacturer Reference: FIXINOX



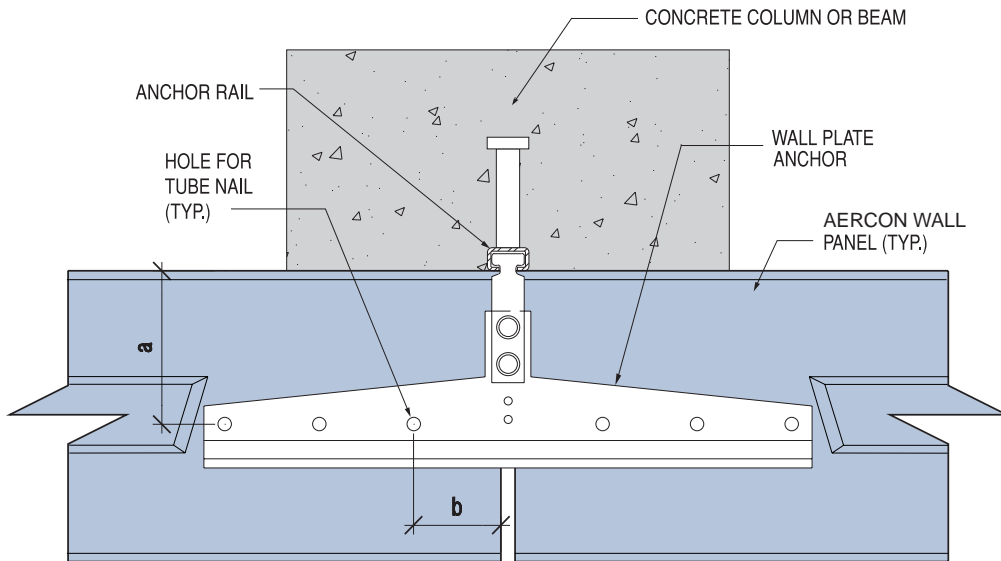
Part No.:	70 815	
Anchor Rail:	28/15	
Panel Thickness:	8" - 12"	
Min Edge Distance:	a = 5 3/4" b = 2 9/16"	
Allowable Load (Including 1/3 Increase for Wind):	AC3.3/AC4.4 525 lbs (Per Anchor)	

Manufacturer Reference: FIXINOX



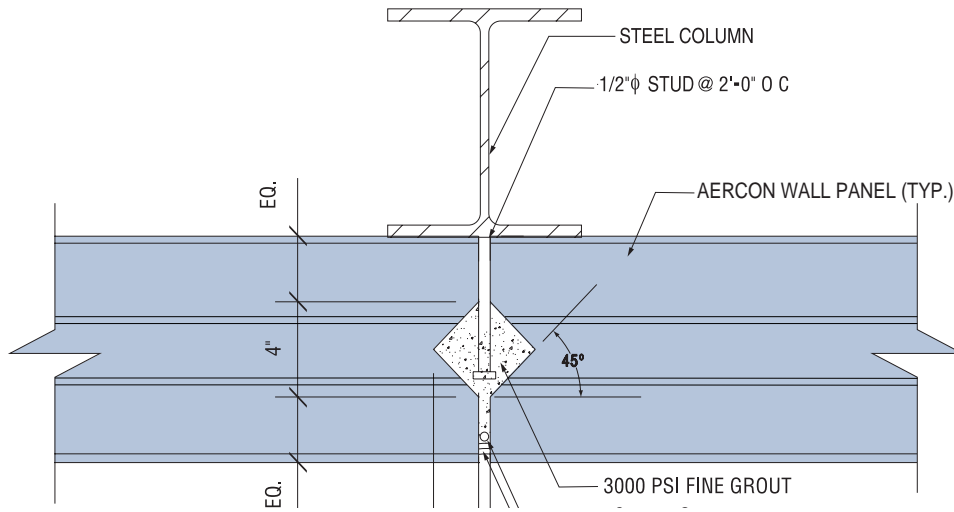
Part No.:	67 817	
Anchor Rail:	38/17	
Panel Thickness:	8" - 12"	
Min Edge Distance:	a = 3 15/16" b = 2 3/8"	
Allowable Load (Including 1/3 Increase for Wind):	AC3.3 1080 lbs (per anchor)	AC4.4 1515 lbs (per anchor)

Manufacturer Reference: FIXINOX



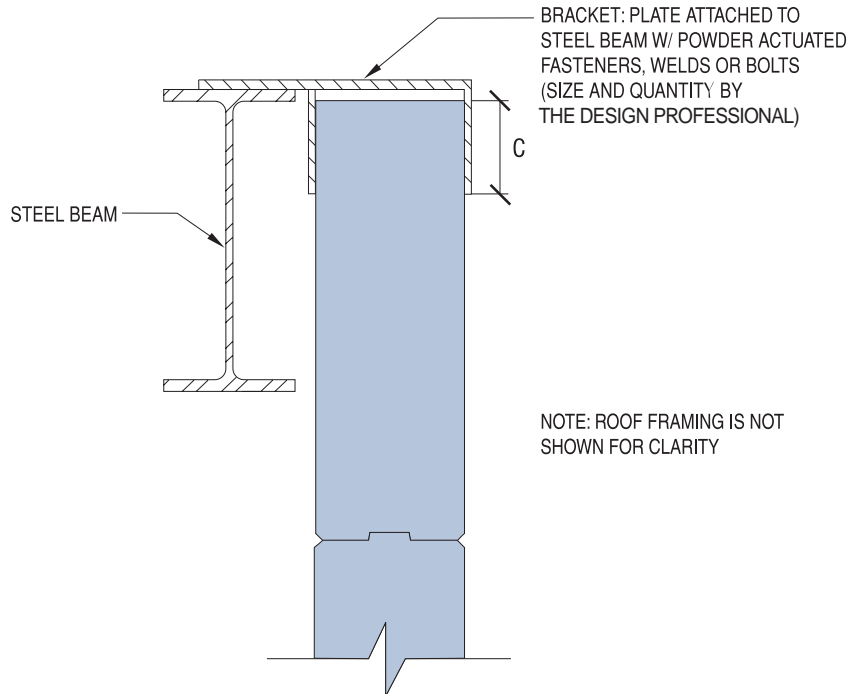
Part No.:	67 815	
Anchor Rail:	28/15	
Panel Thickness:	8" - 12"	
Min Edge Distance:	a = 3 15/16" b = 2 3/8"	
Allowable Load (Including 1/3 Increase for Wind):	AC3.3/AC4.4 1050 lbs (per anchor)	

Manufacturer Reference: FIXINOX



Part No.:	Grouted Key Joint Connection	
Panel Thickness:	8"	10"
Min Bearing Length:	2"	2"
Allowable Load (Including 1/3 Increase for Wind):	AC4/AC4.4 1000 lbs/ft	AC4/AC4.4 1200 lbs/ft

Manufacturer Reference: GENERIC



Part No.:	Steel Bracket Connection at Gable Wall	
Panel Thickness:	6" - 12"	
Min Bearing Length:	c = Calculation based on Allowable Bearing Stress = 60 psi (AC4)	
Allowable Load:	By Design	
Manufacturer Reference:	GENERIC	

# C. Load Bearing Vertical Wall Panels

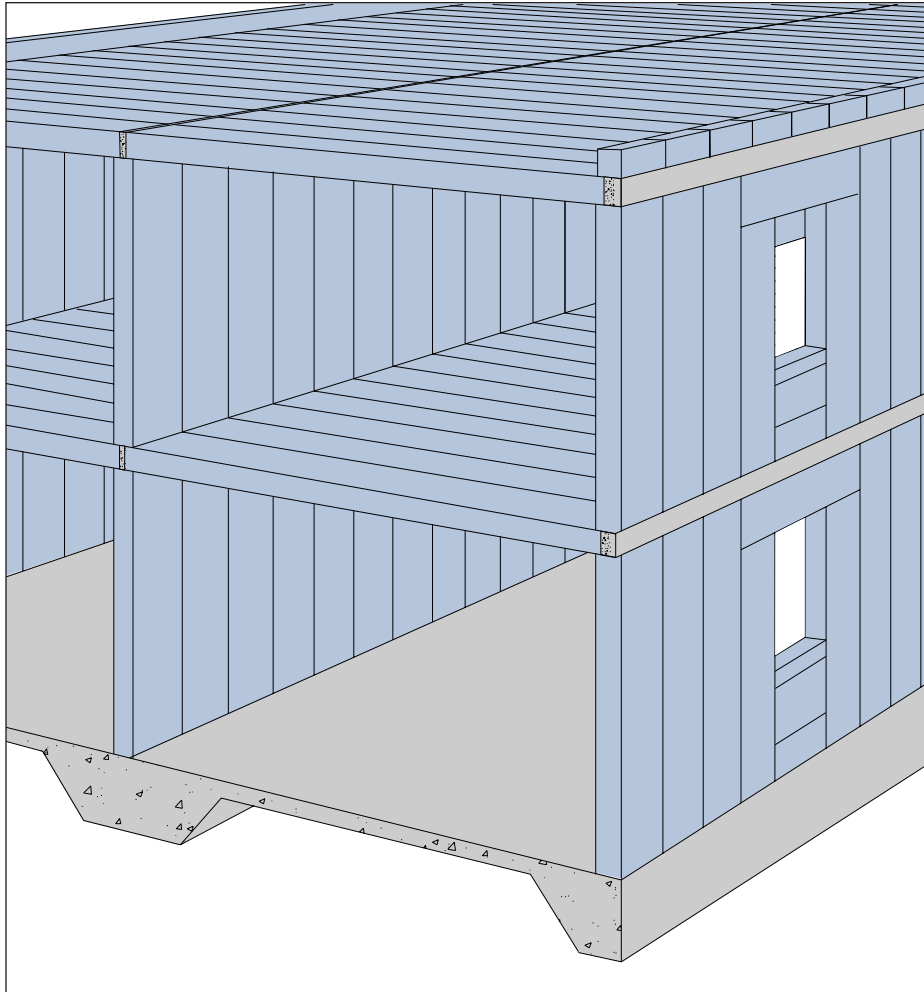
## Load Bearing Vertical Wall Panels

Load Bearing Vertical Wall Panel System

Wall Section with Roof Panels

Wall Elevation at Window

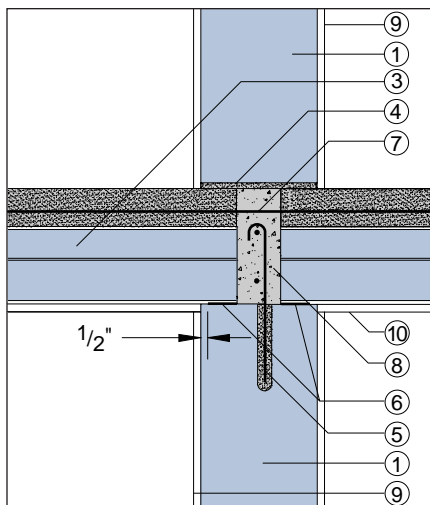
## Load Bearing Vertical Wall System



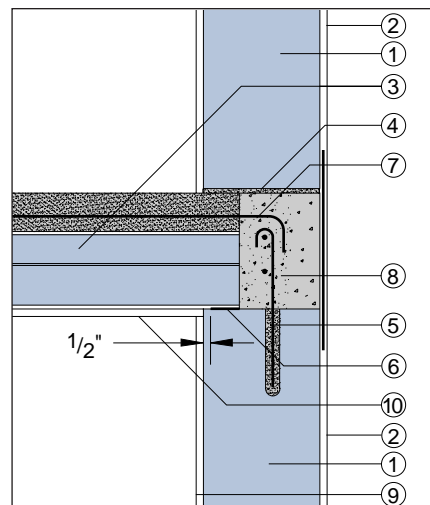
# AERCON Vertical Wall Panels

- 1 AERCON Vertical Wall Panel
- 2 AERCON Compatible Coating w/Mesh at Discontinuities
- 3 AERCON Floor Panel (Perpendicular to Wall)
- 4 1/8"± AERCON Mortar Bed
- 5 Dowel (Drill and Epoxy as Required)
- 6 2 Layers of Felt Paper
- 7 Reinforcing Bar in Grout Filled Key Joint
- 8 Bond Beam w/Reinforcing Bars
- 9 AERCON Interior Wall Plaster or Gypsum Board
- 10 Gypsum Board

## Interior Bearing Wall



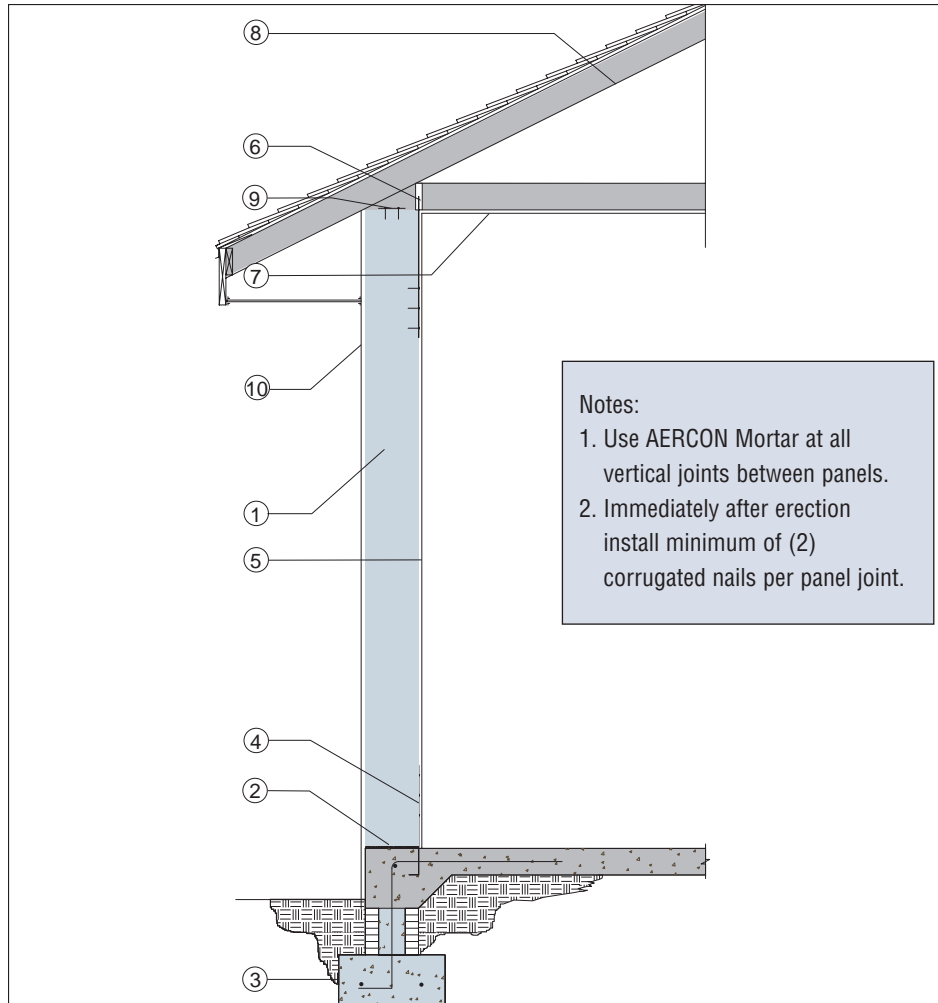
## Exterior Bearing Wall



# AERCON Vertical Wall Panels

- 1 AERCON Vertical Wall Panel
- 2 3/8" ± Mortar Bed
- 3 Wall Footing
- 4 Foundation Strap Anchor
- 5 AERCON Interior Wall Plaster or Gypsum Board
- 6 Truss Anchor
- 7 Gypsum Board
- 8 Roof Truss
- 9 Continuous Strap Anchor
- 10 AERCON Compatible Coating

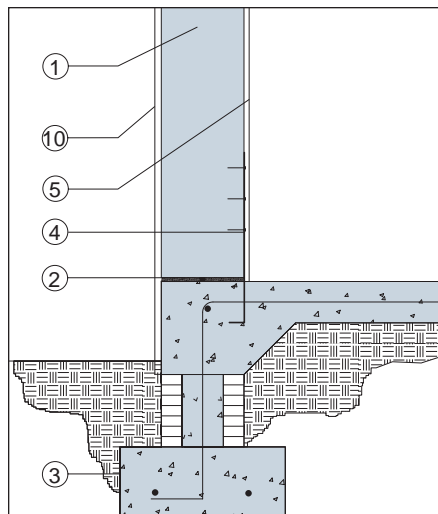
Wall Section with Roof Truss



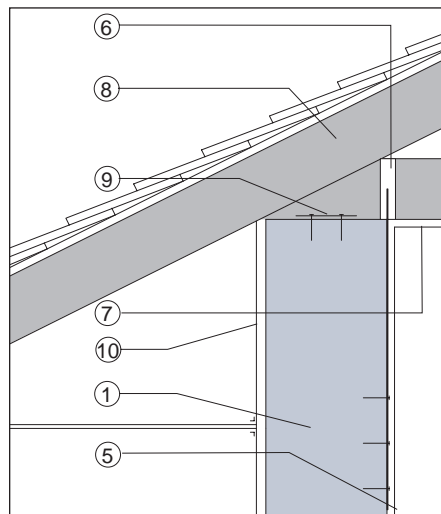
Notes:

1. Use AERCON Mortar at all vertical joints between panels.
2. Immediately after erection install minimum of (2) corrugated nails per panel joint.

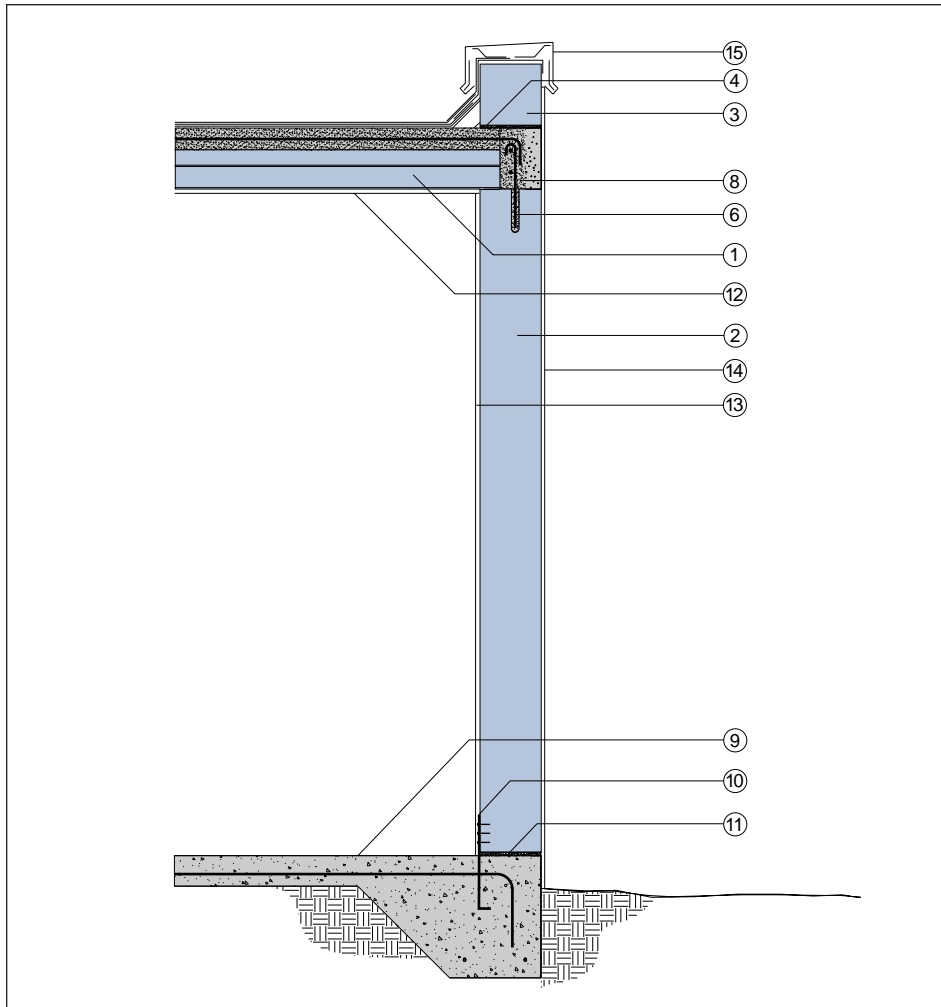
Foundation Detail



Truss Connection Detail



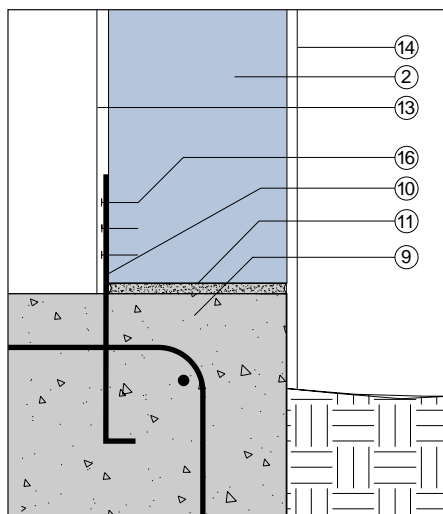
Wall Section with Roof Panel



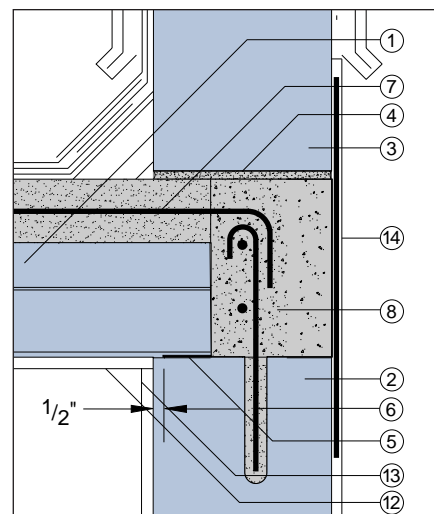
## AERCON Vertical Wall Panels

- 1 AERCON Roof Panel
- 2 AERCON Vertical Wall Panel
- 3 AERCON Block Parapet Wall
- 4 3/8" ± Mortar Bed
- 5 2 Layers of Felt Paper
- 6 Dowel (Drill and Epoxy as Required)
- 7 Reinforcing Bar in Grout Filled Key Joint
- 8 Bond Beam w/Reinforcing Bars
- 9 Reinforced Concrete Slab
- 10 Foundation Strap Anchor
- 11 1/8" ± AERCON Mortar Bed
- 12 Gypsum Board
- 13 AERCON Interior Wall Plaster or Gypsum Board
- 14 AERCON Compatible Coating w/Mesh at Discontinuities
- 15 Parapet Flashing
- 16 Fastener

Foundation Detail



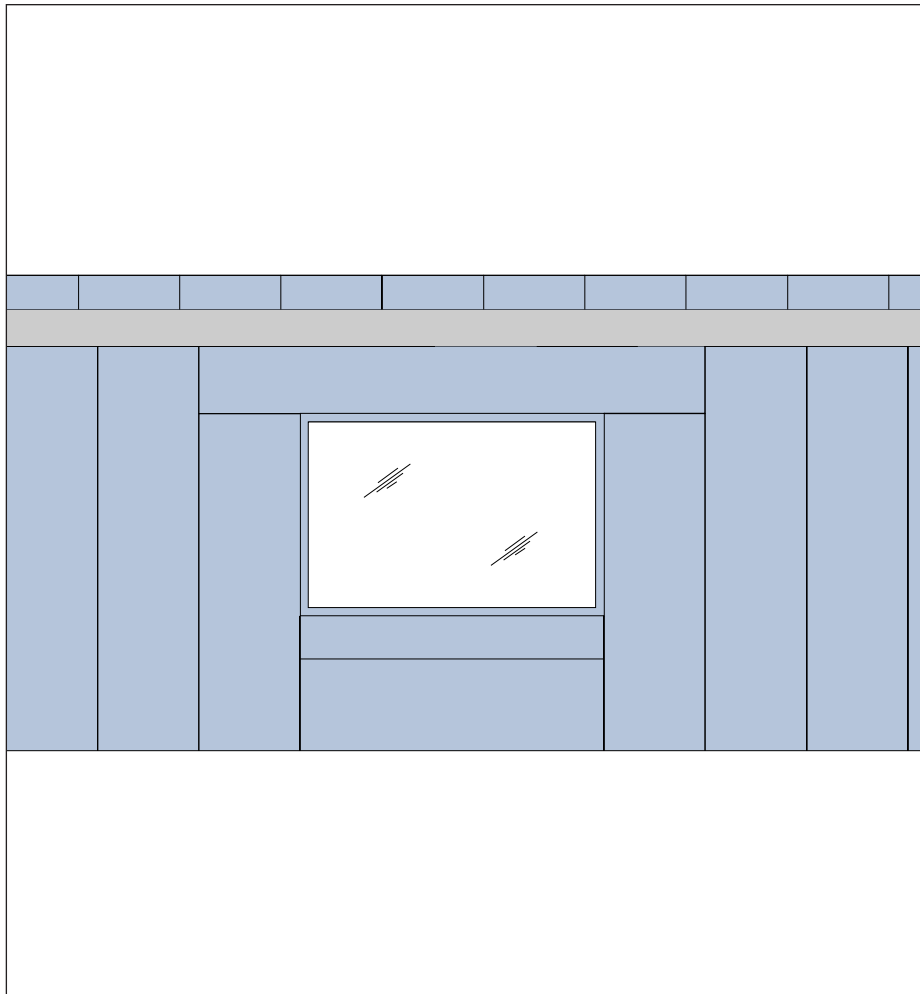
Bond Beam Detail



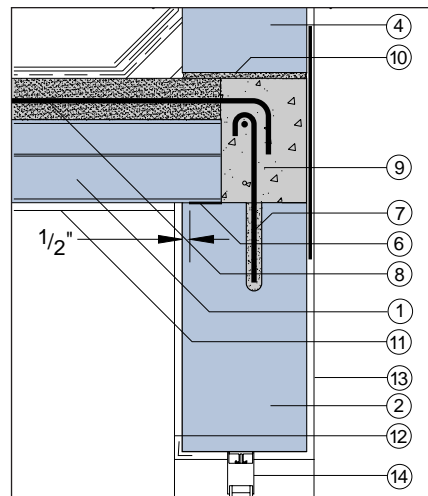
# AERCON Vertical Wall Panels

- 1 AERCON Roof Panel
- 2 AERCON Lintel Panel
- 3 AERCON Sill Panel
- 4 AERCON Block Parapet Wall
- 5 Pre-Cast Concrete Sill
- 6 2 Layers of Felt Paper
- 7 Dowel (Drill and Epoxy as Required)
- 8 Reinforcing Bar in Grout Filled Key Joint
- 9 Bond Beam w/Reinforcing Bars
- 10 3/8" ± Mortar Bed
- 11 Gypsum Board
- 12 AERCON Interior Wall Plaster or Gypsum Board
- 13 AERCON Compatible Coating w/Mesh at Discontinuities
- 14 Window

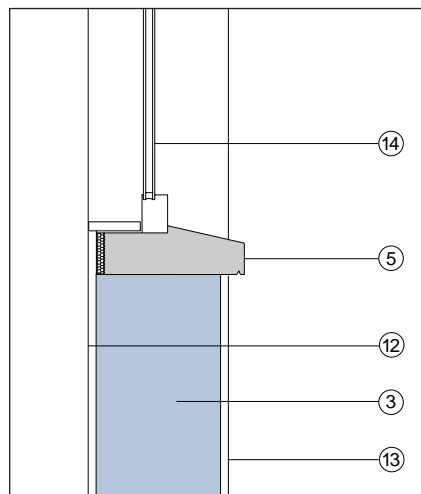
Wall Elevation at Window



Section Thru Lintel



Section Thru Sill



# D. Blocks and Lintels

## Exterior Walls

### Single Story Walls

Exterior Wall with Tie-Down in Core

Exterior Wall with Door Opening

Exterior Wall with Window Opening

### Two Story Walls

Exterior Wall with Steel Bar Joists

Exterior Wall with Wood "I" Floor Joists

## Foundation Details

Monolithic Slab with Foundation Anchor

Stemwall with Foundation Anchor

Existing Monolithic Slab with Epoxied Anchor

Monolithic Slab with J-Bolt

## Wall Tie-Down Details

Plaster over Tie-Down in Chase

Furred Gypsum over Tie-Down in Chase

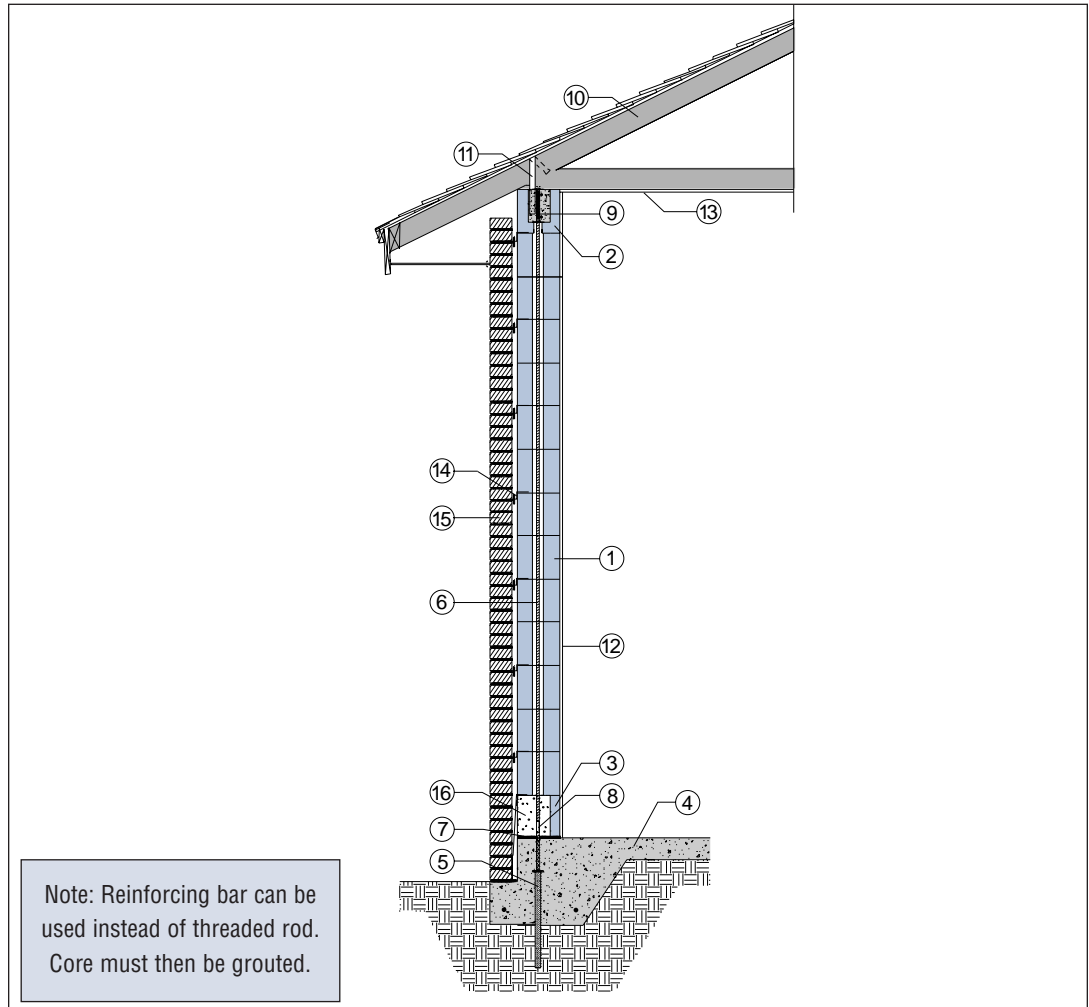
Tie-Down in Core

Brick Veneer with Gypsum Board over Tie-Down in Chase

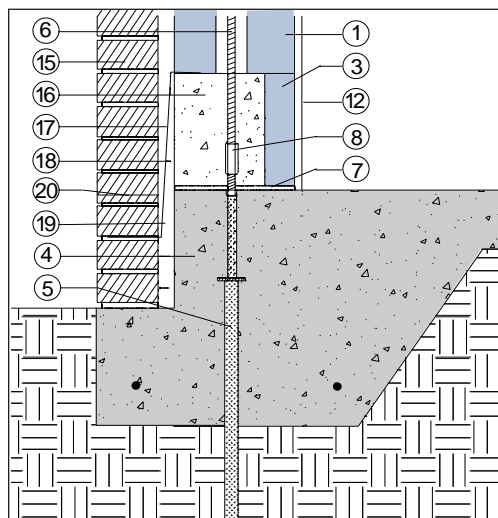
# AERCON Exterior Wall

- 1 Cored AERCON Block
- 2 Concrete Filled AERCON "U" Lintel w/Reinforcing
- 3 AERCON Clean-Out Block
- 4 Reinforced Concrete Slab
- 5 Foundation Anchor
- 6 Threaded Tie-Down Rod
- 7 3/8" ± Mortar Bed
- 8 Threaded Coupler
- 9 Sleeve w/Cover Plate Top & Bottom and 1 Nut
- 10 Roof Truss
- 11 Truss Anchor
- 12 AERCON Interior Wall Plaster or Gypsum Board
- 13 Gypsum Board
- 14 Brick Ties
- 15 Clay or Concrete Brick Veneer
- 16 Fill Clean-Out Block Opening with AERCON Repair Mortar
- 17 Flashing
- 18 Membrane Waterproofing
- 19 Grout Fill
- 20 Weep Holes

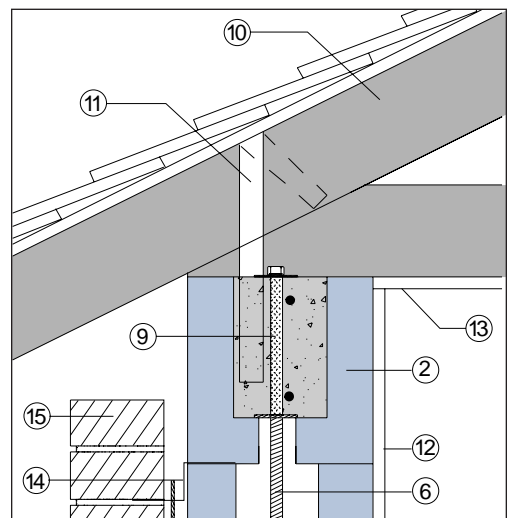
Tie-Down Core Detail



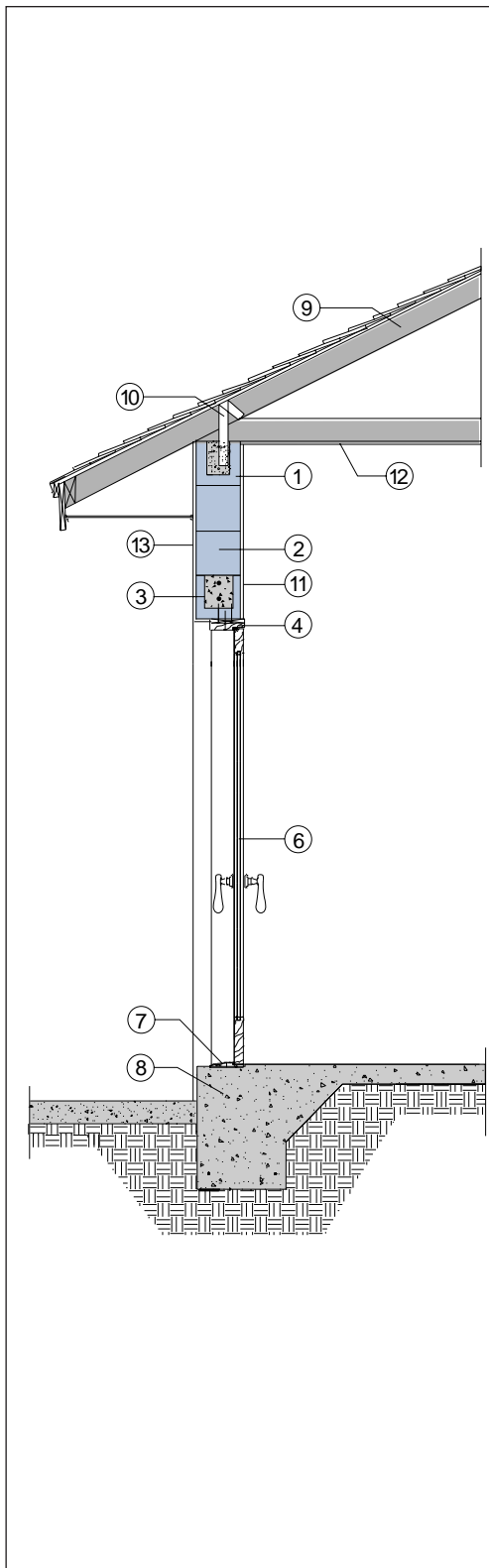
Foundation



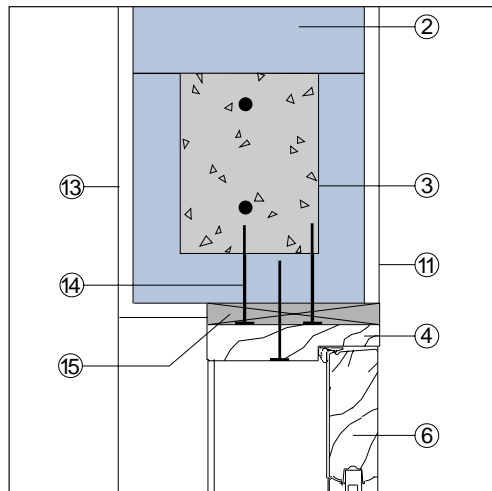
Bond Beam



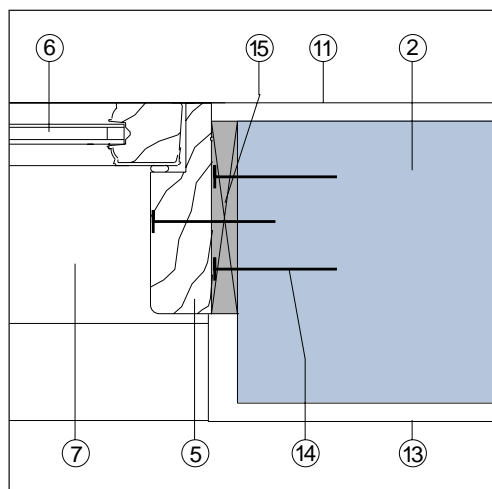
Door Section



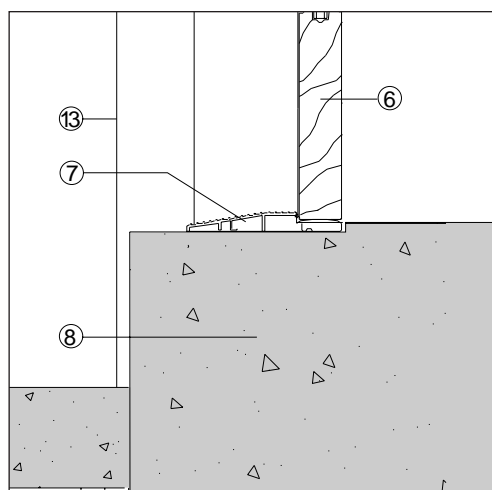
Door Head Section



Door Jamb Section



Threshold Section



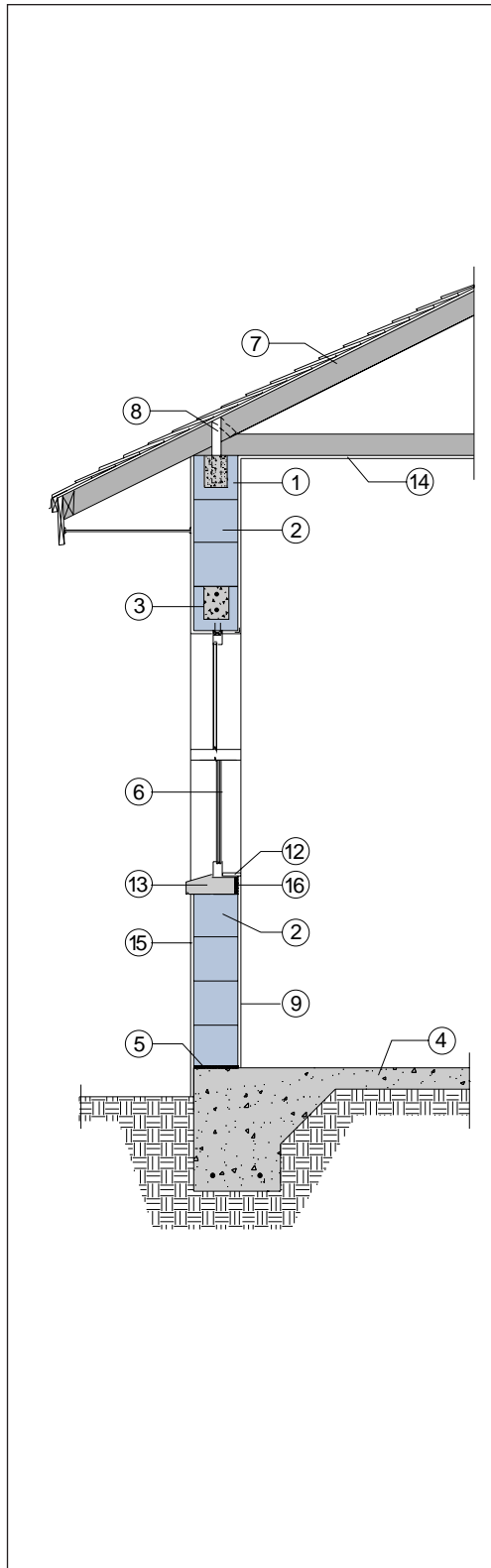
## AERCON Exterior Wall

- 1** Concrete Filled AERCON "U" Lintel w/Reinforcing
- 2** AERCON Block
- 3** Concrete Filled AERCON "U" Lintel w/ Reinforcing or AERCON Reinf. Solid Lintel
- 4** Door Head
- 5** Door Jamb
- 6** Exterior Door
- 7** Threshold
- 8** Reinforced Concrete Slab
- 9** Roof Truss
- 10** Truss Anchor
- 11** AERCON Interior Wall Plaster or Gypsum Board
- 12** Gypsum Board
- 13** AERCON Compatible Coating
- 14** Fasteners
- 15** Pressure Treated Buck Strip

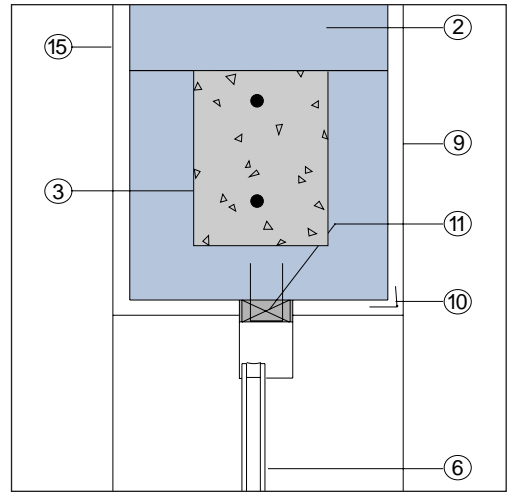
# AERCON Exterior Wall

- 1 Concrete Filled AERCON "U" Lintel w/Reinforcing
- 2 AERCON Block
- 3 Concrete Filled AERCON "U" Lintel w/ Reinforcing or AERCON Reinf. Solid Lintel
- 4 Reinforced Concrete Slab
- 5 3/8" ± Mortar Bed
- 6 Window
- 7 Roof Truss
- 8 Truss Anchor
- 9 AERCON Interior Wall Plaster or Gypsum Board
- 10 Corner Bead
- 11 Pressure Treated Buck Strip
- 12 Interior Window Sill
- 13 Pre-Cast Concrete Sill
- 14 Gypsum Board
- 15 AERCON Compatible Coating
- 16 AERCON or Styrofoam Insulation

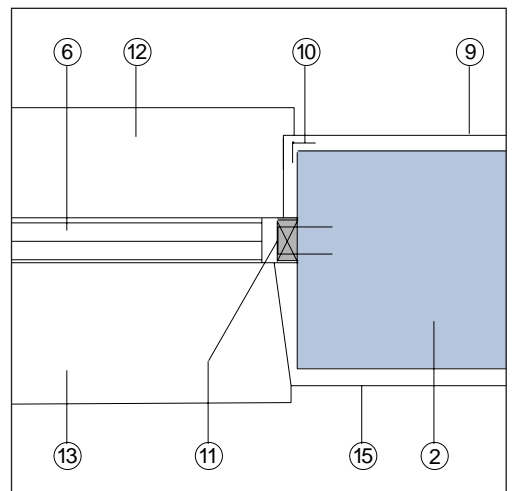
Wall Section



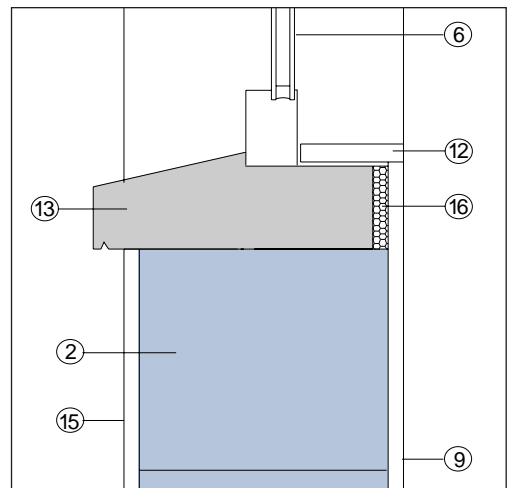
Window Head Section



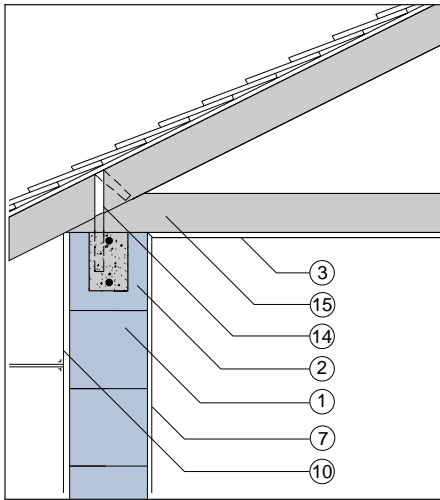
Window Jamb Section



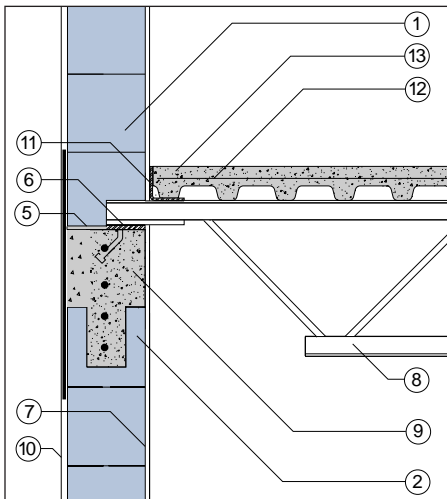
Window Sill Section



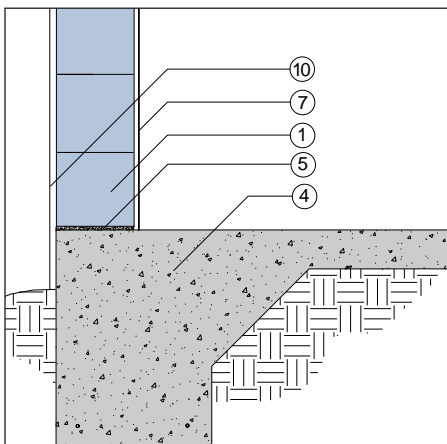
**Bond Beam Detail**



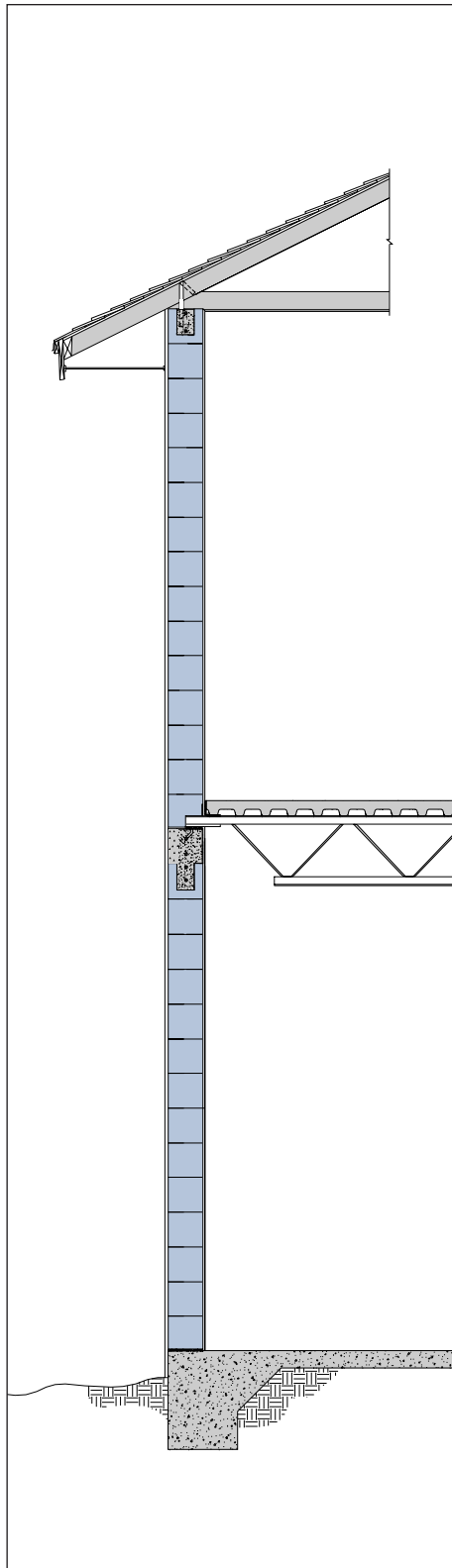
**Joist Bearing Detail**



**Foundation Detail**



**Wall Section**



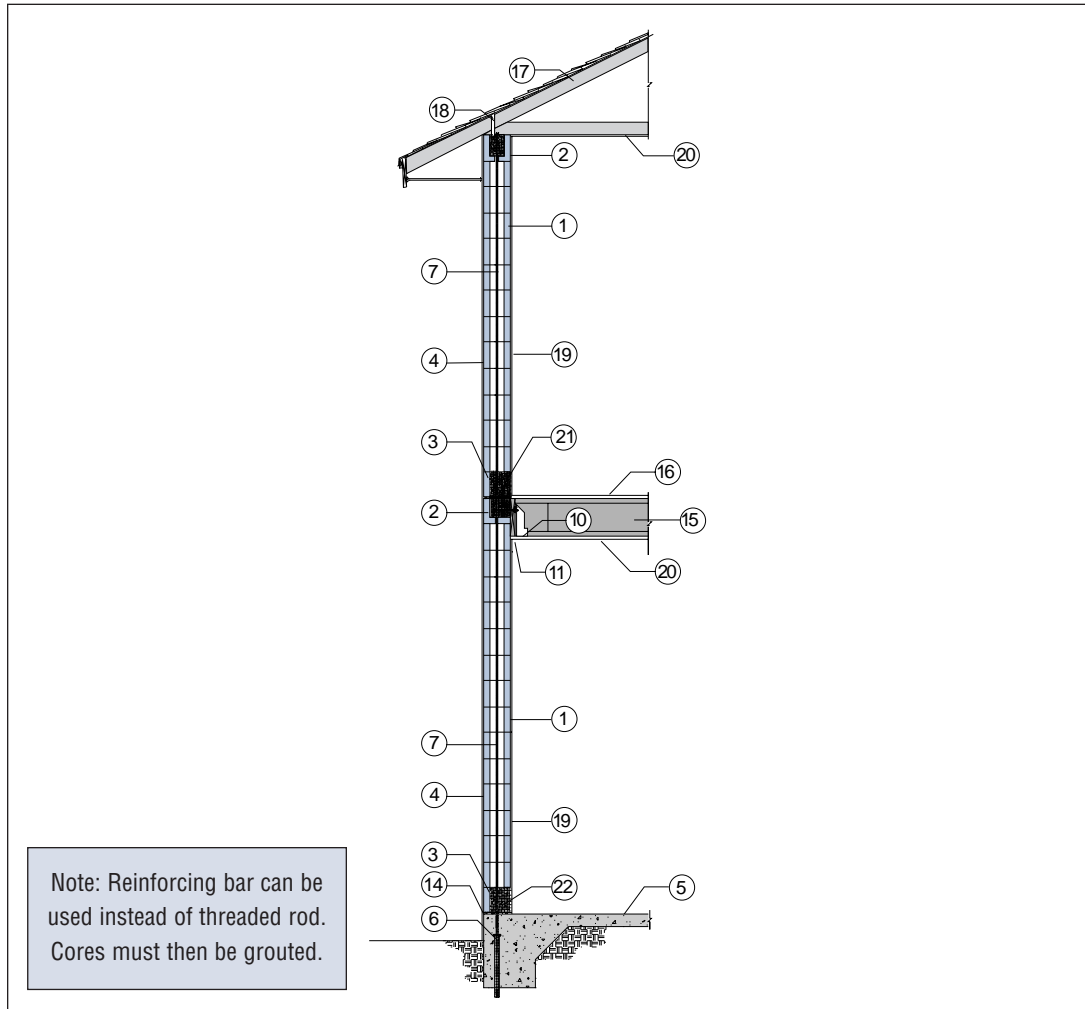
# AERCON Exterior Wall

- 1 AERCON Block
- 2 Concrete Filled AERCON "U" Lintel w/Reinforcing
- 3 Gypsum Board
- 4 Reinforced Concrete Slab
- 5 3/8"± Mortar Bed
- 6 Bearing Plate w/Shear Studs
- 7 AERCON Interior Plaster or Gypsum Board
- 8 Steel Bar Joist
- 9 Bond Beam w/Reinforcing Bars
- 10 AERCON Compatible Coating w/Mesh at Discontinuities
- 11 Steel Angle
- 12 Welded Wire Fabric
- 13 Concrete on Metal Deck
- 14 Truss Anchor
- 15 Roof Truss

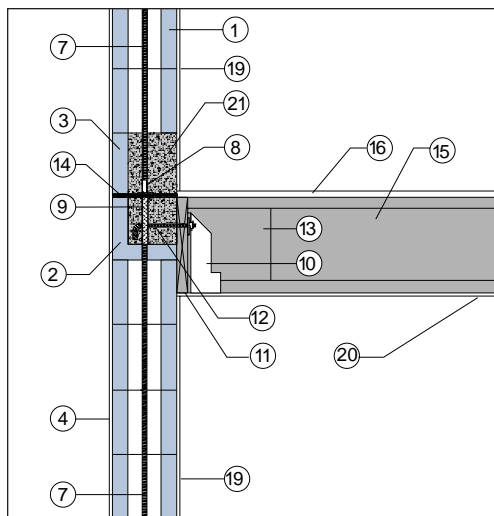
# AERCON - Exterior Wall

## Elevated Floor Details

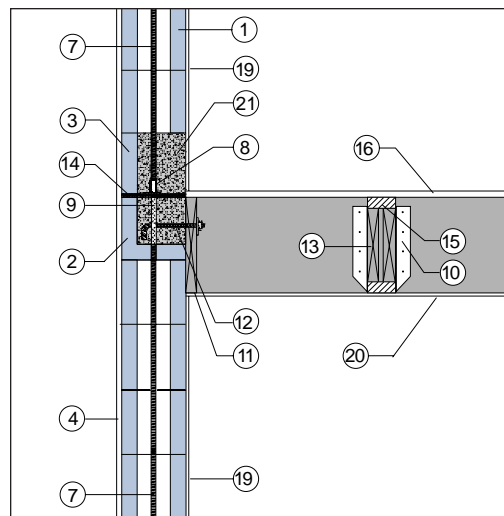
- 1 Cored AERCON Block
- 2 Concrete Filled AERCON "U" Lintel w/Reinforcing
- 3 AERCON Clean-Out Block
- 4 AERCON Compatible Coating w/Mesh at Discontinuities
- 5 Reinforced Concrete Slab
- 6 Foundation Anchor
- 7 Threaded Tie-Down Rod
- 8 Threaded Coupler
- 9 Sleeve w/Cover Plate Top & Bottom
- 10 Joist Hanger
- 11 2"x Pressure Treated Ledger
- 12 Anchor Bolt
- 13 Wood Blocking
- 14 3/8" ± Mortar Bed
- 15 Wood "I" Joist
- 16 Floor Decking
- 17 Roof Truss
- 18 Truss Anchor
- 19 AERCON Interior Wall Plaster or Gypsum Board
- 20 Gypsum Board
- 21 Fill Clean-Out Block Opening with AERCON Repair Mortar



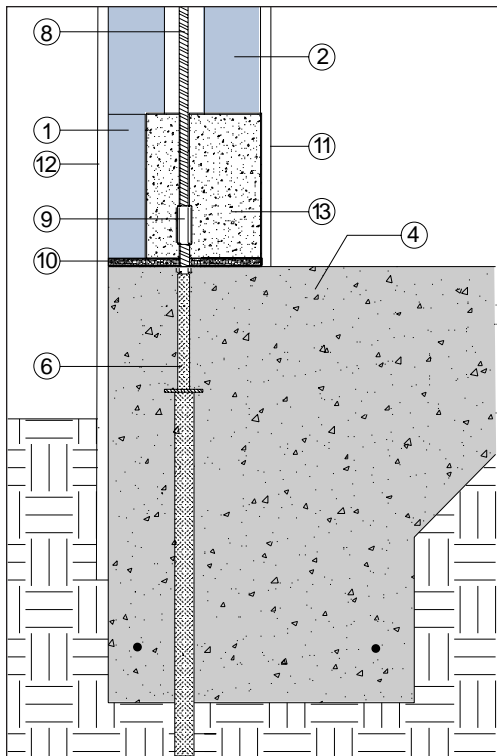
Ring Beam Detail (Perpendicular)



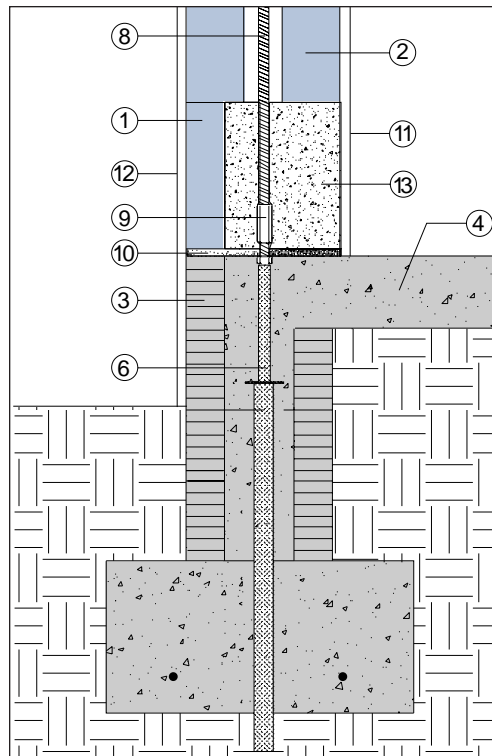
Ring Beam Detail (Parallel)



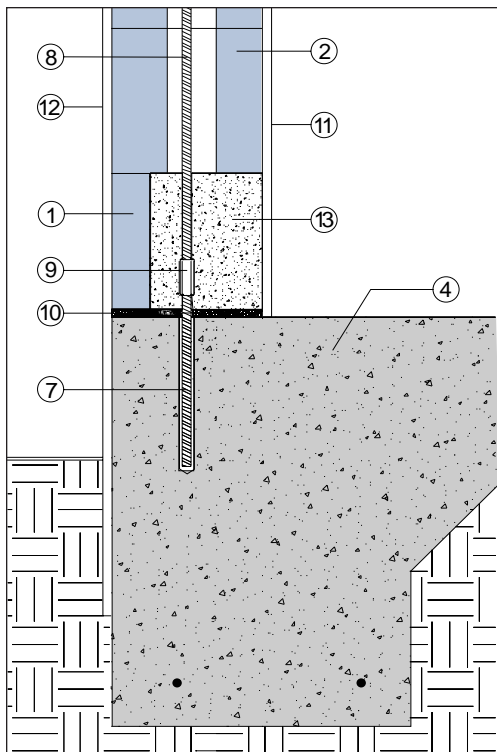
Monolithic Slab w/ Foundation Anchor



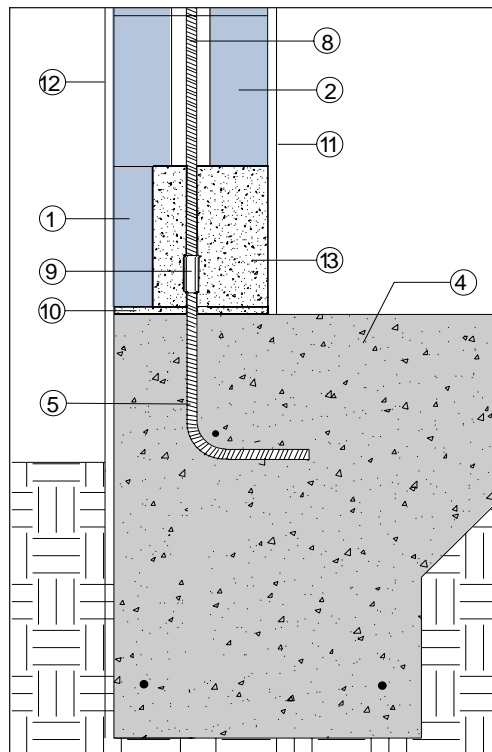
Stemwall w/ Foundation Anchor



Existing Monolithic Slab w/ Epoxied Anchor



Monolithic Slab w/ J-Bolt



## AERCON Foundation Details

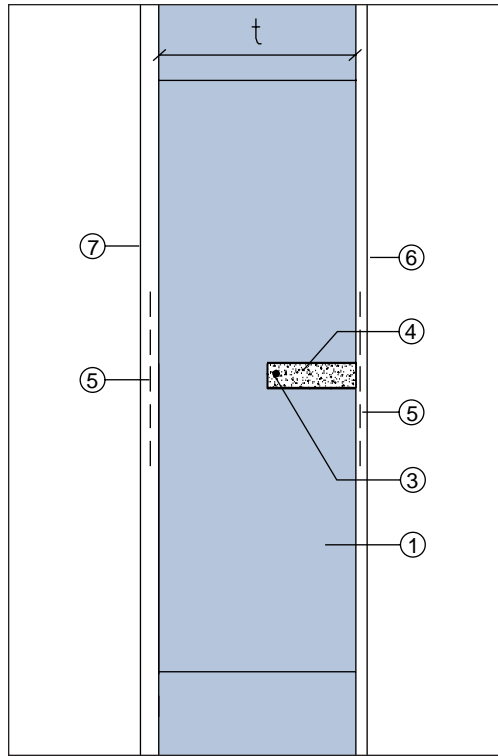
- 1** AERCON Clean-Out Block
- 2** Cored AERCON Block
- 3** CMU Stemwall
- 4** Reinforced Concrete Slab
- 5** J-Bolt Cast in Place
- 6** Foundation Anchor
- 7** Threaded Tie-Down Rod  
Epoxied into Existing  
Conc. Slab 6" min.
- 8** Threaded Tie-Down Rod
- 9** Threaded Coupler
- 10** 3/8" ± Mortar Bed
- 11** AERCON Interior Wall  
Plaster or Gypsum Board
- 12** AERCON Compatible  
Coating
- 13** Fill Clean-Out Block  
Opening with AERCON  
Repair Mortar

Note: Reinforcing bar can be used instead of threaded rod. Cores must then be grouted.

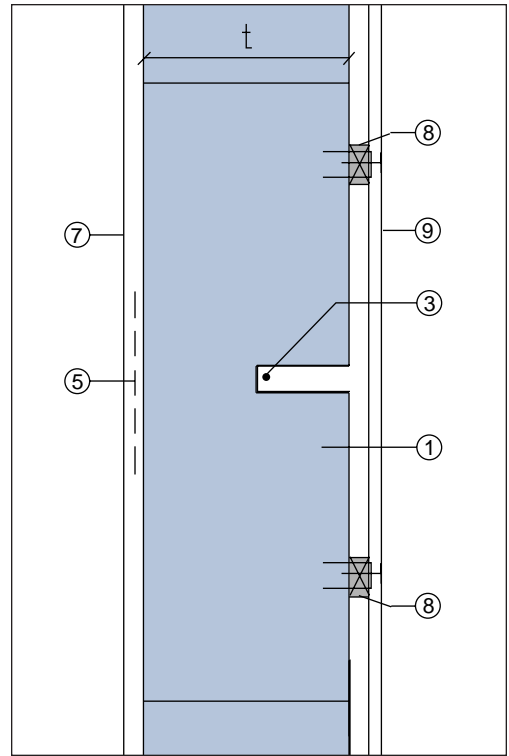
# AERCON Wall Details

- 1 AERCON Block w/3/4" x (t/2-1/2") Tie-Down Chase
- 2 Cored AERCON Block
- 3 Threaded Tie-Down Rod
- 4 AERCON Repair Mortar to Fill Chase
- 5 Mesh Placed Over Chase
- 6 AERCON Interior Wall Plaster
- 7 AERCON Compatible Coating
- 8 Pressure Treated Furring Strips
- 9 Gypsum Board
- 10 Clay or Concrete Brick Veneer

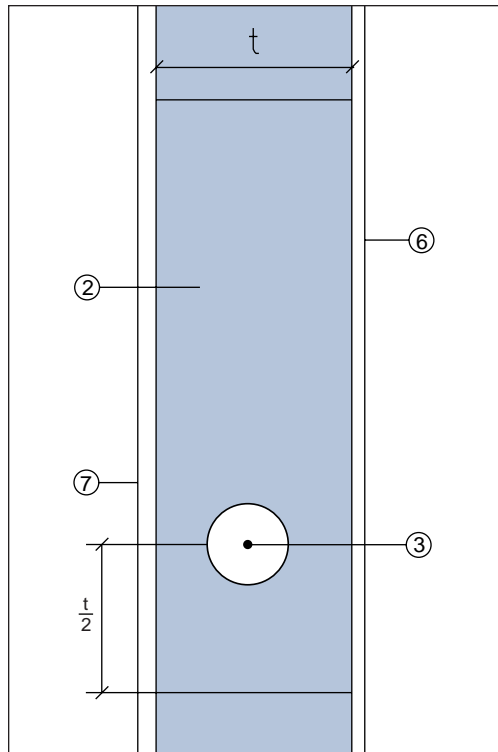
Plaster Over Chase



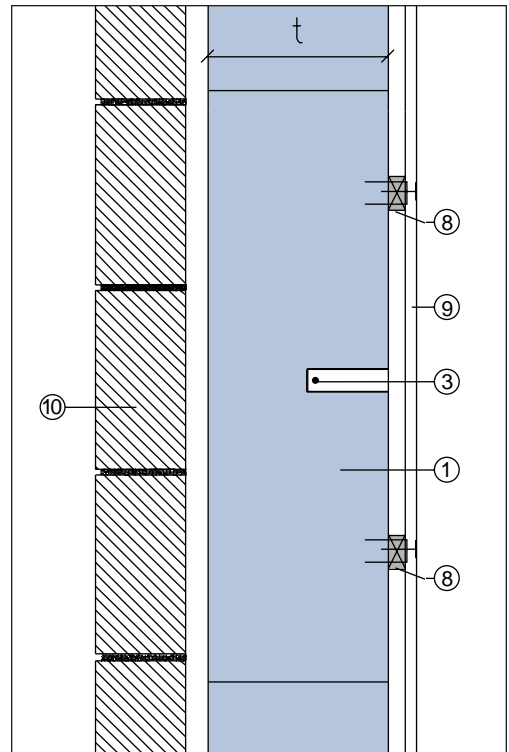
Furred Gypsum



Cored Block



Brick Veneer



Note: Reinforcing bar can be used instead of threaded rod. Cores must then be grouted.

# E. Interior Wall Partitions

## Interior Walls

Wall Partition Detail

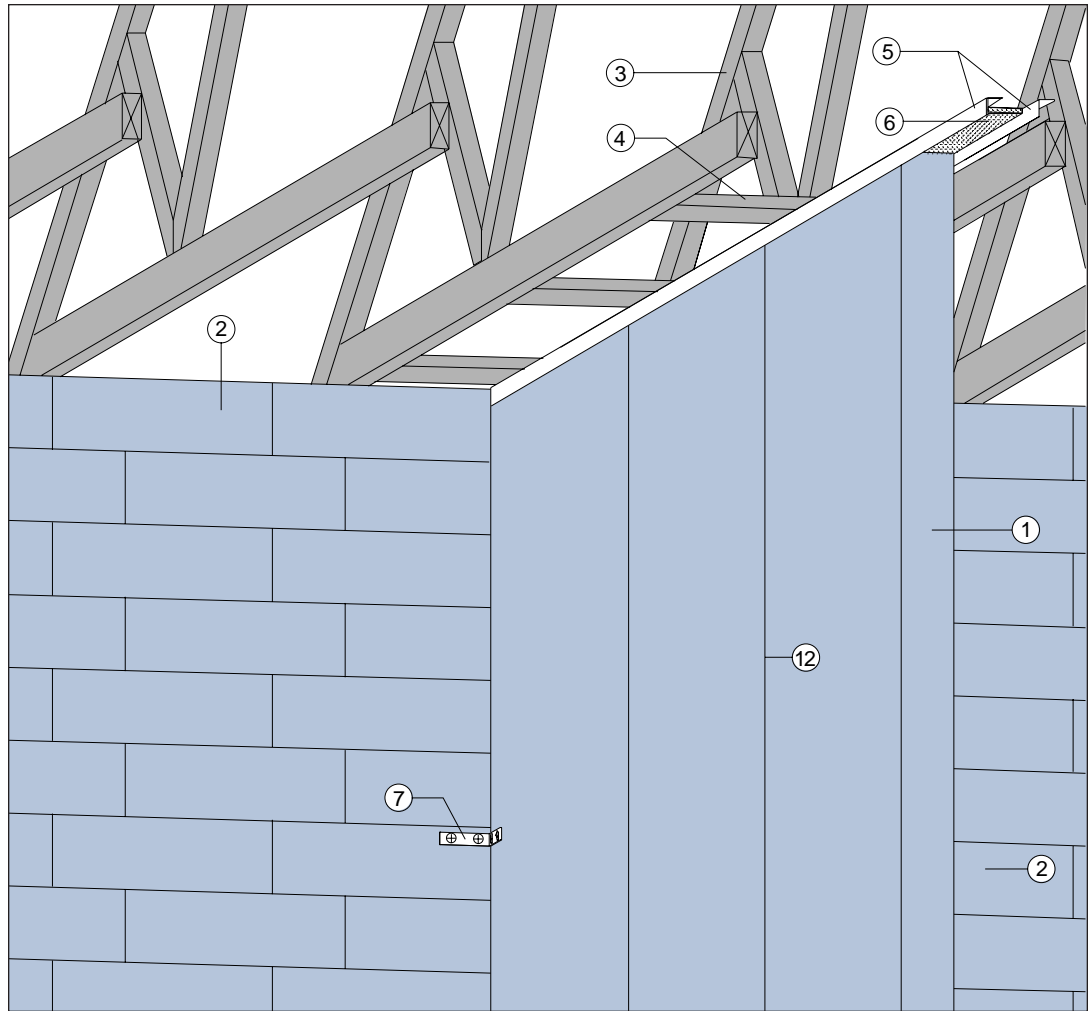
Door Lintel

Partition Joints

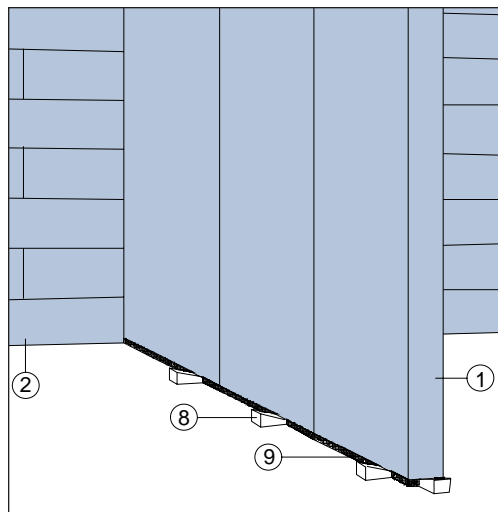
# AERCON Partitions

- ❶ AERCON Partition
- ❷ AERCON Exterior Wall
- ❸ Roof Truss
- ❹ 2"x 4" Nailer @ 24" O.C. (max.)
- ❺ Metal Corner Bead Used for Lateral Support
- ❻ 1/2" Styrofoam
- ❼ Temporary Bracket (as required)
- ❽ Temporary Wedges to Raise and Support Wall Partitions
- ❾ Drypack Mortar  
*Note: When Drypack Mortar has Cured, Remove Wedges and Fill Voids with Mortar*
- ❿ Gypsum Board
- ⓫ AERCON Interior Wall Plaster or Gypsum Board
- ⓬ Mortar Joint

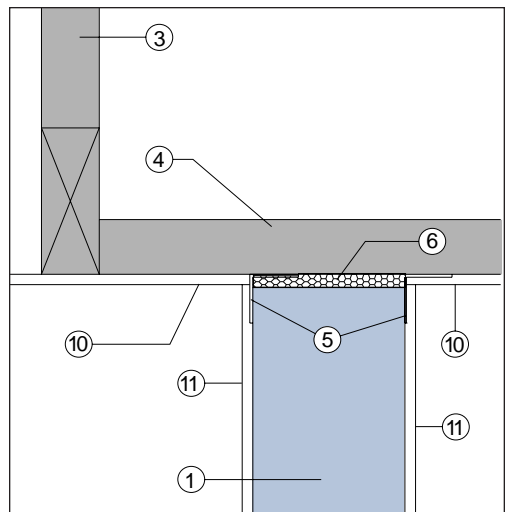
Wall Partition Detail



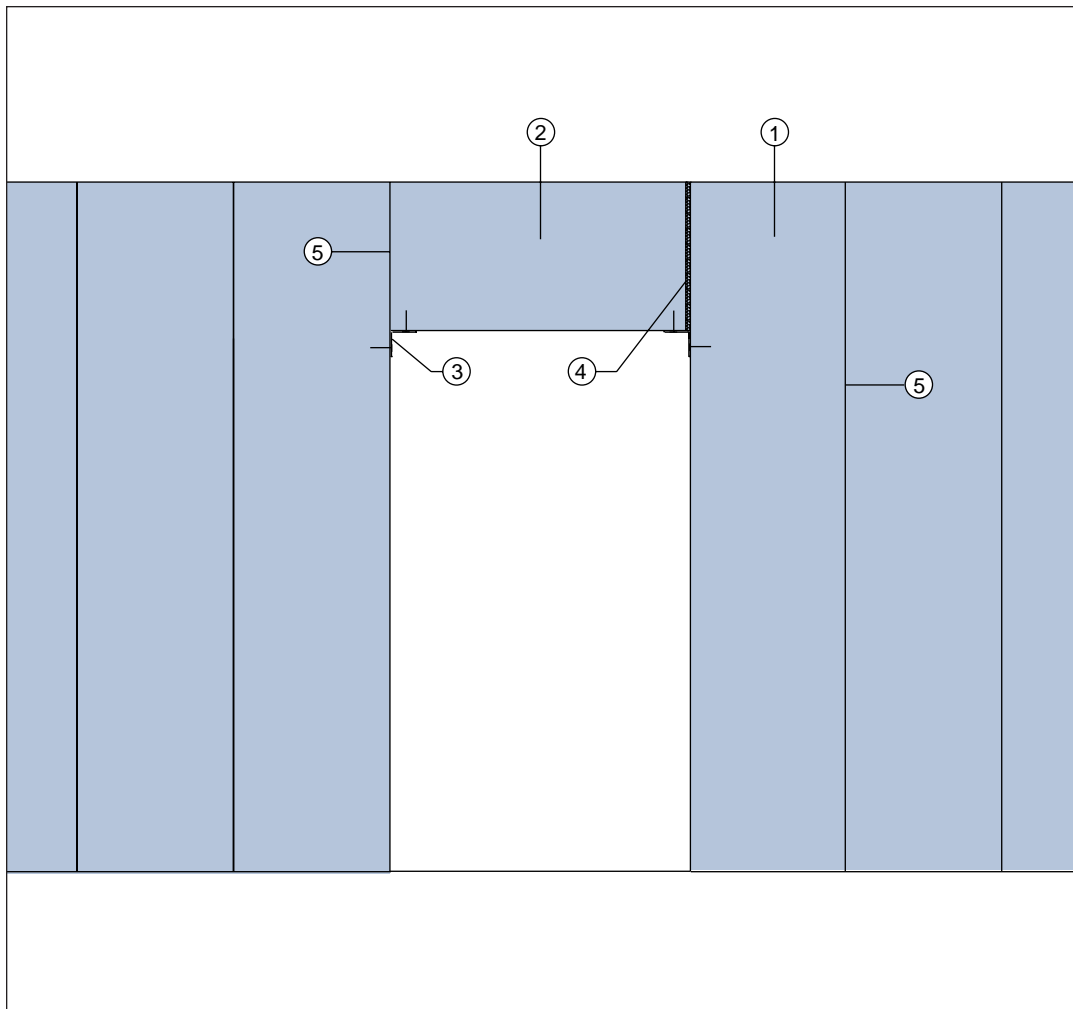
Base Detail



Section View



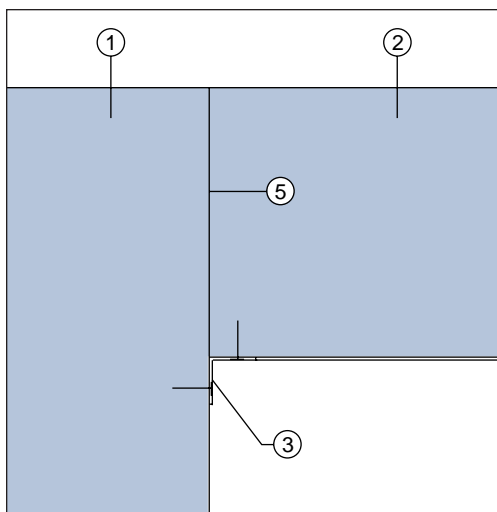
## Door Lintel



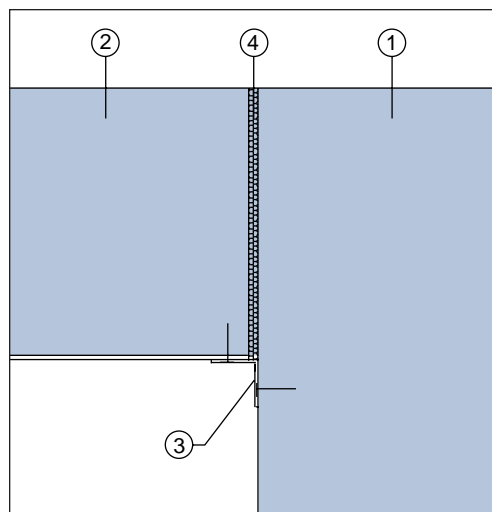
# AERCON Partitions

- 1** AERCON Partition
- 2** AERCON Lintel Partition
- 3** L-Bracket
- 4** 1/4" Wide Joint w/ Polyurethane Foam
- 5** Mortar Joint

## Lintel to Partition



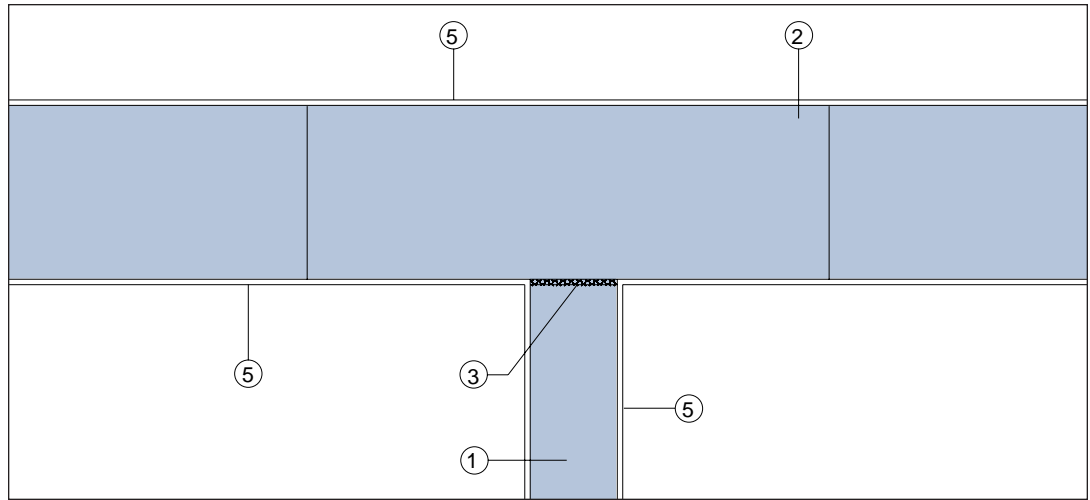
## Lintel to Partition (Expansion Joint)



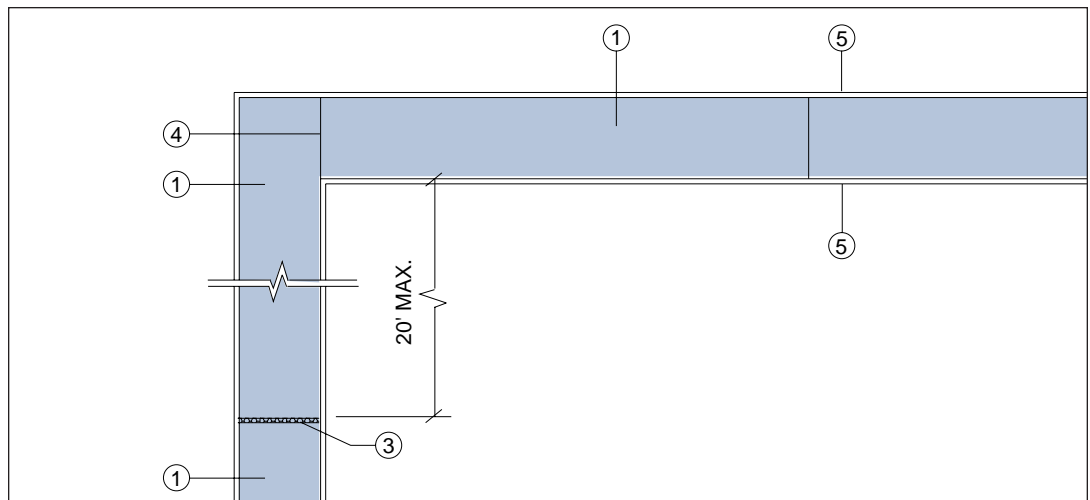
# AERCON Partitions

- 1 AERCON Partition
- 2 AERCON Interior Block Wall
- 3 1/4" Wide Joint w/ Polyurethane Foam Fill
- 4 Mortar Joint
- 5 AERCON Interior Wall Plaster or Gypsum Board

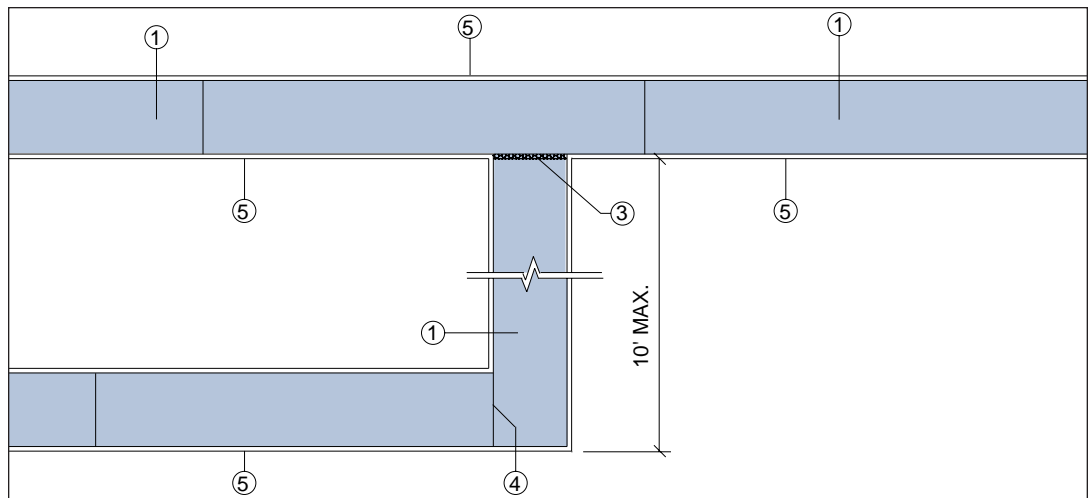
Partition to Block



Partition to Partition



Partition to Partition



# F. Electrical / Plumbing Installation

## Electrical Installation

Plaster Finish over Electrical  
Gypsum Board on Furring Strips over Electrical  
Gypsum Board over Electrical

## Plumbing Installation

Plumbing Chase

## Cabinet Section

Cabinet Section

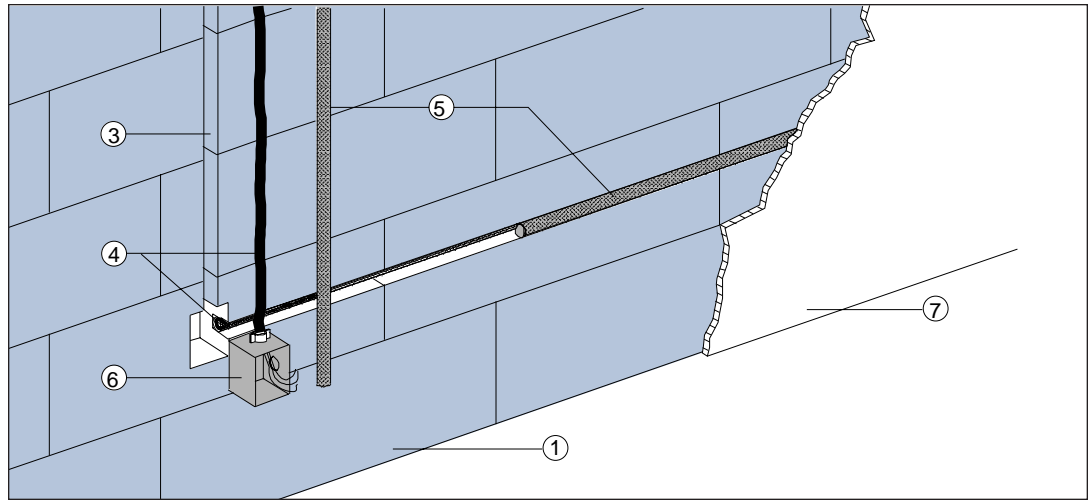
## Fastening Details

Exterior Door Jamb  
Interior Door Jamb  
Window Jamb  
Interior Trim  
Interior Framing Connection  
Garage Door Jamb

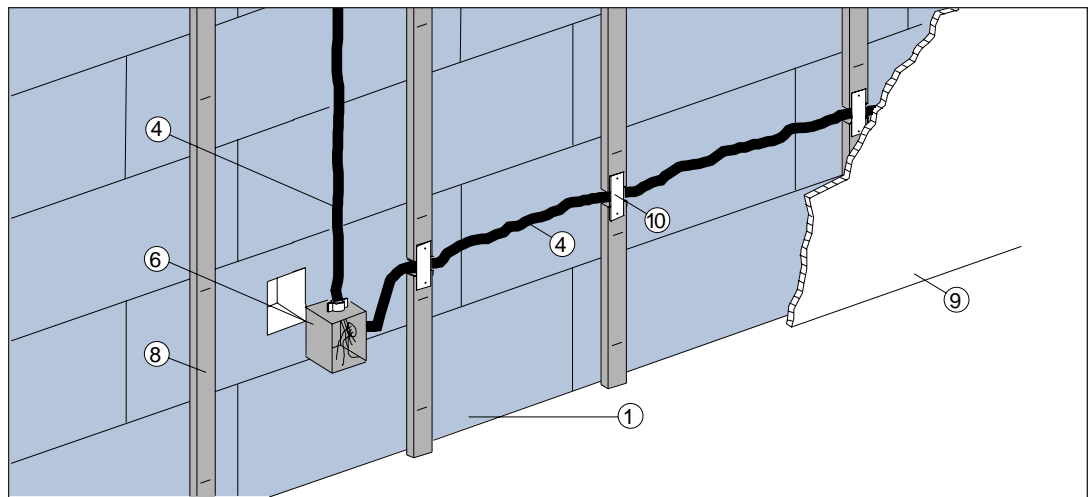
# Electrical Installation

- 1 AERCON Block Wall
- 2 AERCON Partition
- 3 1 1/2" Deep Electrical Chase
- 4 Romex Wire
- 5 Backer Rod
- 6 Electrical Outlet Box
- 7 AERCON Interior Wall Plaster
- 8 Pressure Treated Furring Strips
- 9 Gypsum Board
- 10 Metal Plates

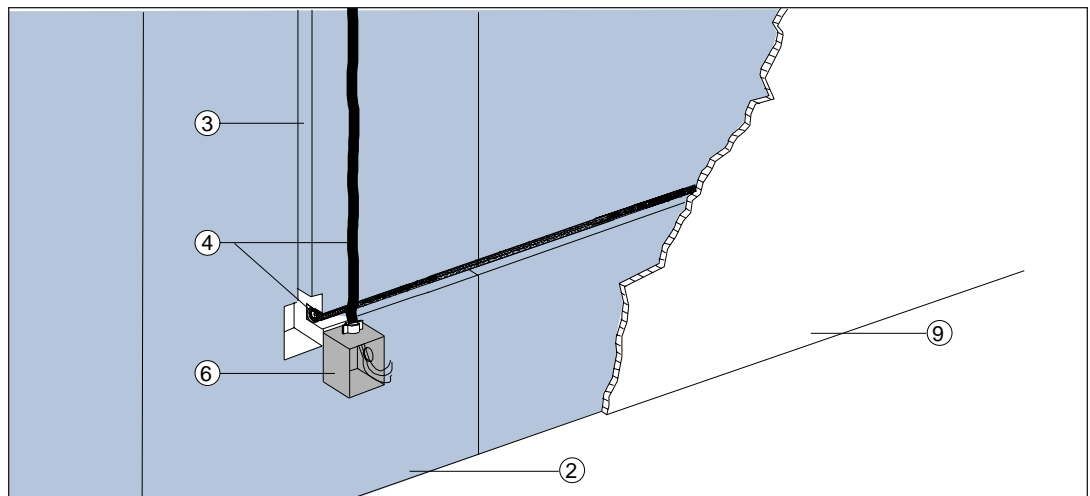
Electrical w/ Plaster



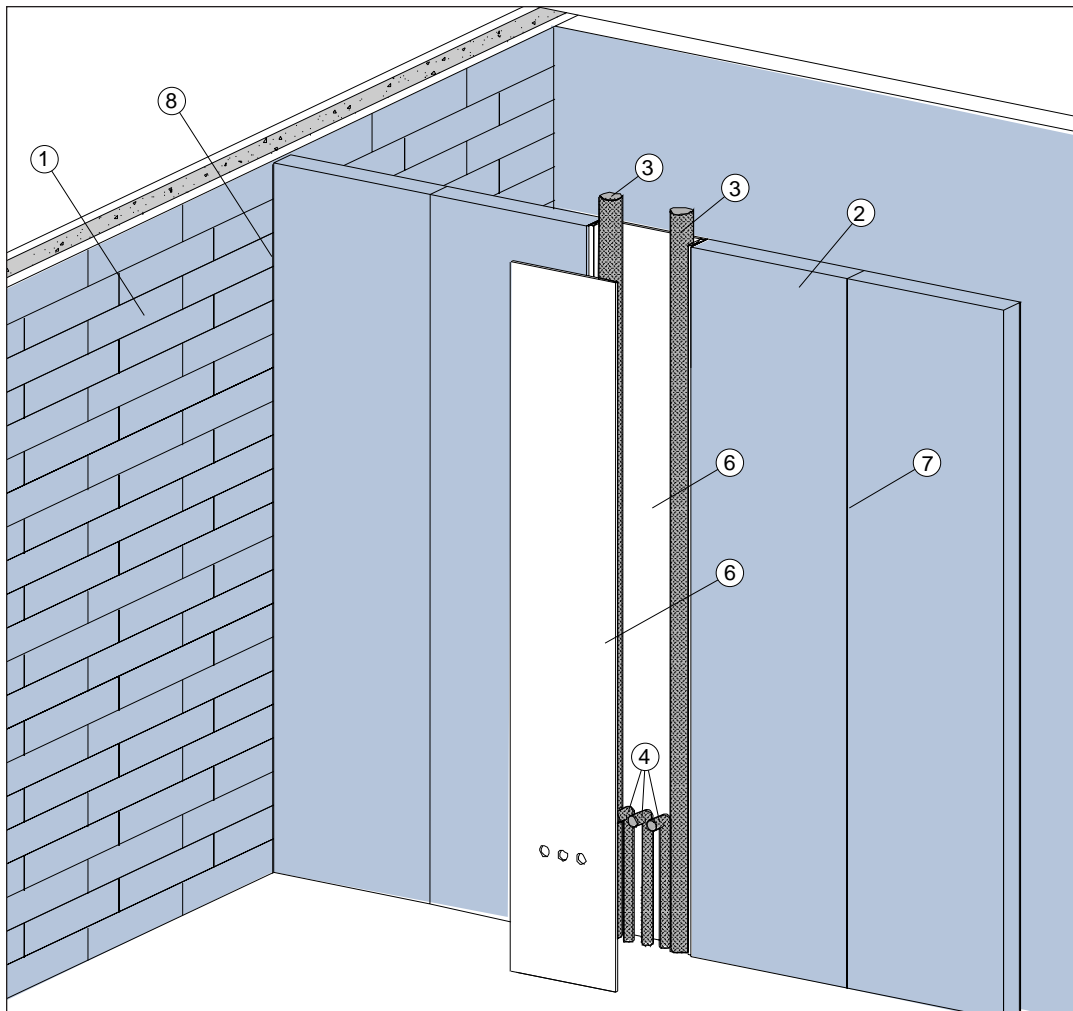
Electrical w/ Gypsum Board on Furring



Electrical w/ Gypsum Board



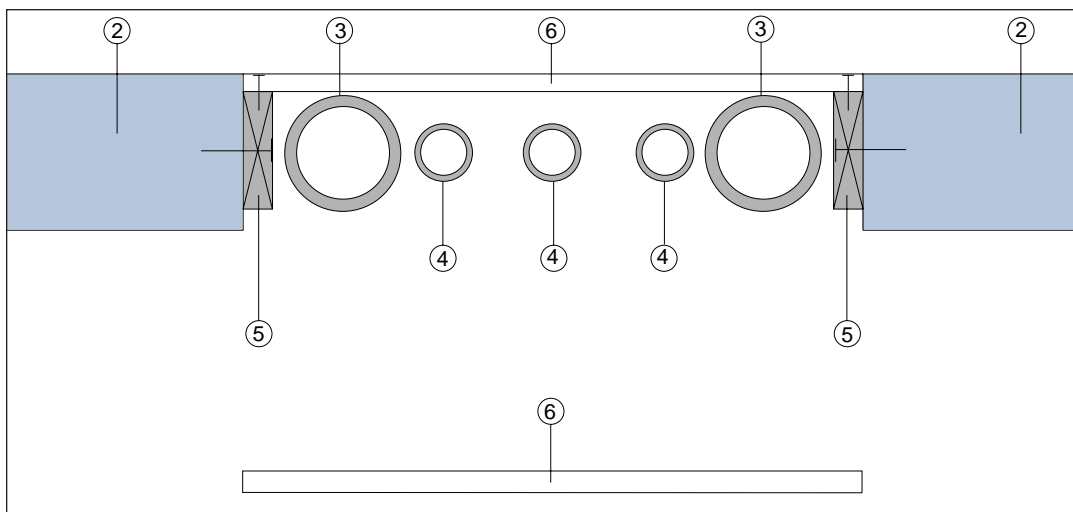
## Plumbing Chase



## Plumbing Installation

- 1** AERCON Exterior Wall
- 2** AERCON Partition
- 3** Plumbing Stack
- 4** Plumbing Supply Lines
- 5** 1"x Pressure Treated Nailers Secured w/ Permaseal Adhesive Caulk and 3" Senco (Semcote) Pneumatic Nails at 8" O.C.
- 6** Gypsum Board
- 7** Mortar Joint
- 8** Styrofoam w/ Polyurethane Foam Fill

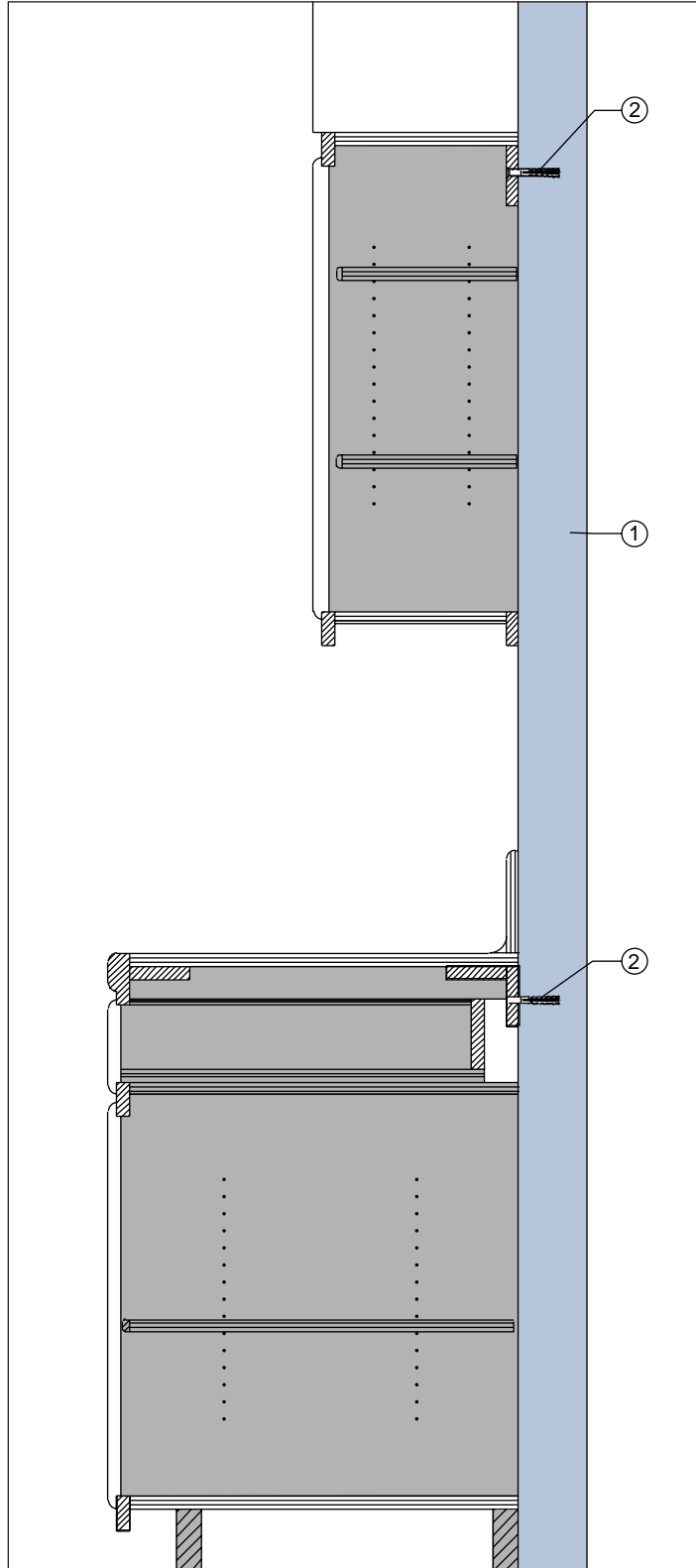
## Chase Detail



# Cabinet Installation

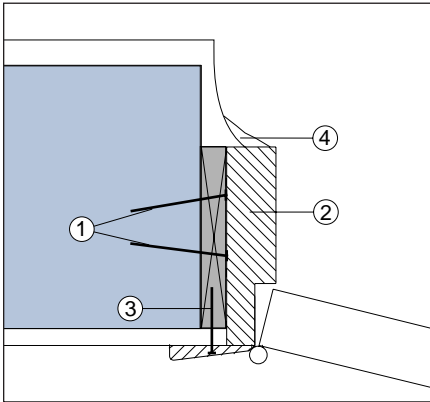
- 1 AERCON Wall
- 2 Attach Cabinet to AERCON Wall with AAC Compatible Fastener. (See Fasteners Information in the Structural Design Section.)

Cabinets



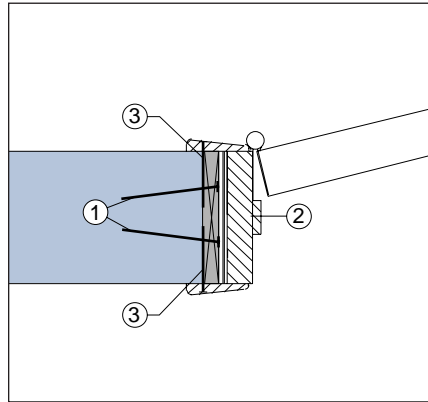
# AERCON - Fastening Details

## Exterior Door Jamb



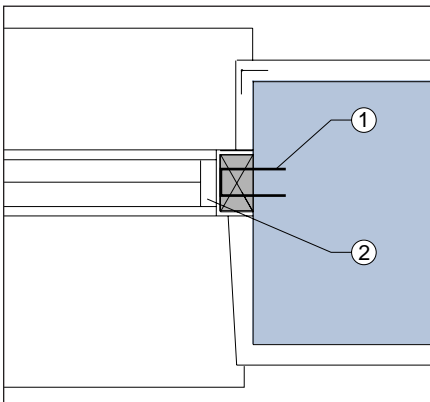
- 1 Secure Pressure Treated Buck Strip to AERCON Wall with Polyseamseal Adhesive Caulk and Senco (Semcote) Pneumatic Nails (Spacing per the Design Professional.)
- 2 Install Exterior Door Jamb per Manufacturer's Specifications.
- 3 Fasten Interior Trim with 2" Senco (Semcote) Pneumatic Finishing Nails.
- 4 Trim Out Moulding, as Necessary.

## Interior Door Jamb



- 1 Secure Pressure Treated 1/4" Plywood to AERCON Wall with Polyseamseal Adhesive Caulk and #8 Senco (Semcote) Pneumatic Nails (Spacing per the Design Professional.)
- 2 Install Interior Door Jamb per Manufacturer's Specifications.
- 3 Fasten Interior Trim with 2" Senco (Semcote) Pneumatic Finishing Nails.

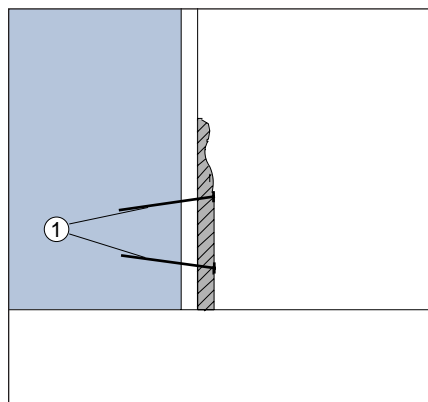
## Window Jamb



- 1 Secure Pressure Treated Buck Strip to AERCON Wall with Senco (Semcote) 2" Staples (Spacing per the Design Professional).
- 2 Install Window to Buck Strip per Manufacturer's Specifications.

*Note: Furring Strips for Gypsum Board Should be Secured per Item 1.*

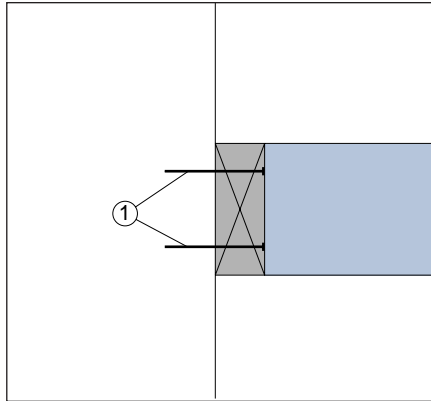
## Interior Trim



- 1 Fasten Interior Trim with 2" Senco (Semcote) Pneumatic Finishing Nails.

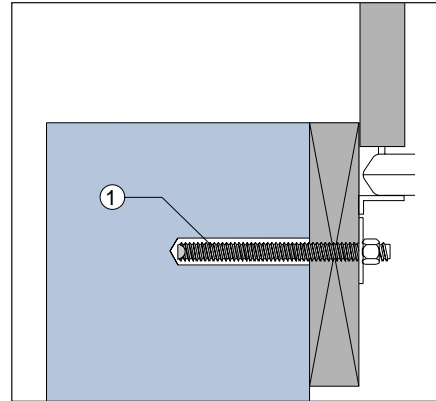
# AERCON Fastening Details

### Interior Framing Connection



- 1 Secure Wood Framing to AERCON Wall with Polyseamseal Adhesive Caulk and #8 Senco (Semcote) Pneumatic Nails at 16" O.C. and Staggered. See Contract Documents for Anchor Size and Spacing for Exterior Connections.

### Garage Door Jamb



- 1 Secure Pressure Treated 2x6 Jamb for Garage Door using Threaded Rod Epoxied into AERCON Wall. See Contract Documents for Anchor Size and Spacing.

*Note: Thru Bolts May be Used as an Alternative Method of Securing Jamb.*